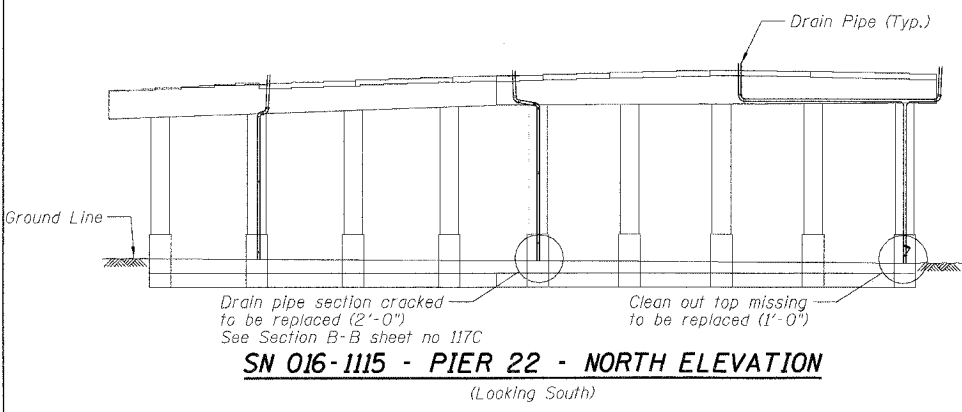
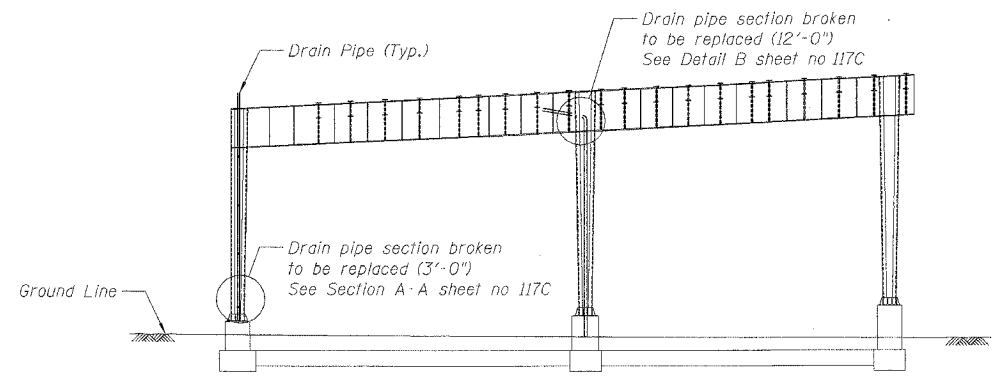


F.A.I.	SECTION	COUNTY	TOTAL SHEETS	SHEET NO.
94/90	2005-086 I	COOK	228	115
STA.	TO STA.			
FED. ROAD DIST. NO.	ILLINOIS	FED. AID PROJECT		

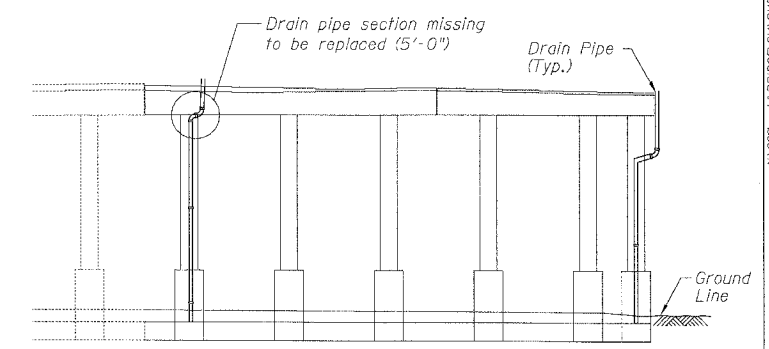
60B07



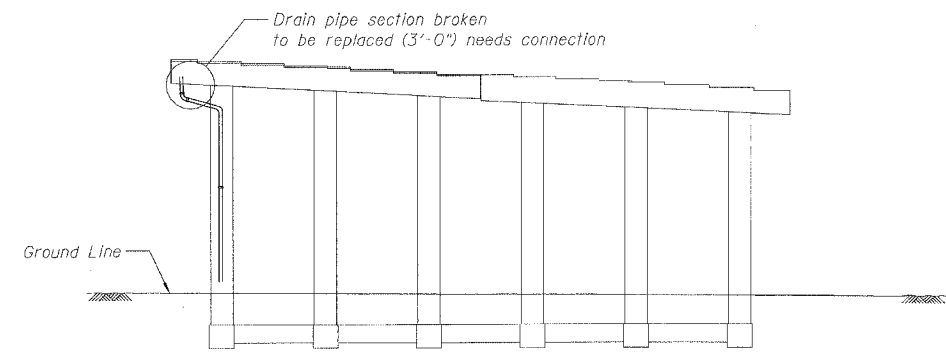
SN 016-1115 - PIER 22 - NORTH ELEVATION
(Looking South)



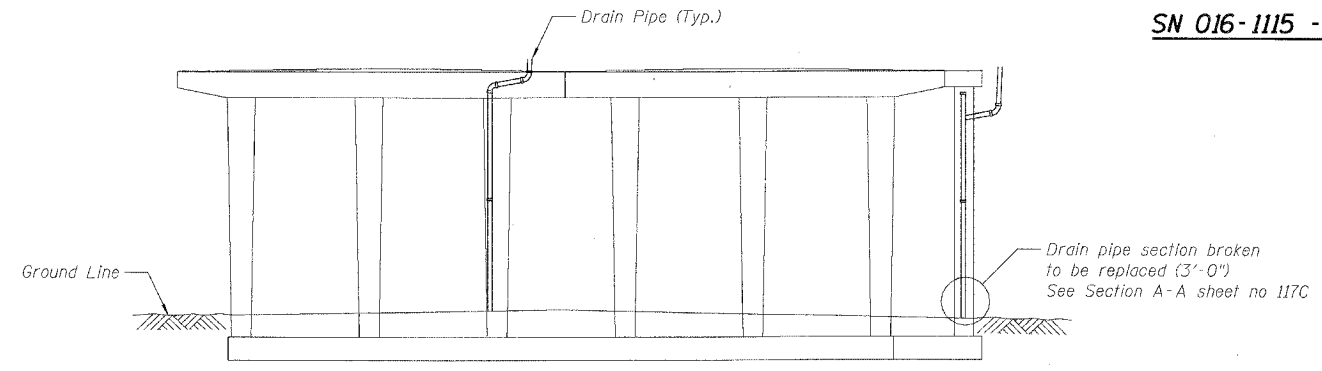
SN 016-1115 - PIER 11 - NORTH ELEVATION
(Looking South)



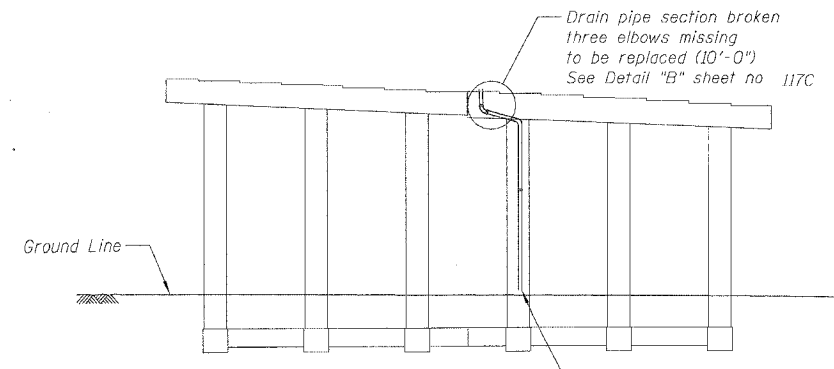
SN 016-1115 - PIER 1 - NORTH ELEVATION
(Looking South)



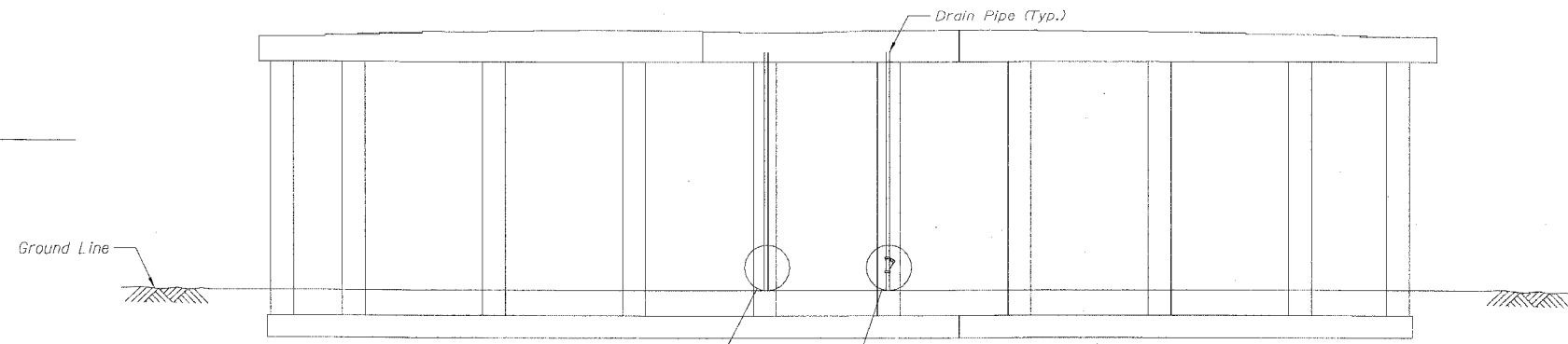
SN 016-1115 - PIER 20 - SOUTH ELEVATION
(Looking North)



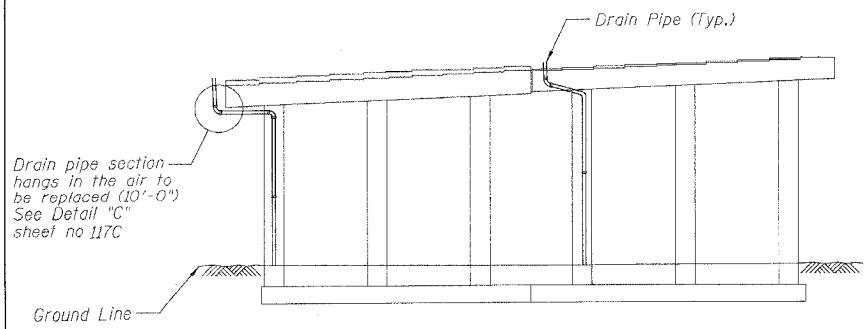
SN 016-1115 - PIER 6 - SOUTH ELEVATION
(Looking North)



SN 016-1115 - PIER 18 - SOUTH ELEVATION
(Looking North)



SN 016-1115 - PIER 4 - SOUTH ELEVATION
(Looking North)



SN 016-1115 - PIER 15 - NORTH ELEVATION
(Looking South)

Notes:

1. See Drainage Repair Notes on sheet 111
2. For pier locations see General Plan & Elevation Sheets.
3. SN 016-1116, Span 2
Drain pipe cleanout cap missing along the north face to be replaced (1'-0")

BILL OF MATERIAL

ITEM DESCRIPTION	UNIT	QUANTITY
Bridge Drainage System Repairs	FOOT	56

REVISIONS	
NAME	DATE

ILLINOIS DEPARTMENT OF TRANSPORTATION
F.A.I. 94/90 (DAN RYAN EXPRESSWAY)
DAN RYAN ELEVATED BRIDGE
BEARING REPLACEMENT & STEEL REPAIR
DRAINAGE REPAIRS
SN 016-1115

SCALE: NTS
DATE: 3/1/2008

DRAWN BY: LAM
CHECKED BY: BLU

BOWMAN, BARRETT & ASSOCIATES INC.
CONSULTING ENGINEERS
Chicago, Illinois
312.228.0100
www.bbancinc.com

3/21/2008 8:41:53 AM