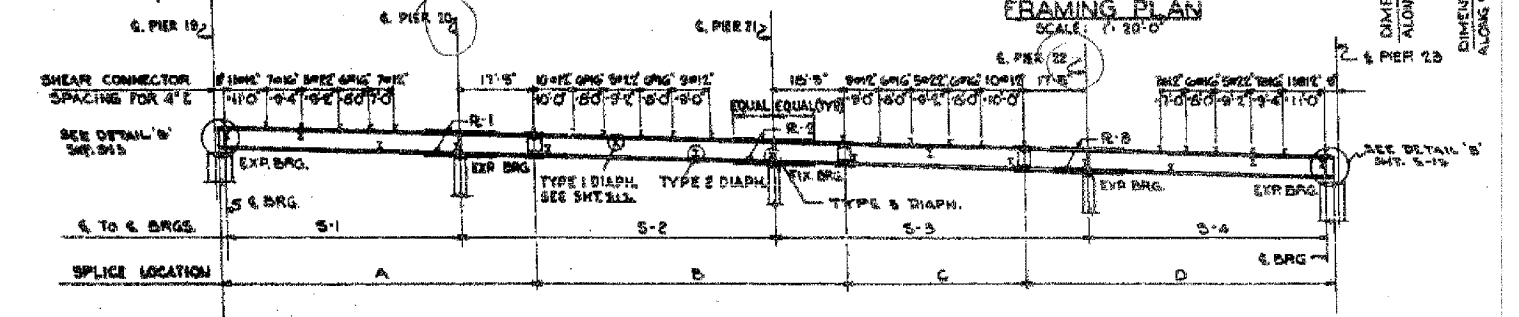
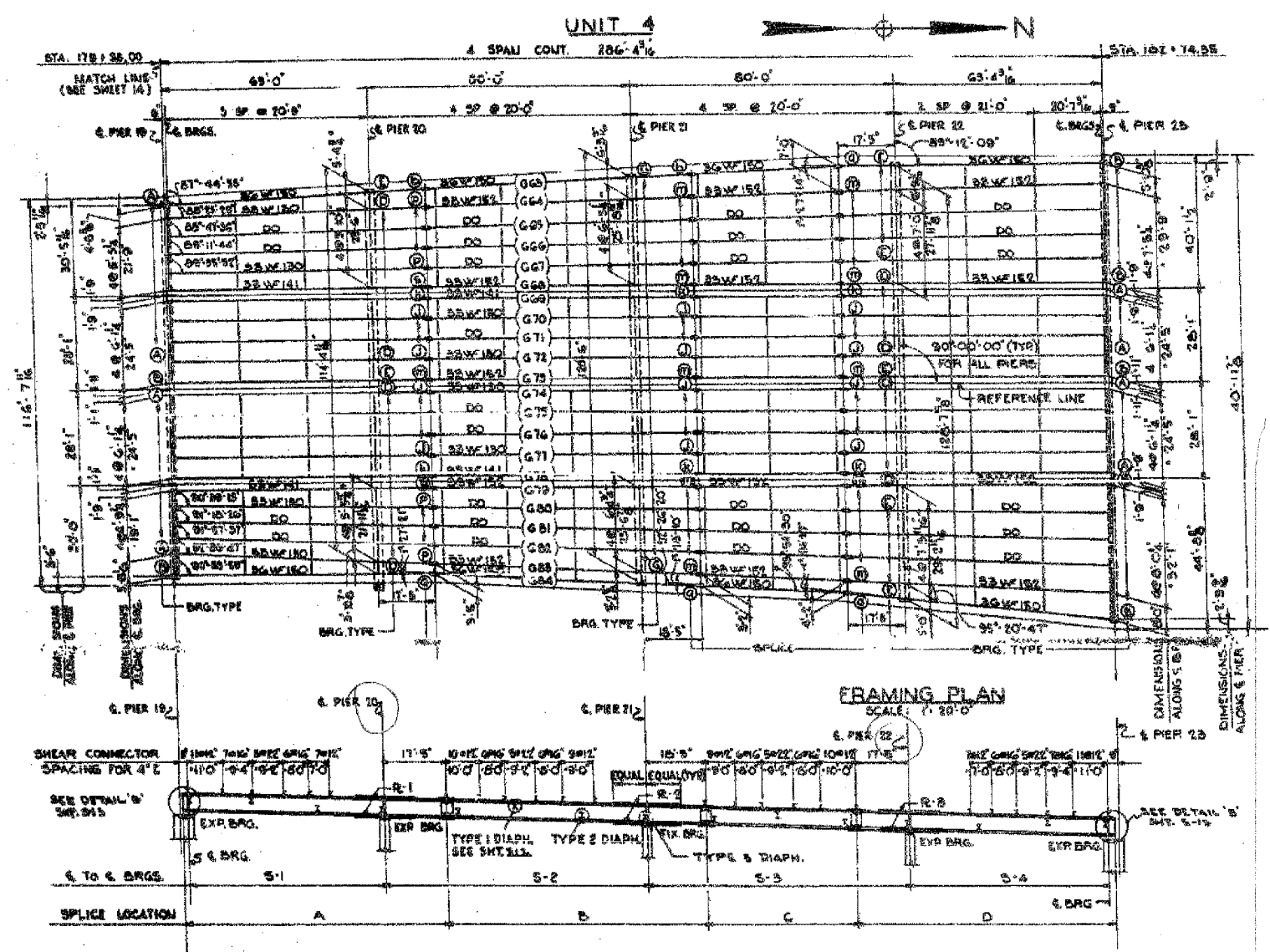


60B07



GIRDER	A	B	C	D	5-1	5-2	5-3	5-4	COVER #1	COVER #2	COVER #3
G4	80'-2"	81'-0"	44'-2"	80'-6"	62'-3"	80'-0"	80'-0"	62'-7"	10'-2"	10'-2"	10'-2"
G5	80'-2"	81'-0"	44'-2"	80'-6"	62'-3"	80'-0"	80'-0"	62'-7"	10'-2"	10'-2"	10'-2"
G6	80'-2"	81'-0"	44'-2"	80'-6"	62'-3"	80'-0"	80'-0"	62'-7"	10'-2"	10'-2"	10'-2"
G7	80'-2"	81'-0"	44'-2"	80'-6"	62'-3"	80'-0"	80'-0"	62'-7"	10'-2"	10'-2"	10'-2"
G8	80'-2"	81'-0"	44'-2"	80'-6"	62'-3"	80'-0"	80'-0"	62'-7"	10'-2"	10'-2"	10'-2"
G9, 78	80'-2"	81'-0"	44'-2"	80'-6"	62'-3"	80'-0"	80'-0"	62'-7"	10'-2"	10'-2"	10'-2"
10, 11, 15, 16, 17	80'-2"	81'-0"	44'-2"	80'-6"	62'-3"	80'-0"	80'-0"	62'-7"	10'-2"	10'-2"	10'-2"
75	80'-2"	81'-0"	44'-2"	80'-6"	62'-3"	80'-0"	80'-0"	62'-7"	10'-2"	10'-2"	10'-2"
74	80'-2"	81'-0"	44'-2"	80'-6"	62'-3"	80'-0"	80'-0"	62'-7"	10'-2"	10'-2"	10'-2"
19	80'-2"	81'-0"	44'-2"	80'-6"	62'-3"	80'-0"	80'-0"	62'-7"	10'-2"	10'-2"	10'-2"
80	80'-2"	81'-0"	44'-2"	80'-6"	62'-3"	80'-0"	80'-0"	62'-7"	10'-2"	10'-2"	10'-2"
81	80'-2"	81'-0"	44'-2"	80'-6"	62'-3"	80'-0"	80'-0"	62'-7"	10'-2"	10'-2"	10'-2"
82	80'-2"	81'-0"	44'-2"	80'-6"	62'-3"	80'-0"	80'-0"	62'-7"	10'-2"	10'-2"	10'-2"
83	80'-2"	81'-0"	44'-2"	80'-6"	62'-3"	80'-0"	80'-0"	62'-7"	10'-2"	10'-2"	10'-2"
84	80'-2"	81'-0"	44'-2"	80'-6"	62'-3"	80'-0"	80'-0"	62'-7"	10'-2"	10'-2"	10'-2"

NOTE: ALL DIMENSIONS ARE IN THE HORIZONTAL PLANE AND ALONG THE C OF THE GIRDER WEB. DIMENSIONS MARKED THIS (O) ARE NOT STRAIGHT LINES BETWEEN BEARINGS.

TABLE OF FILL PLATES AT BEARINGS

UNIT 1							
LOCATION	G4	G5	G6	G7	G10	G16	G17
PIER 7	-	-	14'-2" x 11'-0"	14'-2" x 11'-0"	-	14'-2" x 11'-0"	14'-2" x 11'-0"
PIER 8	-	-	9'-2" x 9'-0"	9'-2" x 9'-0"	-	9'-2" x 9'-0"	9'-2" x 9'-0"
PIER 9	-	-	11'-2" x 8'-0"	11'-2" x 8'-0"	11'-2" x 8'-0"	11'-2" x 8'-0"	-
PIER 10	9'-2" x 9'-0"	9'-2" x 9'-0"	9'-2" x 9'-0"	9'-2" x 9'-0"	9'-2" x 9'-0"	9'-2" x 9'-0"	-
PIER 11	G1	G2	G3	G4	G5	G6	G7
	14'-2" x 11'-0"	14'-2" x 11'-0"	14'-2" x 11'-0"	14'-2" x 11'-0"	14'-2" x 11'-0"	14'-2" x 11'-0"	14'-2" x 11'-0"
	G9	G10	G11	G12	G13	G14	G15
	14'-2" x 11'-0"	14'-2" x 11'-0"	14'-2" x 11'-0"	14'-2" x 11'-0"	14'-2" x 11'-0"	14'-2" x 11'-0"	14'-2" x 11'-0"
	G17	G18	G19	G20	G21	G22	-
	14'-2" x 11'-0"	14'-2" x 11'-0"	14'-2" x 11'-0"	14'-2" x 11'-0"	14'-2" x 11'-0"	14'-2" x 11'-0"	-

UNIT 2						
LOCATION	G23	G25	G29	G30	G37	G42
PIER 11	-	14'-2" x 11'-0"	14'-2" x 11'-0"	14'-2" x 11'-0"	14'-2" x 11'-0"	-
PIER 12	-	9'-2" x 9'-0"	9'-2" x 9'-0"	9'-2" x 9'-0"	9'-2" x 9'-0"	-
PIER 14	-	9'-2" x 9'-0"	9'-2" x 9'-0"	9'-2" x 9'-0"	9'-2" x 9'-0"	-
PIER 15	14'-2" x 11'-0"	14'-2" x 11'-0"	14'-2" x 11'-0"	14'-2" x 11'-0"	14'-2" x 11'-0"	-

UNIT 3						
LOCATION	G45	G48	G55	G56	G57	G58
PIER 15	-	-	14'-2" x 11'-0"	14'-2" x 11'-0"	14'-2" x 11'-0"	14'-2" x 11'-0"
PIER 16	-	-	-	11'-2" x 8'-0"	11'-2" x 8'-0"	-
PIER 17	11'-2" x 8'-0"	11'-2" x 8'-0"	-	-	-	-
PIER 18	-	-	-	11'-2" x 8'-0"	11'-2" x 8'-0"	-
PIER 19	-	-	14'-2" x 11'-0"	14'-2" x 11'-0"	14'-2" x 11'-0"	14'-2" x 11'-0"

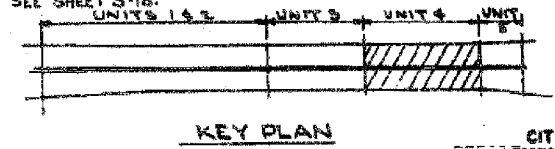
UNIT 4						
LOCATION	G67	G68	G70	G75	G77	G78
PIER 19	14'-2" x 11'-0"	-	14'-2" x 11'-0"	14'-2" x 11'-0"	14'-2" x 11'-0"	14'-2" x 11'-0"
PIER 20	-	9'-2" x 9'-0"	-	-	9'-2" x 9'-0"	-
PIER 21	-	-	-	-	11'-2" x 8'-0"	-
PIER 22	11'-2" x 8'-0"	9'-2" x 9'-0"	-	-	-	9'-2" x 9'-0"
PIER 23	G68	G70	G71	G75	G76	G77
	14'-2" x 11'-0"	14'-2" x 11'-0"	14'-2" x 11'-0"	14'-2" x 11'-0"	14'-2" x 11'-0"	14'-2" x 11'-0"

TOTAL WEIGHT OF FILL PLATES = 2,685 POUNDS.

TABLE OF BEVELS OF SOLE PLATES

	UNIT #1	UNIT #2	UNIT #3	UNIT #4
	PIER 7	PIER 11	PIER 15	PIER 19
G1 TO G22	7/8"	3/4"	-	-
G23 TO G42	-	-	5/8"	3/4"
G45 TO G62	-	-	-	1/2"
G64 TO G66	-	-	-	1/2"
G65 TO G84	-	-	-	1/2"

NOTE: FOR BEARINGS SEE SHEETS 60B09 & 60B10. FOR LOCATION OF BEVELS SEE SHEETS 5-18.



BILL OF MATERIAL

ITEM	UNIT	QUANTITY
GIRDERS	POUND	988,205
DIAPHRAGMS	POUND	78,465
FILL PLATES	POUND	2,685

ASTM TYPE A7
INCLUDED IN WEIGHT ON SHEET 512.

CITY OF CHICAGO
DEPARTMENT OF PUBLIC WORKS
BUREAU OF ENGINEERING
SOUTH ROUTE SUPERHIGHWAY
ELEVATED HIGHWAY
W. 15 TH ST. TO W. MAXWELL ST.
SECTION 2-888.3-1H

STEEL FRAMING PLAN
UNIT 4

DE LEUW, CATHEN & COMPANY
CONSULTING ENGINEERS
SCALE: AS NOTED
SHEET 515 OF 64 SHEETS

Sheet 515 of 64

REVISIONS	NAME	DATE

ILLINOIS DEPARTMENT OF TRANSPORTATION
F.A.I. 94/90 (DAN RYAN EXPRESSWAY)
DAN RYAN ELEVATED BRIDGE
BEARING REPLACEMENT & STEEL REPAIR
EXISTING PLAN INFORMATION
SN 016-0137

SCALE: NTS
DATE: 5/18/2007
DRAWN BY: LAM
CHECKED BY: BLU

BOWMAN, BARRETT & ASSOCIATES INC.
CONSULTING ENGINEERS
Chicago, Illinois
312.228.0100
www.bbainc.com

FOR INFORMATION ONLY