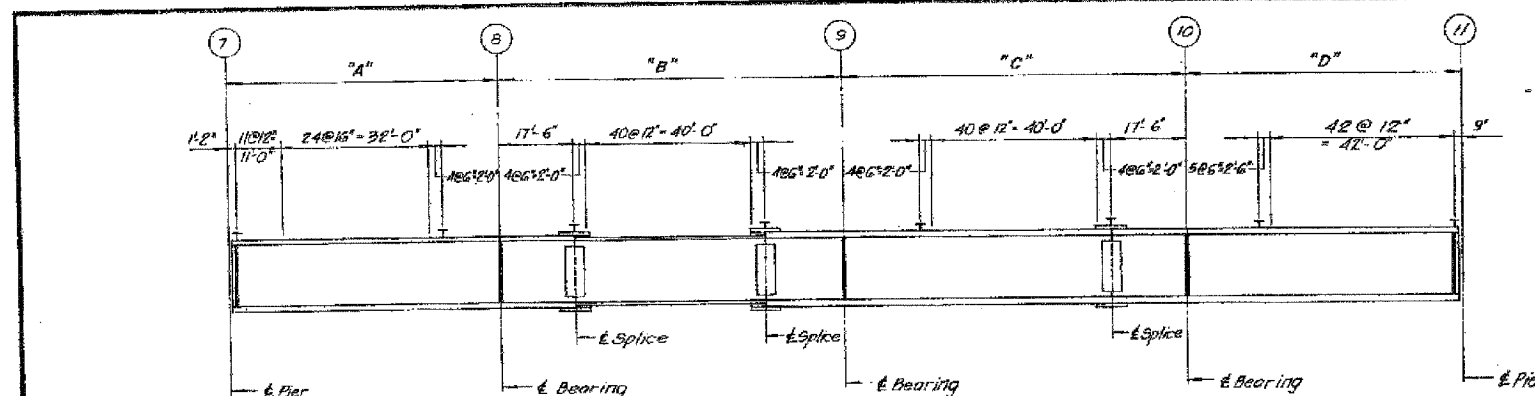


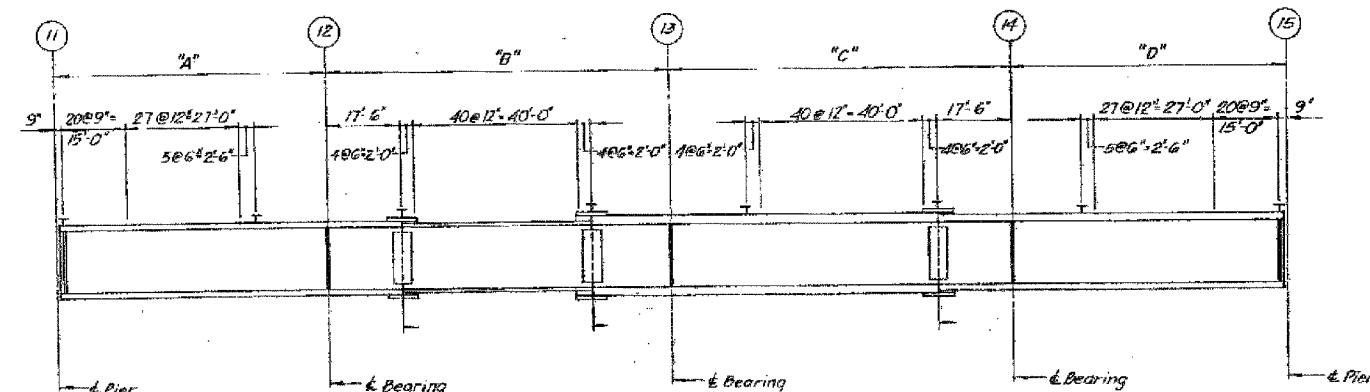
F.A.I.	SECTION	COUNTY	TOTAL SHEETS	SHEET NO.
94/90	2005-086 I	COOK	228	132
STA.	TO STA.			
FED. ROAD DIST. NO.	ILLINOIS	FED. AID PROJECT		

60B07

PROJECT NO.	SECTION	COUNTY	TOTAL SHEETS	SHEET NO.
90/94	"	COOK	60	25
STA.	TO STA.			
FED. ROAD DIST. NO.	ILLINOIS	FED. AID PROJECT		

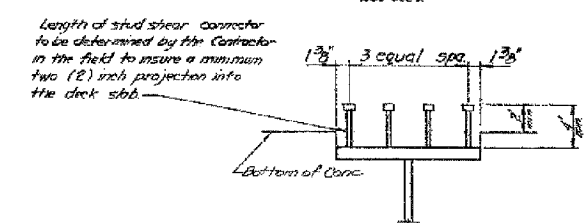


GIRDERS 61 THRU 611 ELEVATION - UNIT 1



GIRDERS 623 THRU 632 ELEVATION - UNIT 2

GIRDER	"A"	"B"	"C"	"D"
61	63'-1 1/2"	80'-0 3/4"	80'-0 1/4"	63'-0"
62	63'-0 1/2"	80'-0 1/2"	80'-0 1/8"	63'-0 1/2"
63	63'-0 1/2"	80'-0 1/2"	80'-0 1/4"	63'-0 1/2"
64	63'-0"	80'-0 1/2"	80'-0 1/2"	63'-0"
65, 66, 67	63'-0"	80'-0"	80'-0"	63'-0"
68, 69	63'-0"	80'-0"	80'-0"	63'-0"
610, 611	63'-0"	80'-0"	80'-0"	63'-0"
623, 624	63'-0"	80'-0"	80'-0"	63'-0"
625, 626, 627				
628, 629, 630				
631, 632	63'-0"	80'-0"	80'-0"	63'-0"



TYPICAL DETAIL OF SHEAR CONNECTORS

Note:
Shear Connector locations of flange splice plates to be adjusted by installer to miss splice bolts.

SHEET A25 OF A25

REVISIONS	
Name	Date

STATE OF ILLINOIS
DEPARTMENT OF TRANSPORTATION
F.A.I. ROUTE 90/94 (DAN RYAN EXPRESSWAY)
SECTION 1985-082 R - COOK COUNTY
S.B. MAINLINE RECONSTRUCTION
STRUCTURE 016-0137
EXISTING GIRDER SHEAR CONNECTOR SPACING
Scale: NONE
Date: AUG 14, 1987
Checked By: M.E.M.
ENVIRONMENTAL ENGINEERS INC.
Chicago, Illinois

FOR INFORMATION ONLY

BOWMAN, BARRETT & ASSOCIATES INC.
CONSULTING ENGINEERS
Chicago, Illinois
312.228.0100
www.bbainc.com

REVISIONS	
NAME	DATE

ILLINOIS DEPARTMENT OF TRANSPORTATION
F.A.I. 94/90 (DAN RYAN EXPRESSWAY)
DAN RYAN ELEVATED BRIDGE
BEARING REPLACEMENT & STEEL REPAIR
EXISTING PLAN INFORMATION
SN 016-0137
SCALE: NTS
DATE: 5/18/2007
DRAWN BY: LAM
CHECKED BY: BLU

5/24/2007 5:46:45 PM