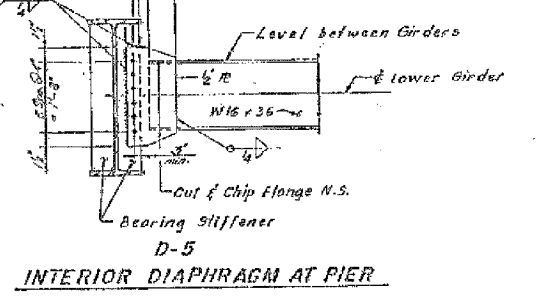
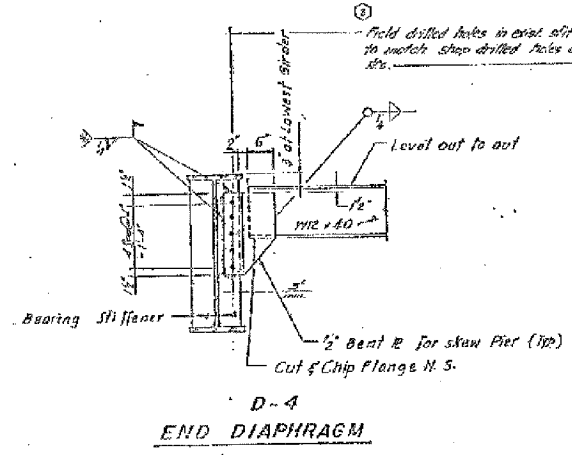
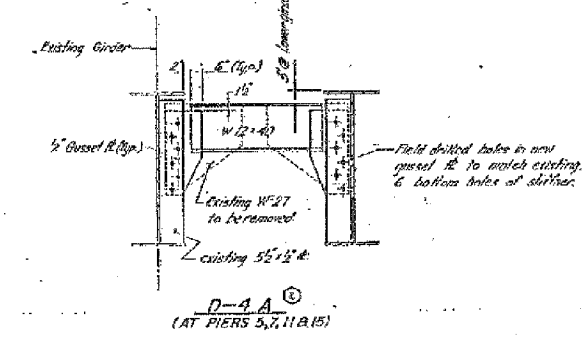
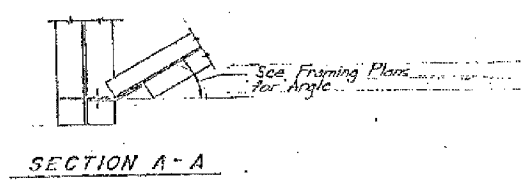
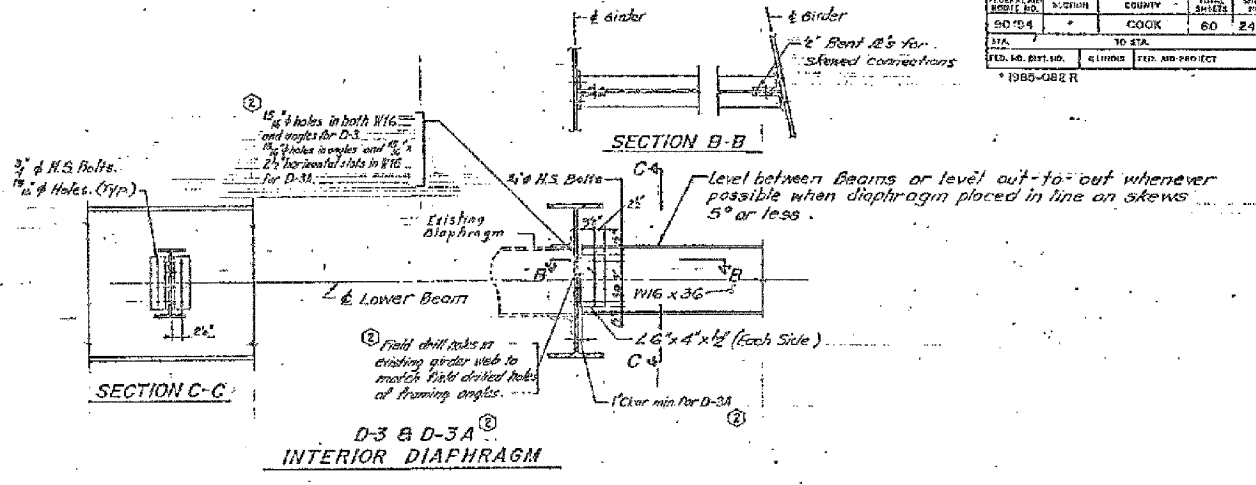
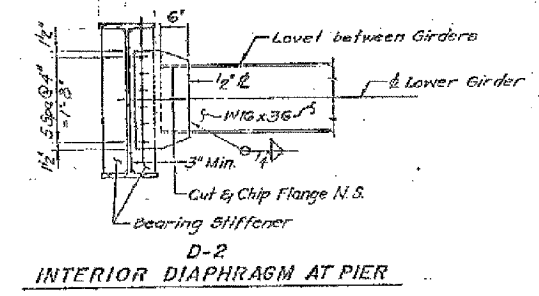
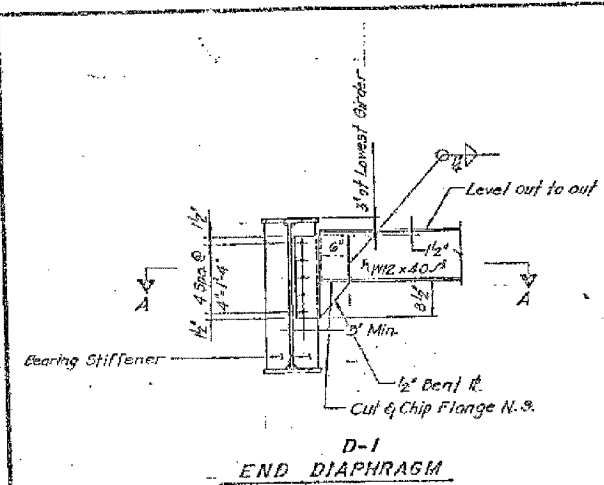


F.A.I.	SECTION	COUNTY	TOTAL SHEETS	SHEET NO.
94/90	2005-086 I	COOK	228	134
STA.	TO STA.			
FED. ROAD DIST. NO.	ILLINOIS	FED. AID PROJECT		

60B07

PROJECT NO.	SECTION	COUNTY	TOTAL SHEETS	SHEET NO.
94-04		COOK	60	24
STA.	TO STA.			
FED. AID DIST. NO.	ILLINOIS	FED. AID PROJECT		



All materials shown on this sheet furnished under a separate Steel Fabrication Contract (Section 1985-081F), unless noted otherwise.

* NOTE:
Optional weld may be used in the event that bolting of the connection is not feasible as determined in the field by the engineer. Modification of the gusset plates may be required to provide adequate clearance for welding. - Cost incidental to erecting structural steel.

A24, N-9
SHEET A24 OF A60

REVISIONS	
NAME	DATE
(B)	FEB 3, 88

STATE OF ILLINOIS
DEPARTMENT OF TRANSPORTATION
F.A.I. ROUTE 90/94 (DAN RYAN EXPRESSWAY)
SECTION 1985-082 R - COOK COUNTY
S.B. MAINTENANCE RECONSTRUCTION
STRUCTURE 016-0137
DIAPHRAGM DETAILS
Scale: NONE
Date: AUG. 14, 1987
Checked By: J.L.E.M.
ENVIRONMENTAL ENGINEERS INC.
Chicago, Illinois

REVISIONS	
NAME	DATE

ILLINOIS DEPARTMENT OF TRANSPORTATION
F.A.I. 94/90 (DAN RYAN EXPRESSWAY)
DAN RYAN ELEVATED BRIDGE
BEARING REPLACEMENT & STEEL REPAIR
EXISTING PLAN INFORMATION
SN 016-0137
SCALE: NTS
DATE: 5/18/2007
DRAWN BY: LAM
CHECKED BY: BLU

FOR INFORMATION ONLY

BOWMAN, BARRETT & ASSOCIATES INC.
CONSULTING ENGINEERS
Chicago, Illinois
312.228.0100
www.bbainc.com

S:\60B07\BRIDGE\DIAPHRAGM\60B07.DWG 01/17/07 5:45:52 PM