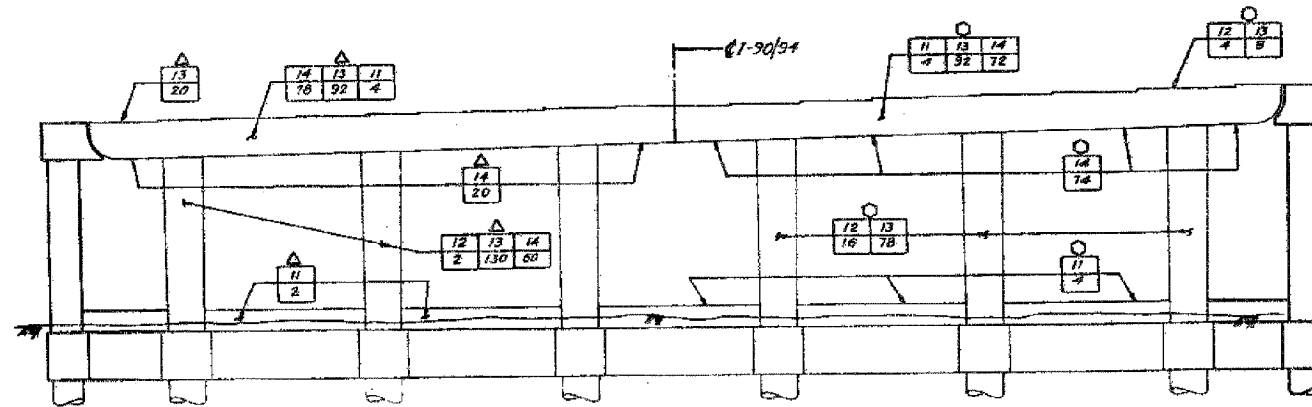


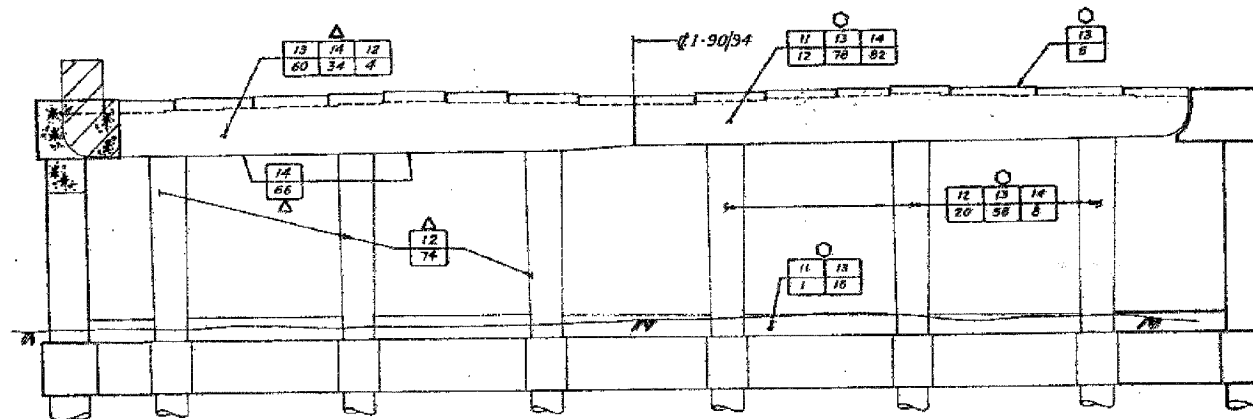
F.A.I.	SECTION	COUNTY	TOTAL SHEETS	SHEET NO.
94/90	2005-086 I	COOK	228	151
STA.	TO STA.			
FED. ROAD DIST. NO.	ILLINOIS	FED. AID PROJECT		

60B07

FED. ROAD DIST. NO.	SECTION	COUNTY	TOTAL SHEETS	SHEET NO.
94/90	I	COOK	228	151
STA.	TO STA.			
FED. ROAD DIST. NO.	ILLINOIS	FED. AID PROJECT		



PIER 1
(Looking North)



PIER 2
(Looking North)

LEGEND

INITIAL CONSTRUCTION

EXISTING PIER

ADVANCE WORK

SUBSTRUCTURE WIDENING
SUBSTRUCTURE REMOVAL

S.B. MAINLINE RECONSTRUCTION

PIER REMOVAL
PIER REPLACEMENT
PIER REHABILITATION (SEE NOTE 'A')

N.B. MAINLINE RECONSTRUCTION

PIER REMOVAL
PIER REPLACEMENT
PIER REHABILITATION (SEE NOTE 'A')

NOTE 'A'

INDICATES TYPE OF REPAIR (FOR DETAILS SEE SHT. PR 1)
INDICATES AREA OF DISTRESS (EXPRESSED IN SQ. FT. OR LIN. FT.)

SHEET C32 OF C38

STATE OF ILLINOIS
DEPARTMENT OF TRANSPORTATION
F.A.I. ROUTE 94/90 (DAN RYAN EXPRESSWAY)
SECTION 1985-082 R - COOK COUNTY
S.B. MAINLINE RECONSTRUCTION
SUBSTRUCTURE WIDENING REHABILITATION & REPLACEMENT
STRUCTURE 016-111 (MAINLINE)
PIERS 1&2
Scale: NONE
Date: AUGUST, 1987
Checked By: RJ
Drawn By: SAF
ENVIRONMENTAL ENGINEERS INC.
Chicago, Illinois

REVISIONS	
Name	Date

FOR INFORMATION ONLY

REVISIONS	NAME	DATE

ILLINOIS DEPARTMENT OF TRANSPORTATION
F.A.I. 94/90 (DAN RYAN EXPRESSWAY)
DAN RYAN ELEVATED BRIDGE
BEARING REPLACEMENT & STEEL REPAIR
EXISTING PLAN INFORMATION
SN 016-1111
SCALE: NTS
DATE: 5/18/2007
DRAWN BY: LAM
CHECKED BY: BLU

BOWMAN, BARRETT & ASSOCIATES INC.
CONSULTING ENGINEERS
Chicago, Illinois
312.228.0100
www.bbainc.com

I:\60B07\001\BRIDGE\AS\ASHEET\SN60_21A_016-1111-EP10.dwg 5/18/2007 5:24:25 PM