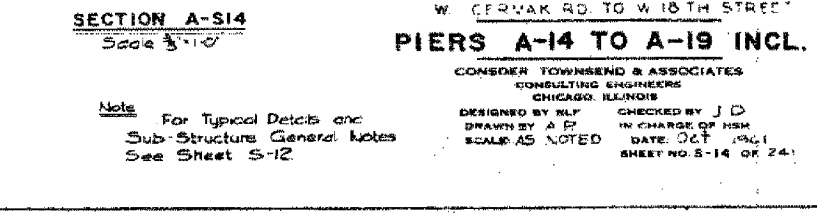
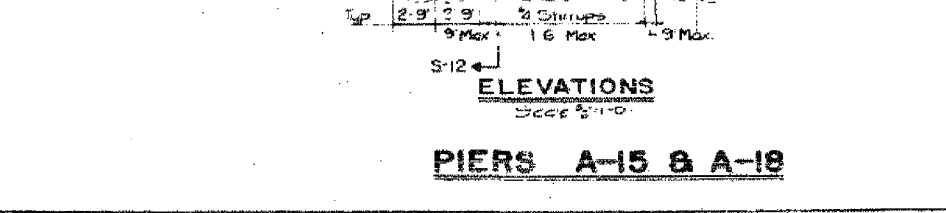
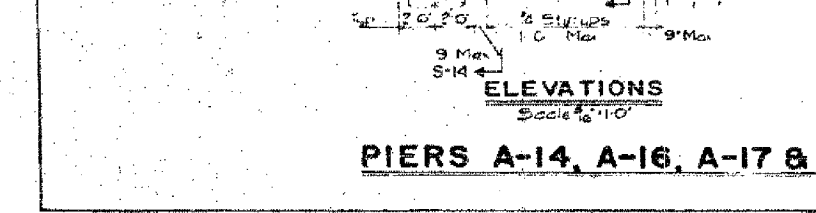
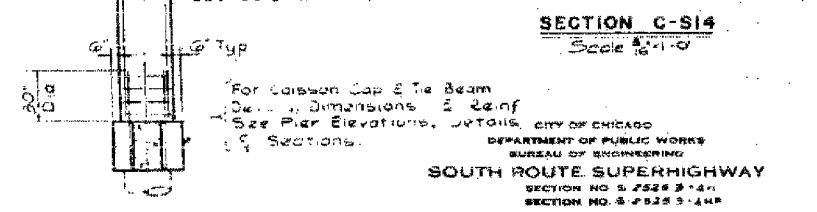
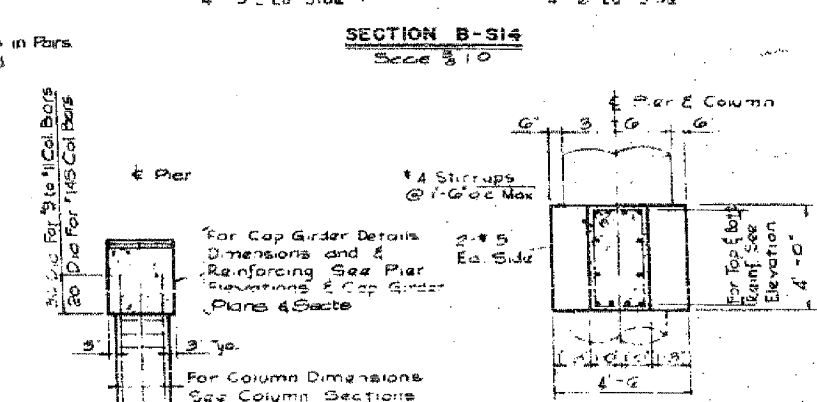
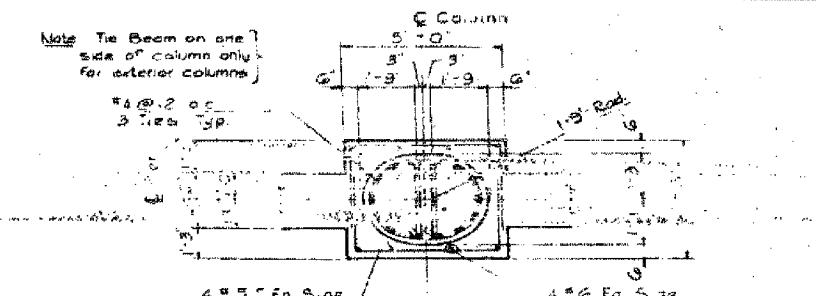
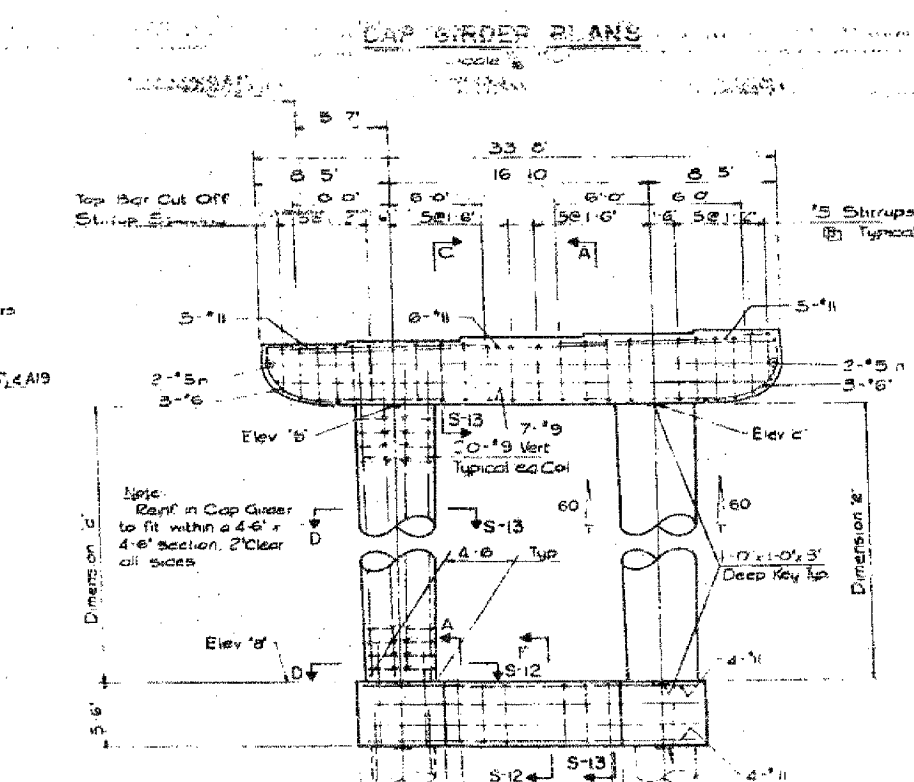
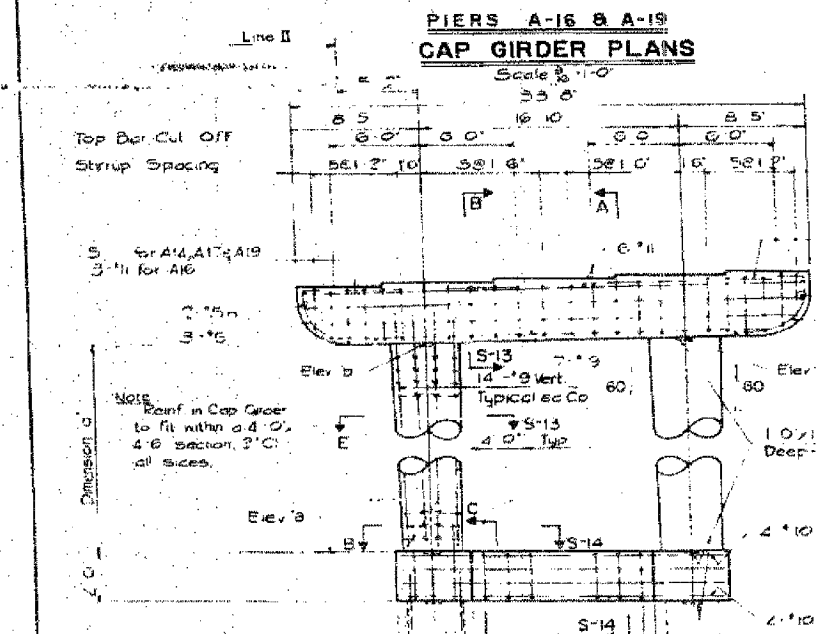
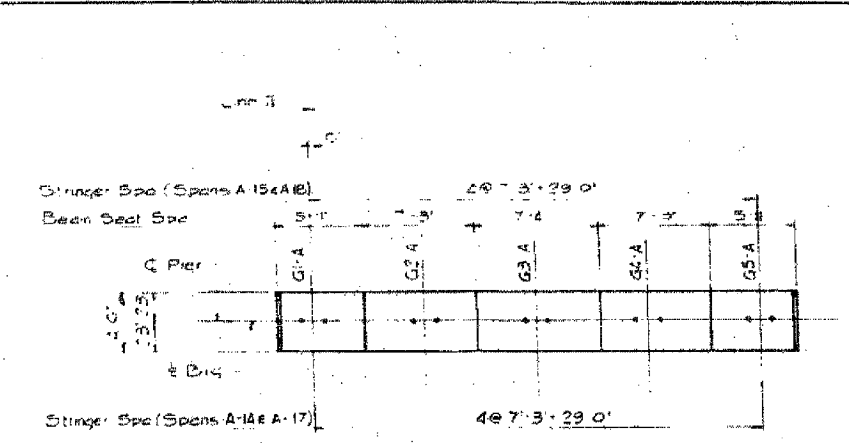
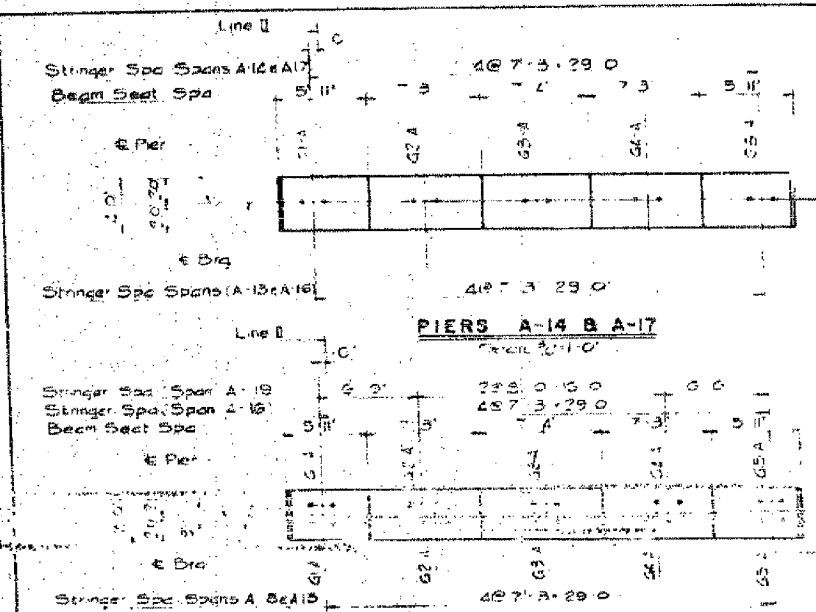


ROUTE NO.	SEC.	COUNTY	TOTAL SHEETS	SHEET NO.
F.A.I. 84	2005-086 I	COOK	228	181
STA.		TO STA.		
FED. ROAD DIST. NO.		ILLINOIS	FED. AID PROJECT	
60B07				

PIER No.	Elev. A	Elev. D	Elev. F	Elev. G	Elev. H	BEAM ELEVATIONS				
						G1-A	G2-A	G3-A	G4-A	G5-A
A14	110.00	31.52	31.71	21.62	21.82	36.06	36.2	36.19	36.26	36.34
A15	100.00	30.73	30.78	20.58	20.92	34.95	35.07	35.22	35.36	35.51
A16	100.00	28.45	28.80	18.53	18.93	32.99	33.10	33.25	33.39	33.53
A17	100.00	26.44	26.80	16.5	16.93	30.96	31.08	31.23	31.38	31.53
A18	100.00	25.45	25.83	15.52	15.10	30.01	30.13	30.28	30.42	30.57
A19	100.00	23.91	24.41	13.103	14.43	28.51	28.67	28.84	29.01	29.14



Note: For Typical Details and Sub-Structures General Notes See Sheet S-12.

ILLINOIS DEPARTMENT OF TRANSPORTATION  
 F.A.I. 94/90 (DAN RYAN EXPRESSWAY)  
 DAN RYAN ELEVATED BRIDGE  
 BEARING REPLACEMENT & STEEL REPAIR  
 EXISTING PLAN INFORMATION  
 SN 016-1112  
 SCALE: NTS  
 DATE: 5/18/2007  
 DRAWN BY: LAM  
 CHECKED BY: BLU

FOR INFORMATION ONLY

BOWMAN, BARRETT & ASSOCIATES INC.  
 CONSULTING ENGINEERS  
 Chicago, Illinois  
 312.228.0100  
 www.bbancinc.com

REVISIONS	
NAME	DATE

5/24/2007 9:06:25 PM