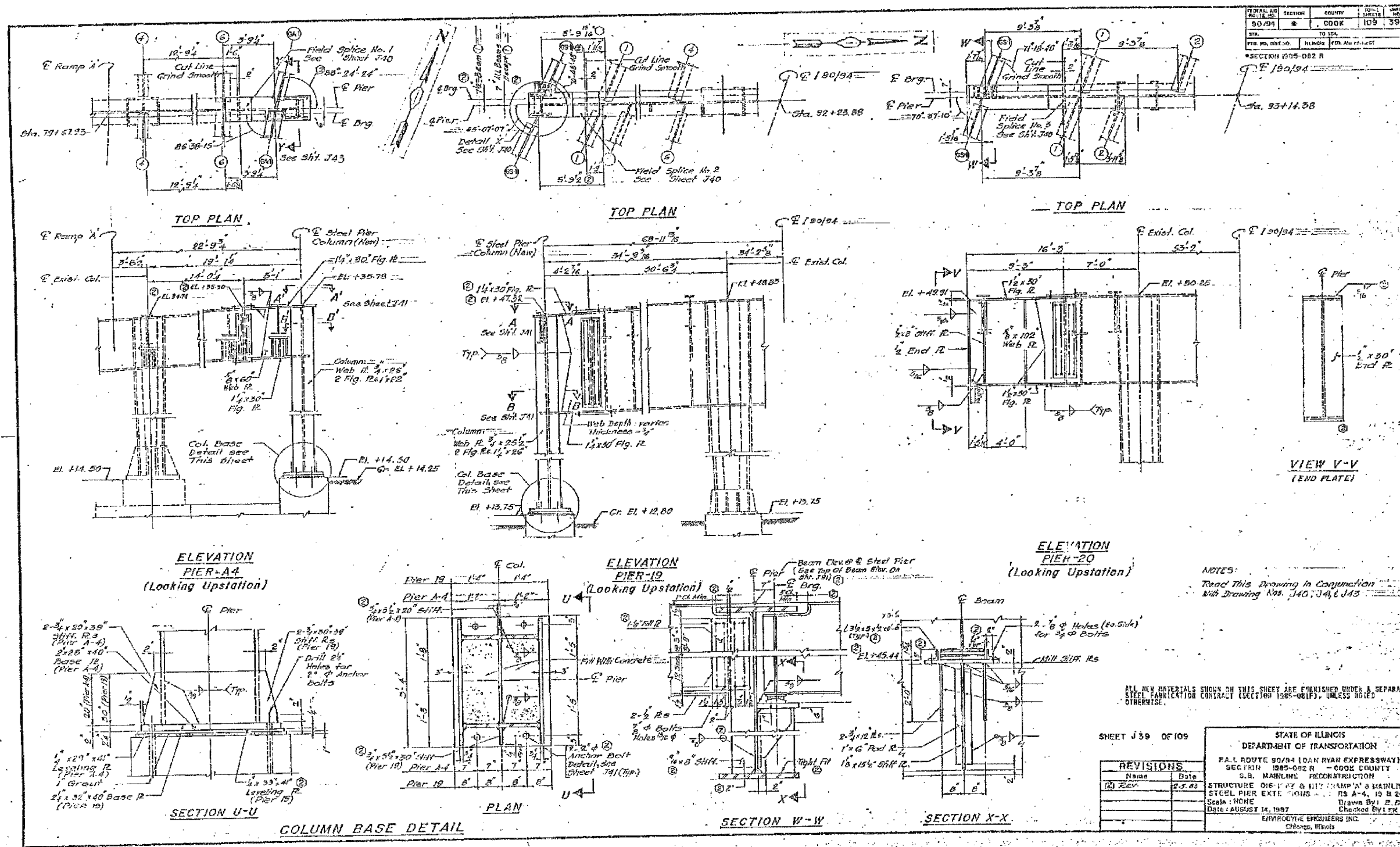


60B07



NOTES:  
 Read This Drawing in Conjunction  
 with Drawing Nos. J40, J41 & J43

ALL NEW MATERIALS SHOWN ON THIS SHEET ARE FURNISHED UNDER A SEPARATE  
 STEEL FABRICATION CONTRACT (SECTION 1985-081F), UNLESS NOTED  
 OTHERWISE.

SHEET J39 OF 109

REVISIONS	
Name	Date
Rev	2.5.03

STATE OF ILLINOIS  
 DEPARTMENT OF TRANSPORTATION  
 F.A.I. ROUTE 94/90 (DAN RYAN EXPRESSWAY)  
 SECTION 1985-082 R - COOK COUNTY  
 S.B. MAINLINE RECONSTRUCTION  
 STRUCTURE 016-117 & 017 (RAMP 'A' & MAINLINE)  
 STEEL PIER EXTENSIONS - SN A-4, 19 & 20  
 Scale: NONE  
 Date: AUGUST 14, 1997  
 Drawn By: E.D.  
 Checked By: E.D.  
 ENVIRONMENTAL ENGINEERS INC.  
 Chicago, Illinois

FOR INFORMATION ONLY

REVISIONS	
NAME	DATE

ILLINOIS DEPARTMENT OF TRANSPORTATION  
 F.A.I. 94/90 (DAN RYAN EXPRESSWAY)  
 DAN RYAN ELEVATED BRIDGE  
 BEARING REPLACEMENT & STEEL REPAIR  
 EXISTING PLAN INFORMATION  
 SN 016-117 & SN 016-1067  
 SCALE: NTS  
 DATE: 5/18/2007  
 DRAWN BY: LAM  
 CHECKED BY: BLU

BOWMAN, BARRETT & ASSOCIATES INC.  
 CONSULTING ENGINEERS  
 Chicago, Illinois  
 312.228.0100  
 www.bbainc.com

I:\66000\BRIDGE\21A\SHEET\60B07-21A-016-106-117-EP113.dwg 5/18/2007 5:47:50 PM