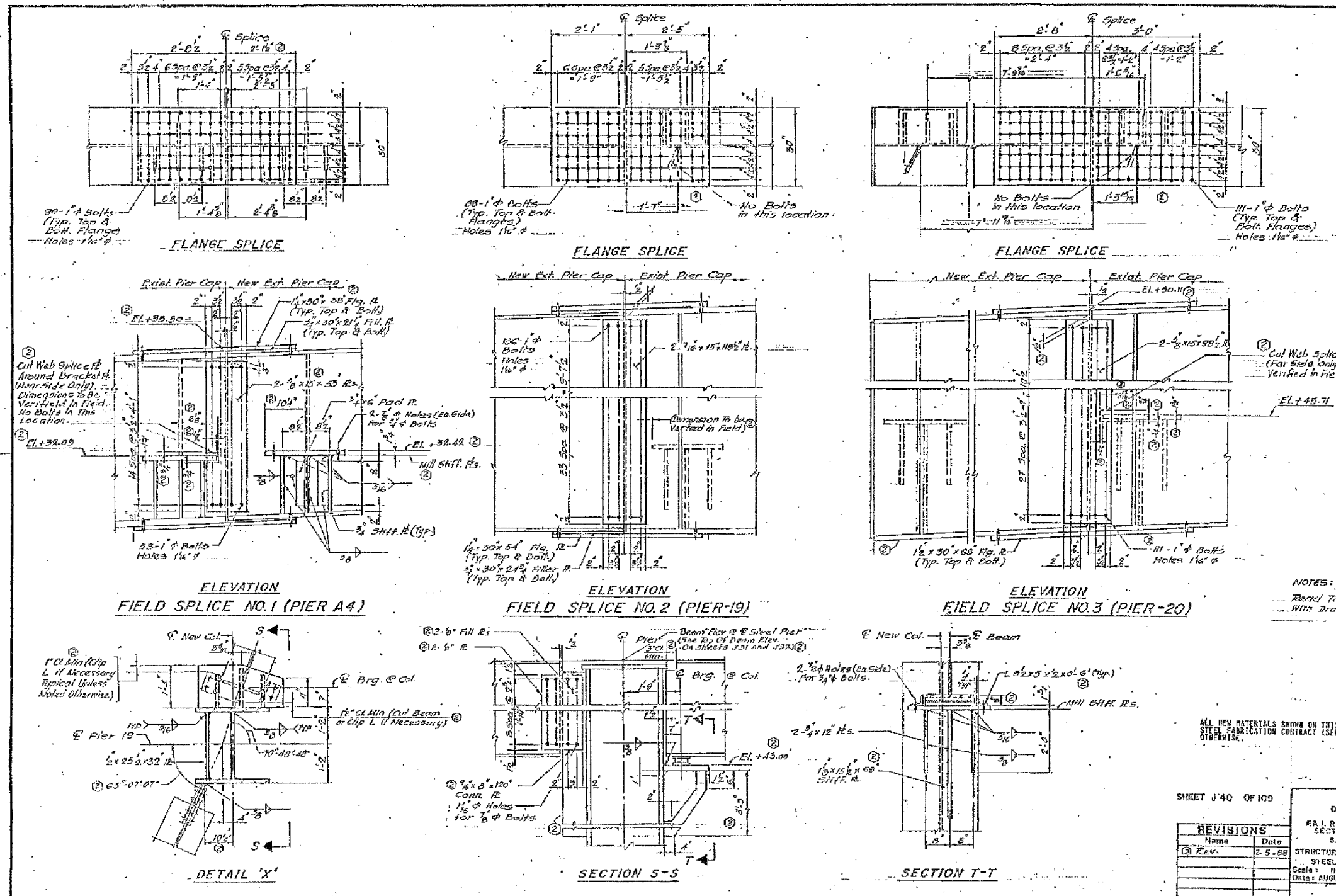


SECTION	NO.	DATE
90/84	1	10/94
STA.	TO STA.	
FED. ROAD DIST. NO.	ILLINOIS	FED. AID PROJECT

*SECTION: 1985-082 R



NOTES:
 Read This Drawing in Conjunction
 With Drawing Nos. 139, 141, & 143

ALL NEW MATERIALS SHOWN ON THIS SHEET ARE FURNISHED ON A SEPARATE
 STEEL FABRICATION CONTRACT (SECTION 1985-081F), UNLESS NOTED
 OTHERWISE.

SHEET J'40 OF 109

REV.	NAME	DATE
1	Rev.	2-5-88

STATE OF ILLINOIS
 DEPARTMENT OF TRANSPORTATION
 F.A.I. ROUTE 80/94 (DAN RYAN EXPRESSWAY)
 SECTION 1985-082 R - COOK COUNTY
 S.B. MAINLINE RECONSTRUCTION
 STRUCTURE 016-1067 & 1117 (RAMP & MAINLINE)
 STEEL PIER DETAILS (PIERS A-4, 19 & 20)
 Scale: NONE
 Date: AUGUST 14, 1987
 Drawn By: ED
 Checked By: SK
 ENVIRONMENTAL ENGINEERS INC.
 Chicago, Illinois

REV.	NAME	DATE

ILLINOIS DEPARTMENT OF TRANSPORTATION
 F.A.I. 94/90 (DAN RYAN EXPRESSWAY)
 DAN RYAN ELEVATED BRIDGE
 BEARING REPLACEMENT & STEEL REPAIR
 EXISTING PLAN INFORMATION
 SN 016-1117 & SN 016-1067
 SCALE: NTS
 DATE: 5/18/2007
 DRAWN BY: LAM
 CHECKED BY: BLU

FOR INFORMATION ONLY

BOWMAN, BARRETT & ASSOCIATES INC.
 CONSULTING ENGINEERS
 Chicago, Illinois
 312.228.0100
 www.bbainc.com

5/24/2007 5:07:52 PM