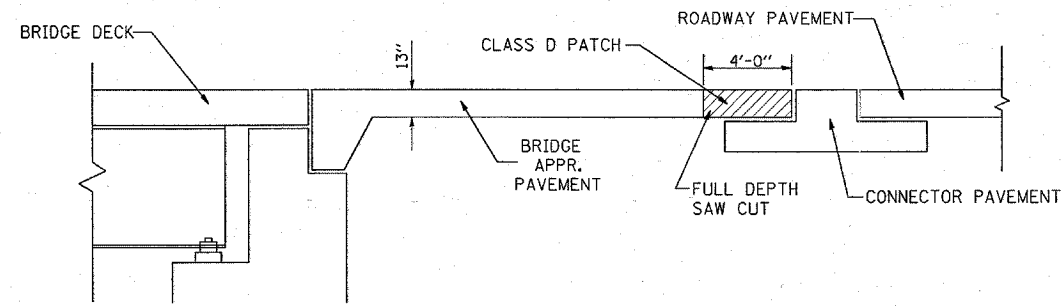


PLAN VIEW



CLASS D PATCH DETAIL

HOT-MIX ASPHALT MIXTURE REQUIREMENTS				
CLASS D PATCH		MIXTURE TYPE	AC TYPE	AIR VOIDS
TOP 2"		POLYMERIZED HOT-MIX ASPHALT SURFACE COURSE, MIX "F", N90, (IL 9.5mm)	SBS/SBR PG 70-22	4% @ 90 GYR
BOTT. 11"		POLYMERIZED HOT-MIX ASPHALT BINDER COURSE, IL-19.0, N90	SBS/SBR PG 70-22	4% @ 90 GYR.

THE UNIT WEIGHT USED TO CALCULATE ALL HOT-MIX ASPHALT SURFACE MIXTURES IS 112 LBS/SQ.YD/IN

FILE NAME =
c:\projects\dl31986\dl31986a.dgn

USER NAME = midyja
PLOT SCALE = 50.00' / IN.
PLOT DATE = 4/4/2008

DESIGNED -
DRAWN -
CHECKED -
DATE -

REVISED -
REVISED -
REVISED -
REVISED -

STATE OF ILLINOIS
DEPARTMENT OF TRANSPORTATION

CLASS D PATCH

SCALE: SHEET NO. OF SHEETS STA. TO STA.

F.A.P. RTE.	SECTION	COUNTY	TOTAL SHEETS	SHEET NO.
350	3068 B-1	COOK	11	4
CONTRACT NO. 60B29				
FED. ROAD DIST. NO. 1 ILLINOIS FED. AID PROJECT				

Rev.