

Bridge General Notes

All structural steel shall conform to AASHTO Classification M-270 Gr. 36, unless otherwise noted.

Fasteners shall be high strength bolts. Bolts  $\frac{3}{4}$ "  $\phi$ , open holes  $\frac{13}{16}$ "  $\phi$ , unless otherwise noted.

Reinforcement bars shall conform to the requirements of ASTM A 706 Gr 60 (IL Modified). See Special Provisions.

Reinforcement bars designated (E) shall be epoxy coated

Plan dimensions and details relative to existing plans are subject to routine variations. The Contractor shall field verify existing dimensions and details affecting new construction and make necessary approved adjustments prior to construction or ordering of materials. Such variations shall not be cause for additional compensation for a change in scope of the work, however, the Contractor will be paid for the quantity actually furnished based upon the unit price bid for the work.

The existing structural steel coating contains lead. The Contractor shall take appropriate precautions to deal with the presence of lead on this project.

Existing structural steel that will be in contact with new structural steel shall be cleaned and painted prior to erection as required by the Special Provision "Cleaning and Painting Contact Surface Areas of Existing Steel Structures".

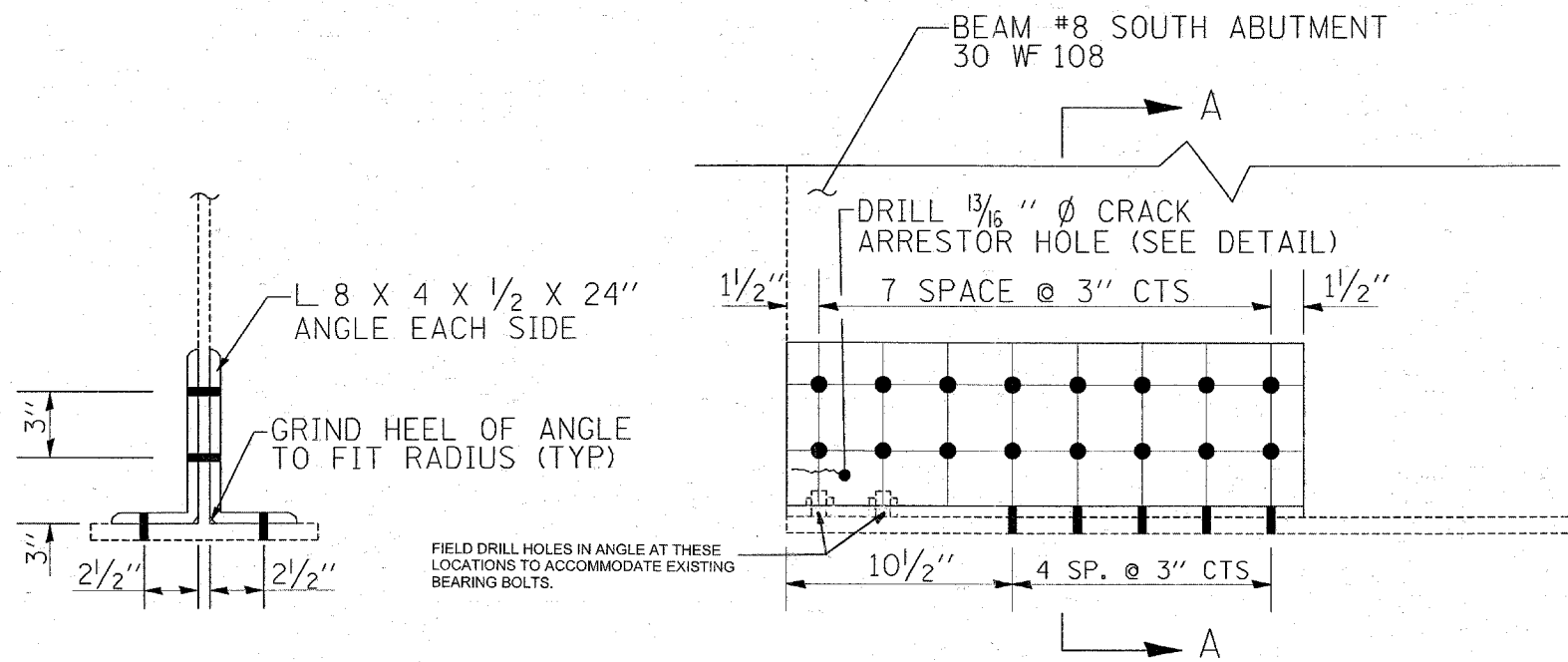
Existing reinforcement bars extending into the removal area shall be cleaned, straightened and incorporated into the new construction. Any reinforcement bars that are damaged during concrete removal shall be replaced with an approved bar splicer or anchorage system. Cost Included with Concrete Removal.

If the analysis submitted to the Contractor for the jacking/temporary support system to be used shows temporary stiffeners are required to prevent web crippling or buckling, the stiffeners shall be steel and bolted to the web. If stiffeners are not required, hardwood timbers shall be installed tightly between the top and bottom flange to prevent flange rotation.

Joint plates and attached bars shall be shop painted with the inorganic zinc rich primer. No field paint required.

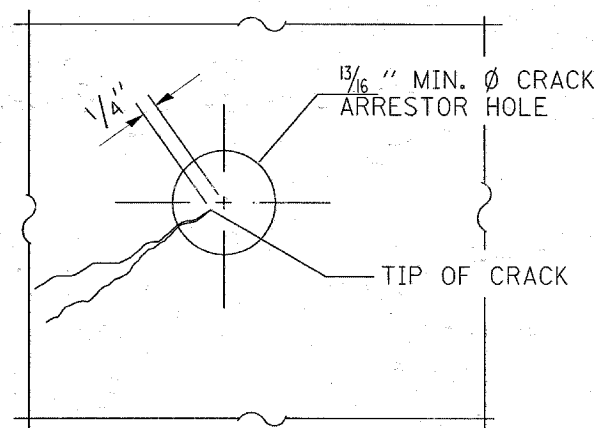
TOTAL BILL OF MATERIALS

<i>Description</i>	<i>Unit</i>	<i>Quantity</i>
Concrete Removal	Cu Yd	1.4
Concrete Structures	Cu Yd	2.1
Furnishing and Erecting Structural Steel	Pound	1030
Jack and Remove Existing Bearings	Each	4
Reinforcement Bars, Epoxy Coated	Pound	440
Anchor Bolts, 1"	Each	16
High Load Multi-Rotational Bearings, Fixed - 300 kip	Each	4
Structural Repair of Concrete $\leq 5$ "	Sq Ft	1
Temporary Shoring and Cribbing	Each	4



SECTION A-A

BEAM WEB REPAIR DETAIL



CRACK ARRESTOR HOLE DETAIL

**Note:**

Locate crack tip using liquid dye penetrant or magnetic particle testing. Drill  $\frac{13}{16}$ " min.  $\phi$  Crack Arrestor hole at the crack tip. After Crack Arrestor hole has been drilled, dye penetrant or magnetic particle testing shall be used to verify that the drilled hole has captured the crack tip. Cost shall be included in the cost of "Furnishing and Erecting Structural Steel".