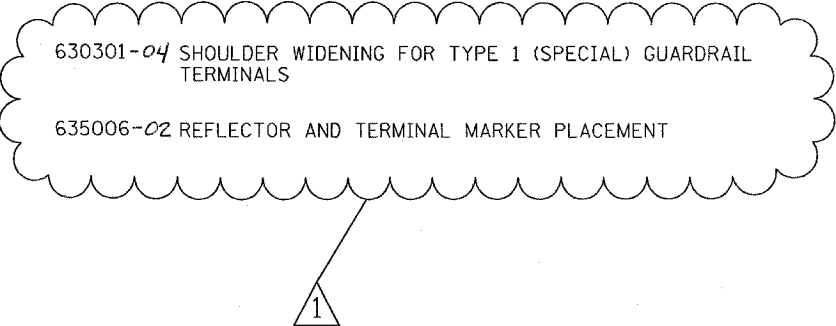


INDEX OF SHEETS

STATE STANDARDS

GENERAL NOTES

SHEET NO.	DESCRIPTION	STANDARD NO.	DESCRIPTION
1	TITLE SHEET	000001-05	TYPICAL SYMBOLS, ABBREVIATIONS AND PATTERNS
2	INDEX OF SHEETS, STATE STANDARDS & GENERAL NOTES	442201-03	CLASS C AND D PATCHES
3	SUMMARY OF QUANTITIES	604001-02	FRAME AND LIDS, TYPE 1
4-5	EXISTING AND PROPOSED TYPICAL SECTIONS	604091-01	FRAME AND GRATE, TYPE 24
6-11	ROADWAY AND PAVEMENT MARKING PLANS	606001-03	CONCRETE CURB AND COMBINATION CONCRETE CURB AND GUTTER
12-15	DETECTOR LOOP REPLACEMENT PLANS	701006-02	OFF-ROAD OPERATIONS, 2L, 2W, 4.5 M (15') TO 600 MM (24") FROM PAVEMENT EDGE
16	PAVEMENT PATCHING FOR HMA SURFACED PAVEMENT	701011-01	OFF-ROAD MOVING OPERATIONS, 2L, 2W DAY ONLY
17	CURB OR CURB AND GUTTER REMOVAL AND REPLACEMENT	701201-02	LANE CLOSURE, 2L, 2W, DAY ONLY, ON-ROAD TO 600 MM (24") OFF-ROAD
18	BUTT JOINT AND HMA TAPER	701306-01	LANE CLOSURE, 2L, 2W, SLOW MOVING OPERATIONS - DAY ONLY
19	TRAFFIC CONTROL AND PROTECTION FOR SIDE ROADS, INTERSECTIONS AND DRIVEWAYS	701501-04	URBAN LANE CLOSURE, 2L, 2W, UNDIVIDED
20	TYPICAL APPLICATIONS: RAISED REFLECTIVE PAVEMENT MARKERS (SNOW-PLOW RESISTANT)	701901	TRAFFIC CONTROL DEVICES
21	DISTRICT ONE TYPICAL PAVEMENT MARKINGS	886001	DETECTOR LOOP INSTALLATION
22	TRAFFIC CONTROL AND PROTECTION OF TURN BAYS (TO REMAIN OPEN TO TRAFFIC)	886006	TYPICAL LAYOUT FOR DETECTION LOOPS
23	PAVEMENT MARKING LETTERS AND SYMBOLS FOR TRAFFIC STAGING	630301-04	SHOULDER WIDENING FOR TYPE 1 (SPECIAL) GUARDRAIL TERMINALS
24	ARTERIAL INFORMATION SIGNING	635006-02	REFLECTOR AND TERMINAL MARKER PLACEMENT
25	DISTRICT ONE STANDARD TRAFFIC SIGNAL DESIGN		
26	DISTRICT 1 DETECTOR LOOP INSTALLATION DETAILS FOR ROADWAY RESURFACING		



BEFORE STARTING ANY EXCAVATION, THE CONTRACTOR SHALL CALL "JULIE" AT (800) 892-0123 OR 811 FOR FIELD LOCATIONS OF BURIED ELECTRIC, TELEPHONE, AND GAS FACILITIES. (48 HOUR NOTIFICATION REQUIRED)

THE CONTRACTOR WILL NOT BE ABLE TO SET UP A YARD OR FIELD OFFICE ON STATE PROPERTY WITHOUT THE WRITTEN PERMISSION OF THE DEPARTMENT.

BUTT JOINTS WILL BE INSTALLED AT THE ENDS OF RESURFACING (WHERE RESURFACING MEETS EXISTING PAVEMENT) IN ACCORDANCE WITH THE "BUTT JOINT AND HMA TAPER DETAILS" SHEET INCLUDED IN THE PLANS UNLESS OTHERWISE SPECIFIED.

WHEN MILLED PAVEMENT IS OPEN TO TRAFFIC, THE MAXIMUM GRADE DIFFERENTIAL BETWEEN PASSES OF THE MILLING MACHINE SHALL NOT EXCEED 1 1/2 INCHES WHERE THE SPEED LIMIT IS 45 MPH OR LESS, AND 1 INCH WHERE THE SPEED LIMIT IS OVER 45 MPH. WITH WRITTEN APPROVAL FROM THE RESIDENT ENGINEER, A MAXIMUM GRADE DIFFERENTIAL OF 3 INCHES MAY BE ALLOWED IF THE EDGE OF THE MILLING IS SLOPED A MINIMUM OF 1:3 (V:H).

WHEN ARTIFICIAL LIGHTING IS UTILIZED IN NIGHT OPERATIONS, THE CONTRACTOR SHALL EXERCISE THE UTMOST PRECAUTIONS IN PREVENTING ADVERSE VISABILITY TO THE MOTORING PUBLIC AND ADJOINING RESIDENTIAL AREAS.

ALL PAVEMENT PATCHING LOCATIONS WILL BE DETERMINED IN THE FIELD BY THE ENGINEER.

BEFORE BEGINNING ANY WORK, THE CONTRACTOR SHALL RETAIN AND RECORD FOR FUTURE REFERENCE, ALL EXISTING PAVEMENT MARKING LINES (AND RAISED REFLECTIVE PAVEMENT MARKERS) IN ORDER THAT THESE LOCATIONS CAN BE RE-ESTABLISHED FOR STRIPING. EXACT LOCATIONS OF ALL PAVEMENT MARKINGS SHALL BE AS DIRECTED BY THE ENGINEER.

DOUBLE LANE MARKERS ARE TO BE USED AS SHOWN ON THE DISTRICT ONE DETAIL "TYPICAL APPLICATIONS - RAISED REFLECTIVE PAVEMENT MARKERS (SNOW-PLOW RESISTANT)" SHOWN IN THE PLANS.

THE RESIDENT ENGINEER SHALL CONTACT MS. DEBBIE HANLON, AREA TRAFFIC FIELD ENGINEER, AT (847) 438-2300 A MINIMUM OF 2 WEEKS PRIOR TO PLACEMENT OF FINAL PAVEMENT MARKINGS.

THE RESIDENT ENGINEER SHALL CONTACT THE TRAFFIC CONTROL SUPERVISOR AT (847) 705-4470 A MINIMUM OF 72 HOURS PRIOR TO THE INSTALLATION OF ANY TEMPORARY TRAFFIC CONTROL DEVICES.

FILE NAME = c:\projects\dl37506\dl37506a.dgn	USER NAME = wlgreendp	DESIGNED -	REVISED - DPW - 5/22/08	STATE OF ILLINOIS DEPARTMENT OF TRANSPORTATION	IL 176 (US 14 TO IL 31 INDEX OF SHEETS, STATE STANDARDS AND GENERAL NOTES		F.A.P. RTE.	SECTION	COUNTY	TOTAL SHEETS	SHEET NO.		
	PLOT SCALE = 50,0000 ' / IN.	DRAWN -	REVISED -		SCALE:	SHEET NO. 2 OF 26 SHEETS	STA.	TO STA.	335	120RS-4	MCHENRY	26	2
	PLOT DATE = 5/22/2008	CHECKED -	REVISED -		CONTRACT NO. 60B62								
		DATE -	REVISED -		FED. ROAD DIST. NO. 1 ILLINOIS FED. AID PROJECT								

SUMMARY OF QUANTITIES			URBAN 80% FED. 20% STATE TOTAL QUANTITIES		CONSTRUCTION TYPE CODE				
CODE NO	ITEM	UNIT			I000-2A				
20201006	GRADING AND SHAPING SHOULDERS	UNIT	160	160					
40600200	BITUMINOUS MATERIALS (PRIME COAT)	TON	52	52					
40600300	AGGREGATE (PRIME COAT)	TON	130	130					
40600400	MIXTURE FOR CRACKS, JOINTS, AND FLANGEWAYS	TON	33	33					
40600895	CONSTRUCTING TEST STRIP	EACH	1	1					
40600982	HOT-MIX ASPHALT SURFACE REMOVAL - BUTT JOINT	SQ YD	540	540					
40601005	HOT-MIX ASPHALT REPLACEMENT OVER PATCHES	TON	1214	1214					
40603340	HOT-MIX ASPHALT SURFACE COURSE, MIX "D", N70	TON	5460	5460					
42001300	PROTECTIVE COAT	SQ YD	170	170					
44000158	HOT-MIX ASPHALT SURFACE REMOVAL, 2 1/4"	SQ YD	65000	65000					
44001700	COMBINATION CONCRETE CURB AND GUTTER REMOVAL AND REPLACEMENT	FOOT	500	500					
44002224	HOT-MIX ASPHALT REMOVAL OVER PATCHES, 6"	SQ YD	3614	3614					
44201749	CLASS D PATCHES, TYPE I, 9 INCH	SQ YD	297	297					
44201753	CLASS D PATCHES, TYPE II, 9 INCH	SQ YD	1485	1485					
44201757	CLASS D PATCHES, TYPE III, 9 INCH	SQ YD	445	445					
44201759	CLASS D PATCHES, TYPE IV, 9 INCH	SQ YD	743	743					
48102100	AGGREGATE WEDGE SHOULDER, TYPE B	TON	1215	1215					
60300105	FRAMES AND GRATES TO BE ADJUSTED	EACH	5	5					
60300305	FRAMES AND LIDS TO BE ADJUSTED	EACH	1	1					
60300310	FRAMES AND LIDS TO BE ADJUSTED (SPECIAL)	EACH	57	57					
60404950	FRAMES AND GRATES, TYPE 24	EACH	1	1					
60406100	FRAMES AND LIDS, TYPE 1, CLOSED LID	EACH	14	14					
67000400	ENGINEER'S FIELD OFFICE, TYPE A	CAL MO	6	6					
67100100	MOBILIZATION	L SUM	1	1					
70100450	TRAFFIC CONTROL AND PROTECTION, STANDARD 701201	L SUM	1	1					
70100460	TRAFFIC CONTROL AND PROTECTION, STANDARD 701306	L SUM	1	1					

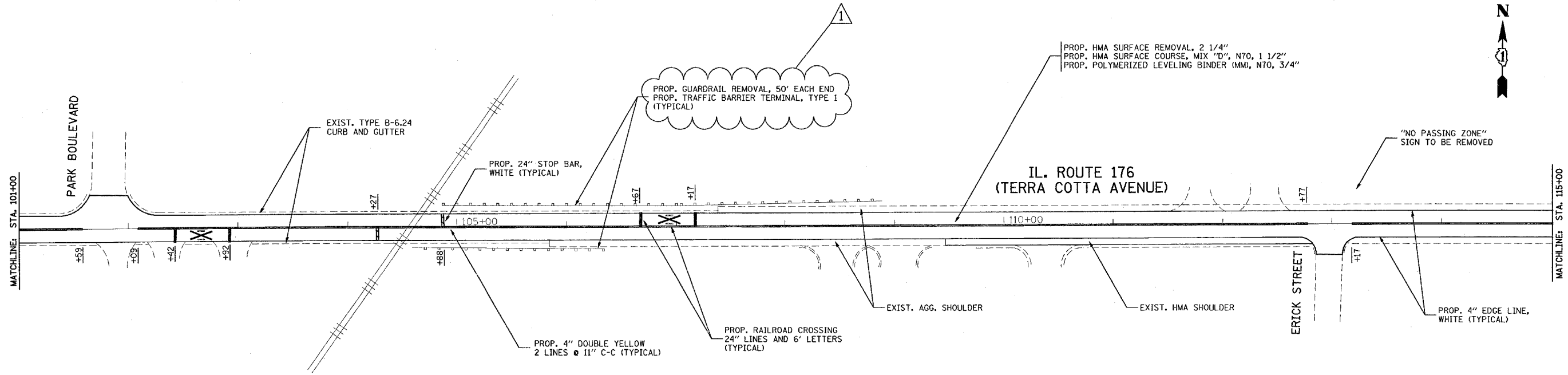
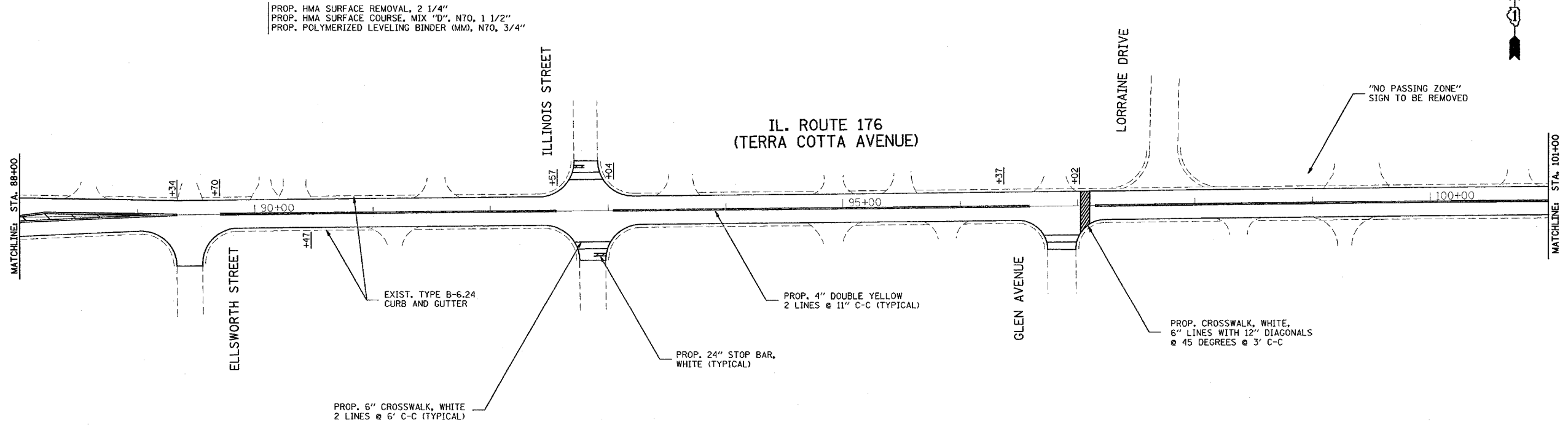
SUMMARY OF QUANTITIES			URBAN 80% FED. 20% STATE TOTAL QUANTITIES		CONSTRUCTION TYPE CODE				
CODE NO	ITEM	UNIT			I000-2A				
70102620	TRAFFIC CONTROL AND PROTECTION, STANDARD 701501	L SUM	1	1					
70300100	SHORT-TERM PAVEMENT MARKING	FOOT	9950	9950					
70300210	TEMPORARY PAVEMENT MARKING - LETTERS AND SYMBOLS	SQ FT	930	930					
70300220	TEMPORARY PAVEMENT MARKING - LINE 4"	FOOT	60,350	60,350					
70300240	TEMPORARY PAVEMENT MARKING - LINE 6"	FOOT	3770	3770					
70300260	TEMPORARY PAVEMENT MARKING - LINE 12"	FOOT	1525	1525					
70300280	TEMPORARY PAVEMENT MARKING - LINE 24"	FOOT	400	400					
70301000	WORK ZONE PAVEMENT MARKING REMOVAL	SQ FT	3315	3315					
72400100	REMOVE SIGN PANEL ASSEMBLY - TYPE A	EACH	2	2					
78000100	THERMOPLASTIC PAVEMENT MARKING - LETTERS AND SYMBOLS	SQ FT	930	930					
* 78000200	THERMOPLASTIC PAVEMENT MARKING - LINE 4"	FOOT	60,350	60,350					
* 78000400	THERMOPLASTIC PAVEMENT MARKING - LINE 6"	FOOT	3770	3770					
* 78000600	THERMOPLASTIC PAVEMENT MARKING - LINE 12"	FOOT	1525	1525					
* 78000650	THERMOPLASTIC PAVEMENT MARKING - LINE 24"	FOOT	400	400					
* 78100100	RAISED REFLECTIVE PAVEMENT MARKER	EACH	627	627					
78300200	RAISED REFLECTIVE PAVEMENT MARKER REMOVAL	EACH	502	502					
* 88600600	DETECTOR LOOP REPLACEMENT	FOOT	2137	2137					
X0322256	TEMPORARY INFORMATION SIGNING	SQ FT	51.4	51.4					
X4067107	POLYMERIZED LEVELING BINDER (MACHINE METHOD), IL-4.75, N50	TON	2560	2560					
NP Z0018500	DRAINAGE STRUCTURES TO BE CLEANED	EACH	64	64					
Z0048665	RAILROAD PROTECTIVE LIABILITY INSURANCE	L SUM	1	1					
© 30076000	TRAINERS	HOUR	1000	1000					
63100167	TRAFFIC BARRIER TERMINAL, TYPE 1 (SPECIAL) TANGENT	EACH	8	8					
63200310	GUARDRAIL REMOVAL	FOOT	400	400					
78200420	GUARDRAIL MARKERS, TYPE B	EACH	8	8					
78201000	TERMINAL MARKER - DIRECT APPLIED	EACH	8	8					

* SPECIALTY ITEM
 NP= Non-participating
 © 1980

REVISIONS		ILLINOIS DEPARTMENT OF TRANSPORTATION	
NAME	DATE	SUMMARY OF QUANTITIES	

Rev. 5-29-08

4/7/2008 10:56:00 AM



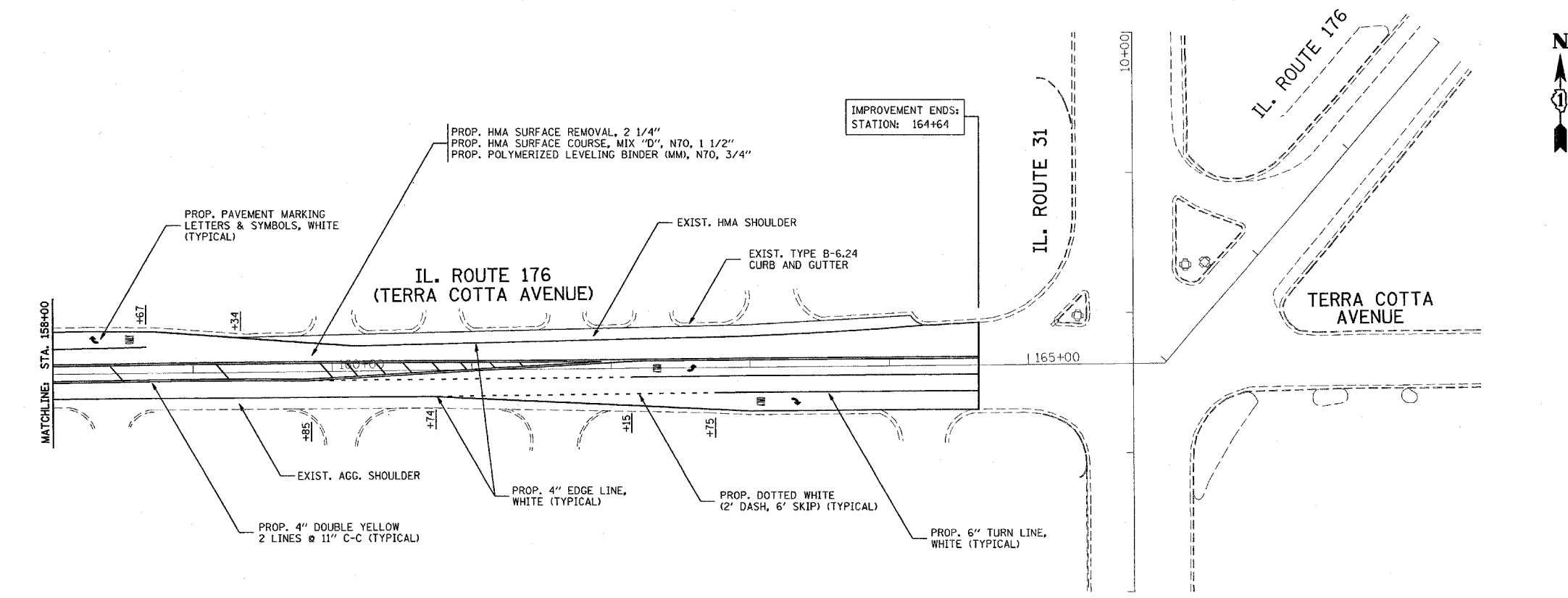
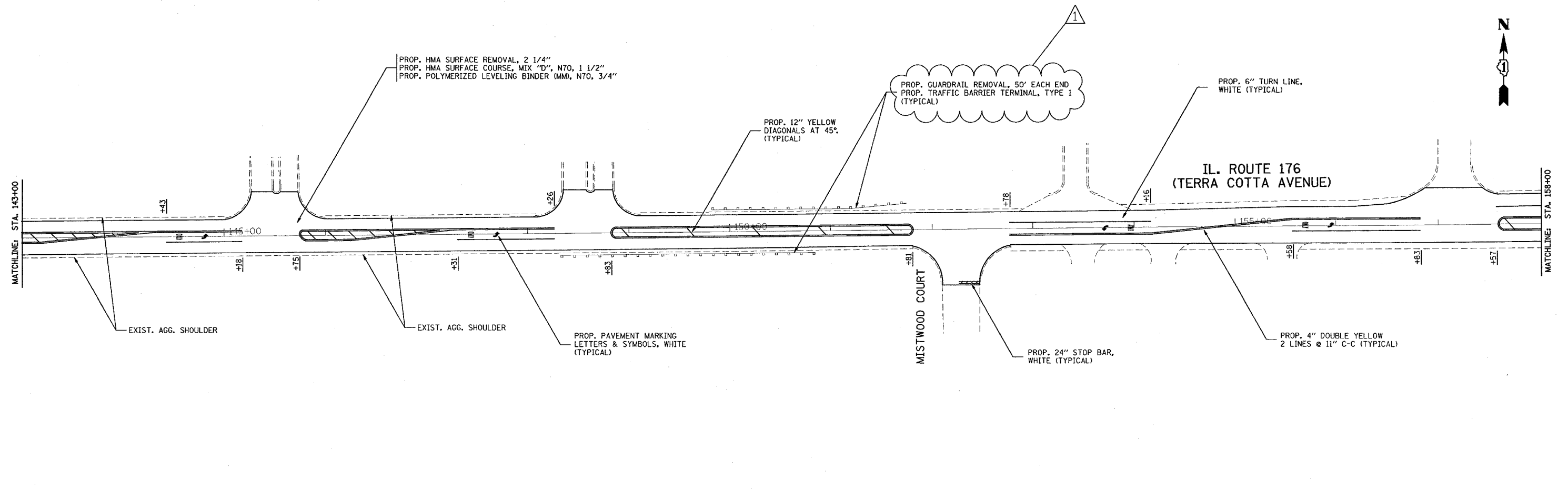
NOTES:

LIMIT OF RESURFACING ON SIDE-STREETS SHALL BE AS SHOWN ON THE PLANS OR AS DIRECTED BY THE ENGINEER.

ALL FINAL PAVEMENT MARKINGS SHALL BE THERMOPLASTIC (OF THE EXTRUDED TYPE) AND SHOULD BE PLACED IN ACCORDANCE WITH "DISTRICT ONE TYPICAL PAVEMENT MARKINGS" DETAIL, (TC-13).

ALL RAISED REFLECTIVE PAVEMENT MARKINGS SHALL BE PLACED IN ACCORDANCE WITH THE DISTRICT ONE "TYPICAL APPLICATIONS RAISED REFLECTIVE PAVEMENT MARKER DETAIL." (TC-11).

FILE NAME = c:\projects\dl37506\dl37506.dgn	USER NAME = wilgreendp	DESIGNED -	REVISED - DPW - 5/22/08	STATE OF ILLINOIS DEPARTMENT OF TRANSPORTATION	ROADWAY AND PAVEMENT MARKING PLANS IL 176 (US 14 TO IL 31)			F.A.P. RTE.	SECTION	COUNTY	TOTAL SHEETS	SHEET NO.
	PLOT SCALE = 50.0000' / IN.	CHECKED -	REVISED -					335	120RS-4	MCHENRY	26	9
	PLOT DATE = 5/22/2008	DATE -	REVISED -		REVISED -	SCALE: SHEET NO. 9 OF 26 SHEETS STA. TO STA.			FED. ROAD DIST. NO. 1 [ILLINOIS] FED. AID PROJECT			
								CONTRACT NO. 60B62				



NOTES:

LIMIT OF RESURFACING ON SIDE-STREETS SHALL BE AS SHOWN ON THE PLANS OR AS DIRECTED BY THE ENGINEER.

ALL FINAL PAVEMENT MARKINGS SHALL BE THERMOPLASTIC (OF THE EXTRUDED TYPE) AND SHOULD BE PLACED IN ACCORDANCE WITH "DISTRICT ONE TYPICAL PAVEMENT MARKINGS" DETAIL, (TC-13).

ALL RAISED REFLECTIVE PAVEMENT MARKINGS SHALL BE PLACED IN ACCORDANCE WITH THE DISTRICT ONE "TYPICAL APPLICATIONS RAISED REFLECTIVE PAVEMENT MARKER DETAIL." (TC-11).

FILE NAME = c:\projects\137506\137506a.dgn	USER NAME = wlgreendp	DESIGNED -	REVISED - Δ DPW - 5/22/08
		DRAWN -	REVISED -
		CHECKED -	REVISED -
		DATE -	REVISED -

**STATE OF ILLINOIS
DEPARTMENT OF TRANSPORTATION**

ROADWAY AND PAVEMENT MARKING PLANS	
IL 176 (US 14 TO IL 31)	
SCALE:	TO STA.
SHEET NO. 11 OF 26 SHEETS	STA. TO STA.

F.A.P. RTE. 335	SECTION 12ORS-4	COUNTY MCHENRY	TOTAL SHEETS 26	SHEET NO. 11
CONTRACT NO. 60B62				
FED. ROAD DIST. NO. 1 ILLINOIS FED. AID PROJECT				