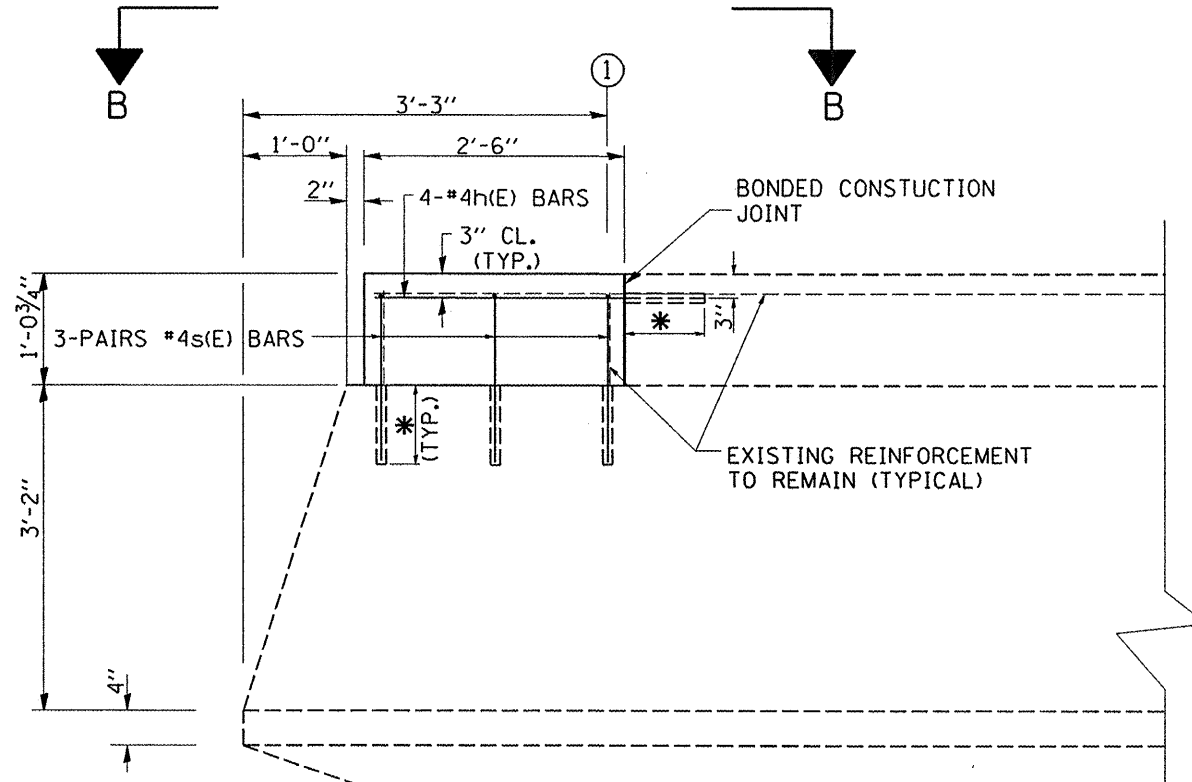


EXISTING SECTION THRU PIER NO. 12
(LOOKING NORTH)

LEGEND:
 INDICATES CONCRETE REMOVAL



PROPOSED SECTION THRU PIER NO. 12
(LOOKING NORTH)

NOTE:
 * DRILL AND EPOXY GROUT 9" MINIMUM INTO THE EXISTING CONCRETE ACCORDING TO ART 584 OF THE STANDARD SPECIFICATIONS COST INCLUDED WITH REINFORCEMENT BARS, EPOXY COATED.

TOTAL BILL OF MATERIALS

BAR	NO.	SIZE	LENGTH	SHAPE
h(E)	4	#4	3'-0"	—
s(E)	6	#4	2'-10"	Γ
REINFORCEMENT BARS (EPOXY COATED)			POUND	20
CONCRETE REMOVAL			CU. YDS.	0.1
CONCRETE STRUCTURE			CU. YDS.	0.2
JACKING AND CRIBBING			EACH	1

NOTES:
 PLAN DIMENSIONS AND DETAILS RELATIVE TO EXISTING PLANS ARE SUBJECT TO ROUTINE VARIATIONS. THE CONTRACTOR SHALL FIELD VERIFY EXISTING DIMENSIONS AND DETAILS AFFECTING NEW CONSTRUCTION AND MAKE NECESSARY APPROVED ADJUSTMENTS PRIOR TO CONSTRUCTION OR ORDERING OF MATERIALS. SUCH VARIATIONS SHALL NOT BE CAUSE FOR ADDITIONAL COMPENSATION FOR A CHANGE IN SCOPE OF THE WORK, HOWEVER, THE CONTRACTOR WILL BE PAID FOR THE QUANTITY ACTUALLY FURNISHED BASED UPON THE UNIT PRICE BID FOR THE WORK.
 REINFORCEMENT BARS SHALL CONFORM TO THE REQUIREMENTS OF ASTM A706 Gr 60 (IL MODIFIED). SEE SPECIAL PROVISIONS.
 EXISTING REINFORCEMENT BARS EXTENDING INTO THE REMOVAL AREA SHALL BE CLEANED, STRAIGHTENED AND INCORPORATED INTO THE NEW CONSTRUCTION. ANY REINFORCEMENT BARS THAT ARE DAMAGED DURING CONCRETE REMOVAL SHALL BE REPLACED WITH APPROVED BAR SPLICER OR ANCHORAGE SYSTEM. COST INCLUDED WITH CONCRETE REMOVAL.