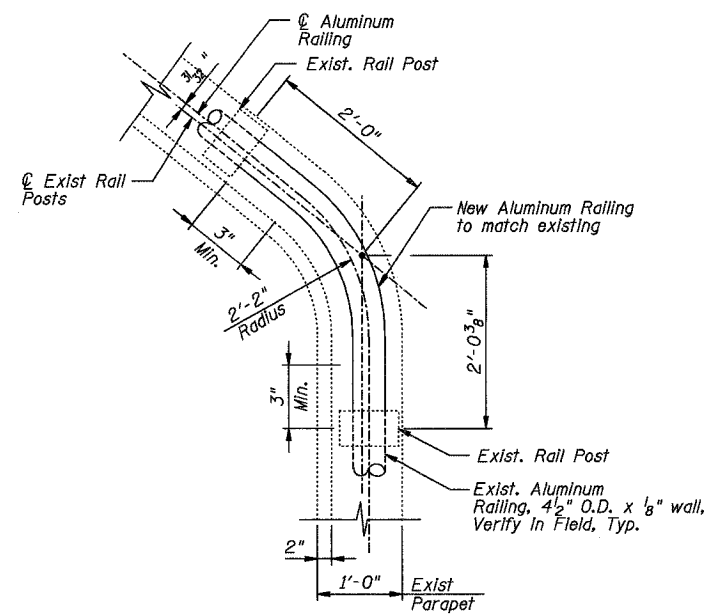
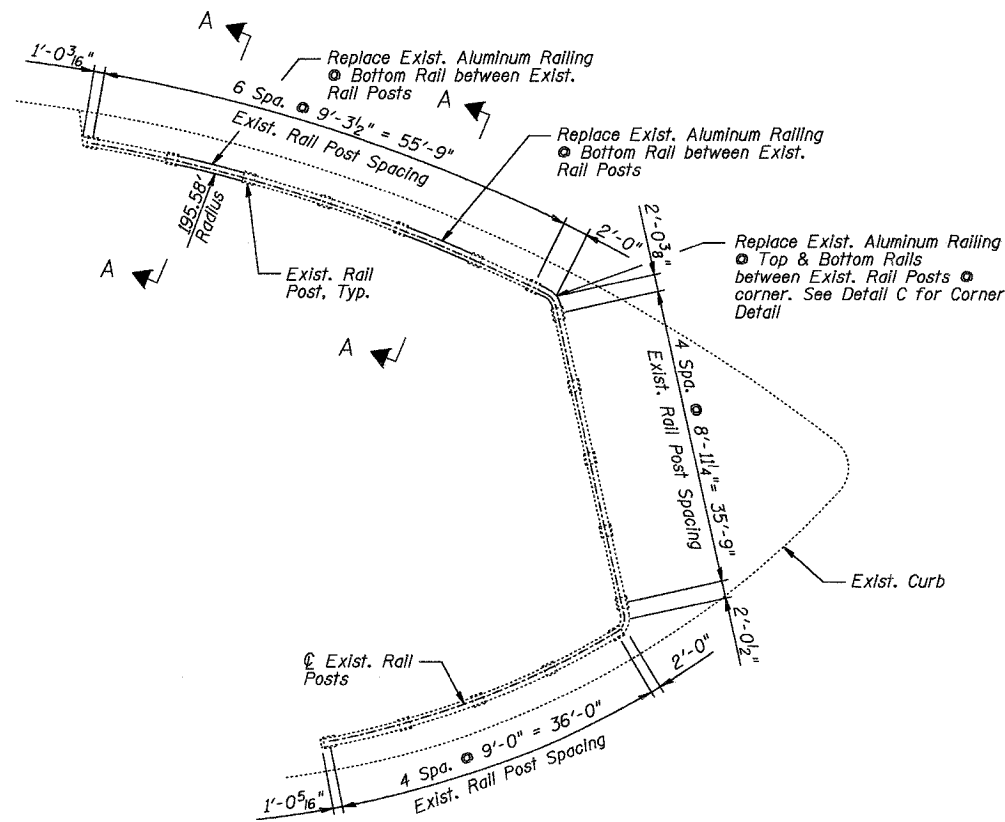


RAIL POST DETAILS



DETAIL C



EXISTING NORTH RAILING PLAN

Notes:

Outside diameter and thickness of Aluminum Railing shall match existing aluminum railing. Prior to ordering any material, Contractor shall verify in the field all necessary dimensions.

All Aluminum Railing shall be according to Article 1006.30 of the Standard Specifications.

The contract unit price per lineal foot for Aluminum Railing, Special shall include the removal of existing railing specified and the furnishing, fabrication, transportation, and erection of all new railing.

Set screws shall be of Aluminum conforming to ASTM Specification B-211 alloy 2024-T4.

BILL OF MATERIAL

Item	Unit	Total
Aluminum Railing, Special	Foot	26

DESIGNED	S.D.H.
CHECKED	J.A.Z.
DRAWN	M.S.M.
CHECKED	S.D.H.

ALUMINUM RAILING REPAIR
 FAP 541 (GRAND AVE.) OVER
 IL RTE. 137 (AMSTUTZ EXPY.)
 SECTION 9 HB-1-1
 LAKE COUNTY
 STATION 6+46.04
 S.N. 049-0118
 DATE: 03-27-08
 GRAEF, ANHALT, SCHLOEMER & ASSOCIATES INC
 CHICAGO ILLINOIS