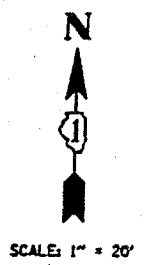
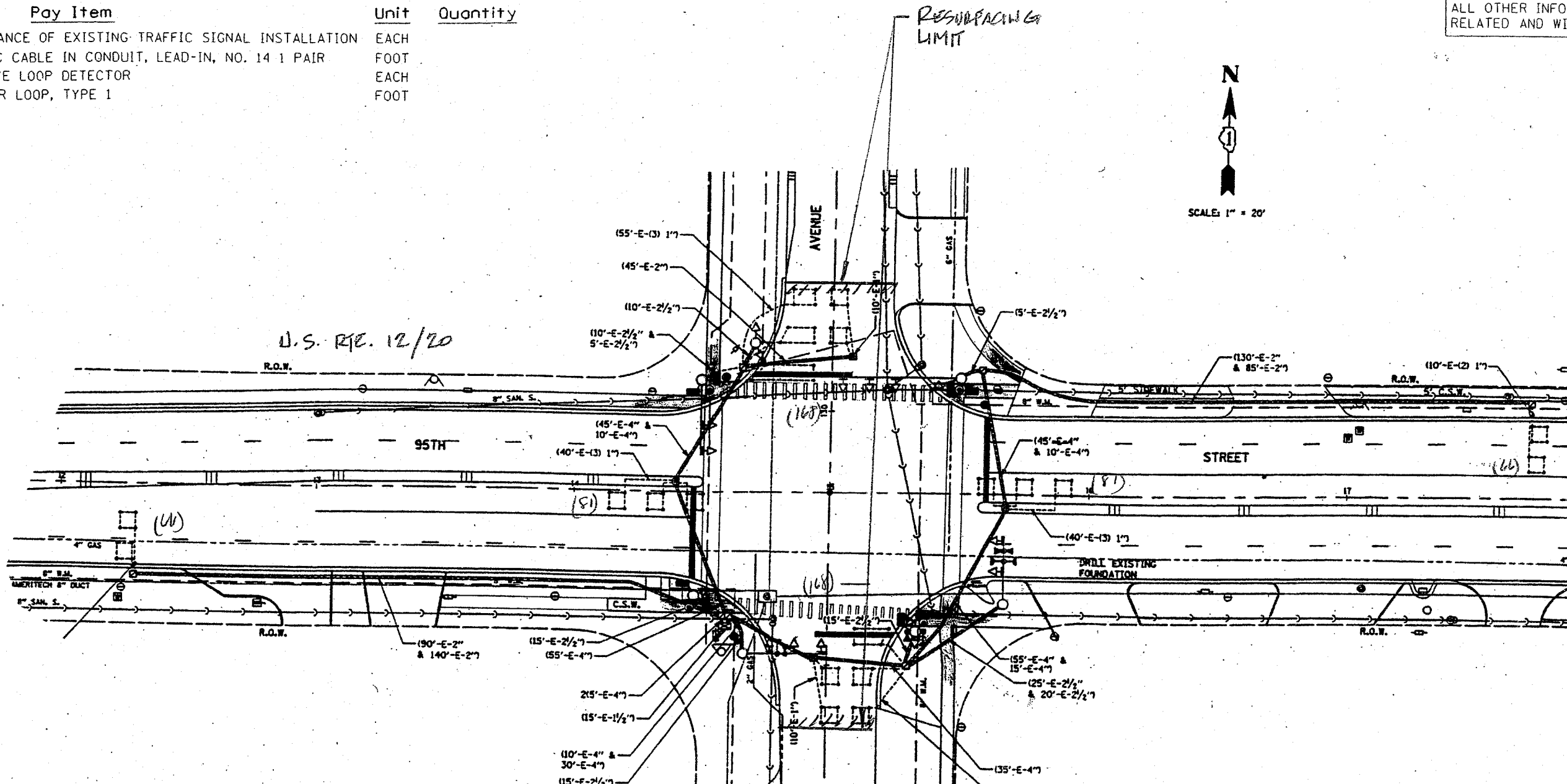


The "Pay Items" below are paid separately as per the attached "Specification" for MAGNETIC DETECTOR REMOVAL AND DETECTOR LOOP INSTALLATION.

Code No.	Pay Item	Unit	Quantity
85000200	MAINTENANCE OF EXISTING TRAFFIC SIGNAL INSTALLATION	EACH	
87301305	ELECTRIC CABLE IN CONDUIT, LEAD-IN, NO. 14 1 PAIR	FOOT	
88500100	INDUCTIVE LOOP DETECTOR	EACH	
88600100	DETECTOR LOOP, TYPE 1	FOOT	

NOTE:
THIS PLAN IS FOR THE PURPOSE OF REPLACING THE DETECTOR LOOPS ONLY. ALL OTHER INFORMATION SHOWN IS NOT RELATED AND WILL BE DISREGARDED.



TRAFFIC SIGNAL LEGEND

		- CONTROLLER
		- SERVICE INSTALLATION
		- SIGNAL HEAD
		- SIGNAL HEAD WITH BACKPLATE
		- SIGNAL HEAD, PEDESTRIAN
		- SIGNAL POST
		- MAST ARM ASSEMBLY AND POLE, STEEL
		- MAST ARM ASSEMBLY AND POLE, ALUMINUM
		- COMMON TRENCH
		- UNIT DUCT
		- HANDHOLE
		- HEAVY DUTY HANDHOLE
		- DOUBLE HANDHOLE
		- G.S. CONDUIT IN TRENCH OR PUSHED
		- PEDESTRIAN PUSHBUTTON DETECTOR
		- DETECTOR LOOP
		- CAST IRON JUNCTION BOX
		- EMERGENCY VEHICLE SYSTEM DETECTOR
		- CONFIRMATION BEACON
		- SIGNAL HEAD OPTICALLY PROGRAMMED
		- CONDUIT SPLICE
		- WOOD POLE
		- RACEWAY FOR MAGNETIC DETECTOR, TYPE I OR TYPE II
		- VEHICLE DETECTOR, NON COMPENSATED MAGNETIC TYPE
		- RAILROAD CONTROL CABINET

REPLACE ALL DETECTOR LOOPS AS SHOWN
(WITHIN THE RESURFACING LIMITS)

CODE NO.	QUANTITY	UNIT	ITEM
86600600	630	FOOT	DETECTOR LOOP REPLACEMENT

1070027\12.20.15.dgn 2/29/2008 1:37:00 PM User:konthophkybc