

F.A.P. RTE.	SECTION	COUNTY	TOTAL SHEETS	SHEET NO.
029	2008-019RS	COOK	54	1
FED. ROAD DIST. NO. 1	ILLINOIS	CONTRACT NO. 60D96		

541-55

STATE OF ILLINOIS  
DEPARTMENT OF TRANSPORTATION  
DIVISION OF HIGHWAYS

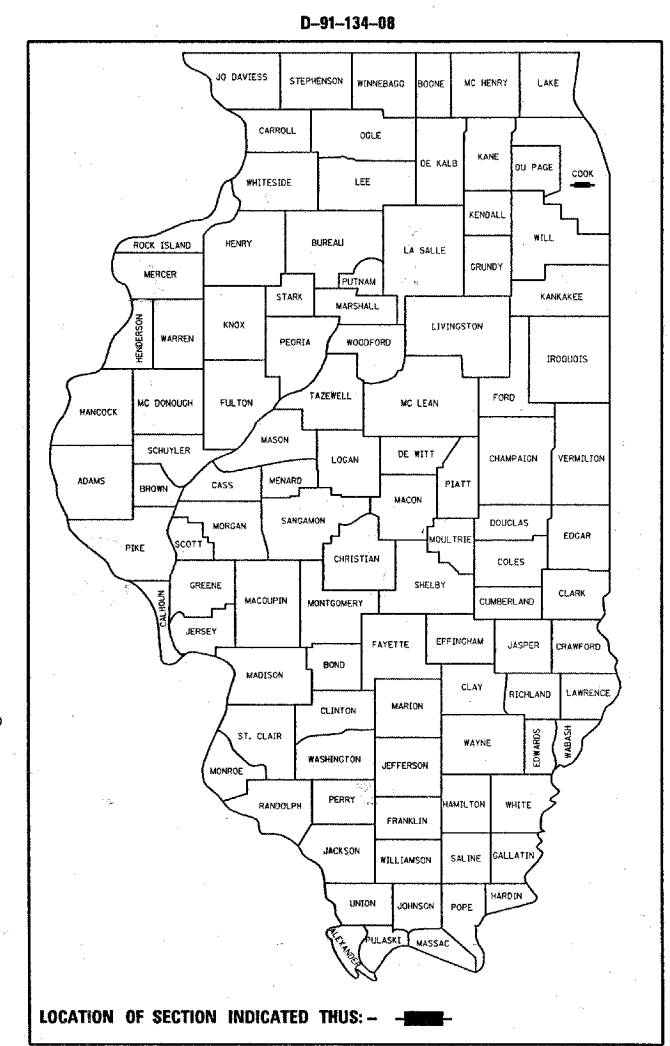
# PROPOSED HIGHWAY PLANS

F.A.P. ROUTE 029: US 12/20 (95TH ST.)  
I-294 TO WESTERN AVE.

SECTION: 2008-019RS  
RESURFACING (MAINTENANCE)  
PROJECT: ACNHF-0029(112)  
COOK COUNTY  
C-91-134-08

FOR INDEX OF SHEETS, SEE SHEET NO. 2

PROJECT LOCATED IN THE CITY OF BRIDGEVIEW AND THE VILLAGES OF OAK LAWN & EVERGREEN PARK



NOTE: WHEREVER IN THESE PLANS REFERENCE IS MADE TO "SECTION 3239 (B-X & C) Z-RS-1" IT SHALL MEAN "SECTION 2008-019RS"

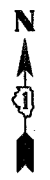
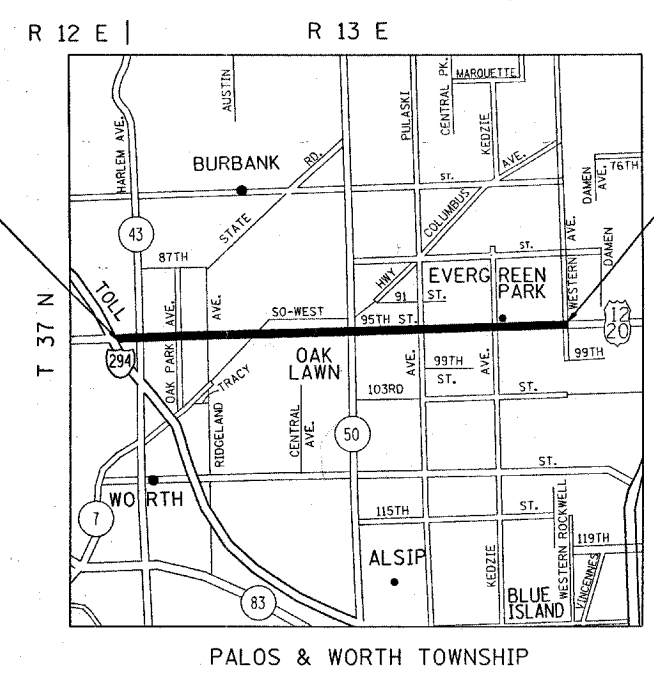
STATION EQUATION:  
BACK STA. 186+36 =  
STA. 0+00 AHEAD

PROJECT BEGINS:  
STATION: 151+10

PROJECT ENDS:  
STATION: 297+74

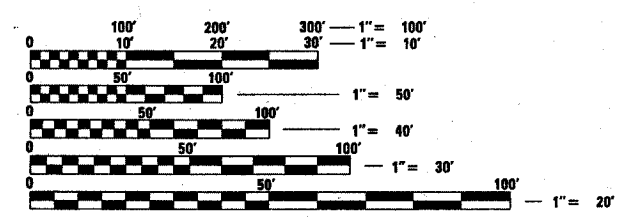
RAILROAD OMISSIONS:  
STA. 118+03 TO STA. 118+51  
STA. 247+94 TO STA. 248+21  
STA. 283+81 TO STA. 284+03

RESURFACING OMISSIONS:  
STA. 190+65 TO STA. 190+74  
STA. 214+14 TO STA. 214+23  
STA. 214+72 TO STA. 214+81  
STA. 229+80 TO STA. 229+89  
STA. 230+40 TO STA. 230+49  
STA. 242+88 TO STA. 242+97  
STA. 243+97 TO STA. 244+06  
STA. 253+27 TO STA. 253+36  
STA. 253+84 TO STA. 253+93  
STA. 270+08 TO STA. 270+17  
STA. 270+80 TO STA. 270+89  
STA. 290+27 TO STA. 290+36  
STA. 290+94 TO STA. 291+03  
STA. 296+91 TO STA. 297+00



TRAFFIC DATA  
2005 ADT = 58,500  
SPEED LIMIT = 30-45 MPH

GROSS LENGTH OF IMPROVEMENT = 33,301 FEET = 6.31 MILES  
NET LENGTH OF IMPROVEMENT = 33,078 FEET = 6.26 MILES



FULL SIZE PLANS HAVE BEEN PREPARED USING STANDARD ENGINEERING SCALES. REDUCED SIZED PLANS WILL NOT CONFORM TO STANDARD SCALES. IN MAKING MEASUREMENTS ON REDUCED PLANS, THE ABOVE SCALES MAY BE USED.

J.U.L.I.E.  
JOINT UTILITY LOCATION INFORMATION FOR EXCAVATION  
1-800-892-0123  
OR 811

PROJECT ENGINEER: JENPAI CHANG (847) 705-4432  
PROJECT MANAGER: KEN ENG  
CONTRACT NO. 60D96

STATE OF ILLINOIS  
DEPARTMENT OF TRANSPORTATION  
DIVISION OF HIGHWAYS

SUBMITTED MARCH 31, 2008

Diana M. O'Keefe  
DEPUTY DIRECTOR OF HIGHWAYS, REGION ENGINEER

May 9, 2008  
Eric E. Jaramal  
ENGINEER OF DESIGN AND ENVIRONMENT

May 9, 2008  
Christine M. Reed  
DIRECTOR OF HIGHWAYS, CHIEF ENGINEER

PRINTED BY THE AUTHORITY  
OF THE STATE OF ILLINOIS