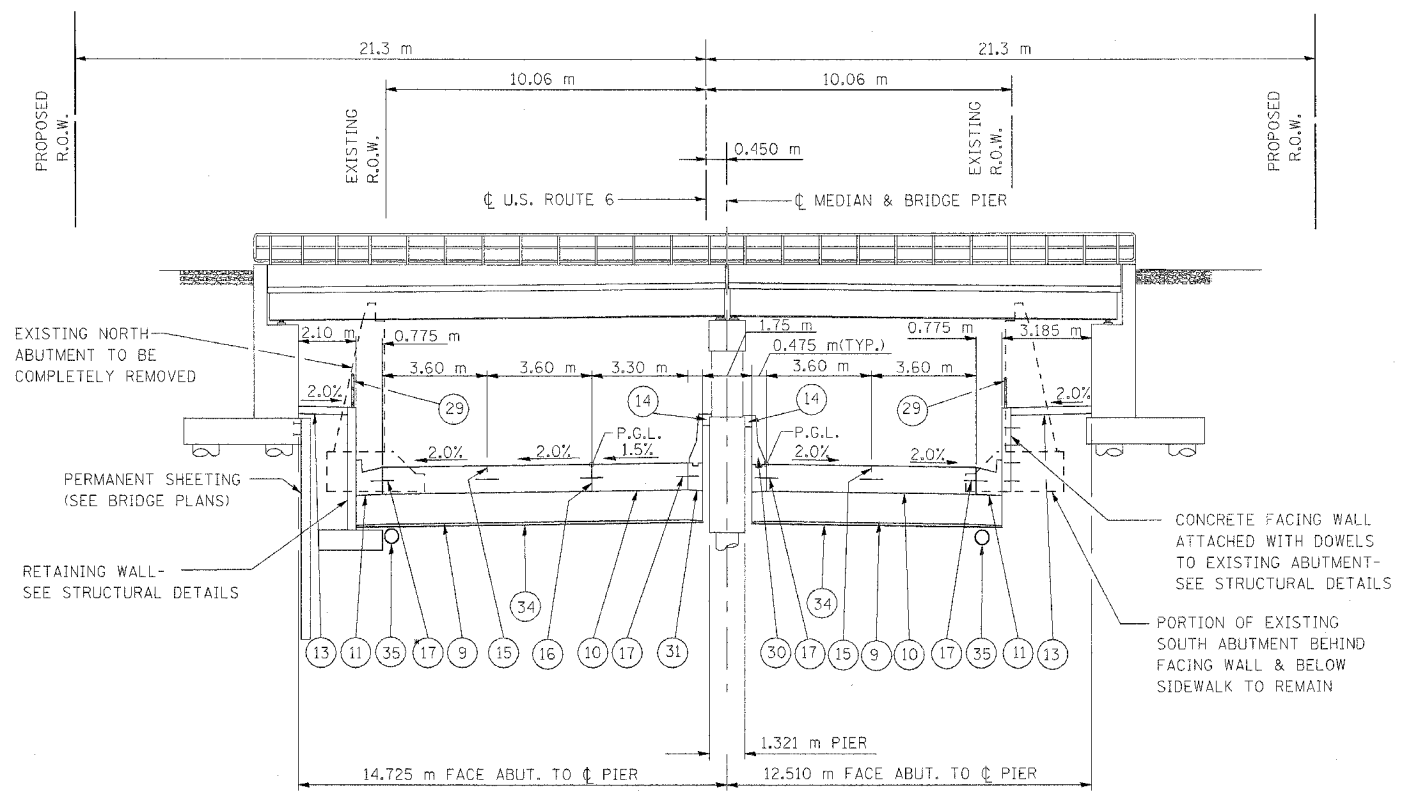


F.A.P. RTE.	SECTION	COUNTY	TOTAL SHEETS	SHEET NO.
351	2008-001VB	COOK	579	29
STA.	TO STA.			
FED. ROAD DIST. NO.	ILLINOIS	FED. AID PROJECT		
CONTRACT NO. 60E10				



DETAILS @ N. SIDE ARE FROM
 STA. 2+775.088 - 2+800.215
 (STA. 91+04.60 - STA. 91+87.04)

DETAILS @ MEDIAN ARE FROM
 STA. 2+769.519 - STA. 2+793.751
 (STA. 90+86.33 - STA. 91+65.83)

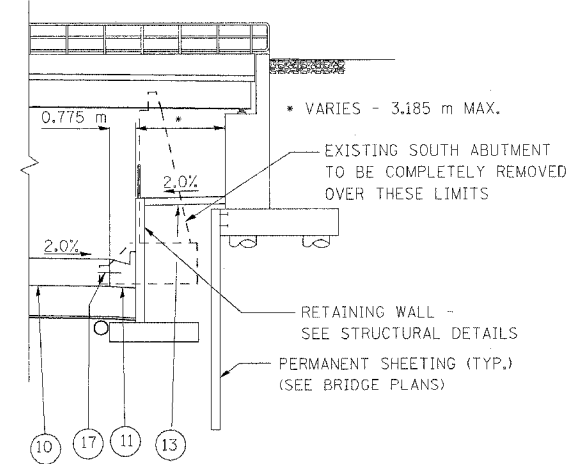
DETAILS @ S. SIDE ARE FROM
 STA. 2+785.664 - 2+788.599
 (STA. 91+39.30 - STA. 91+48.93)

US ROUTE 6 (159TH STREET) AT STRUCTURE NO. 016-2755

NOTE: ENGLISH STATIONING IS ALSO PROVIDED IN PARENTHESES FOR USE IN CORRELATING WITH STRUCTURE PLANS FOR BRIDGES AND RETAINING WALLS

LEGEND - PROPOSED

- 9 AGGREGATE SUBGRADE, 300 mm
- 10 PORTLAND CEMENT CEMENT PAVEMENT 260 mm (JOINTED)
- 11 COMBINATION CONCRETE CURB AND GUTTER, TYPE B-15.60
- 13 PORTLAND CEMENT CONCRETE SIDEWALK 125 mm
- 14 CONCRETE MEDIAN SURFACE, 150 mm
- 15 SAWED LONGITUDINAL JOINT WITH 750 mm DEFORMED EPOXY-COATED No. 19 TIE BARS @ 750mm CTS.
- 16 LONGITUDINAL CONSTRUCTION JOINT WITH 600 mm GROUTED IN PLACE DEFORMED EPOXY-COATED No. 19 TIE BARS @ 600 mm CTS.
- 17 600 mm DEFORMED EPOXY-COATED No. 19 TIE BARS @ 600 mm CTS.
- 29 BICYCLE RAILING
- 30 CONCRETE BARRIER, SINGLE FACE, 1065 mm HEIGHT (TRANSITION TOP OF BARRIER BETWEEN CONSTANT HEIGHT CRASHWALLS OF ADJACENT BRIDGE PIERS)
- 31 BARRIER BASE
- 34 FILTER FABRIC
- 35 PIPE UNDERDRAINS 100 mm



ALTERNATE DETAILS AT S. SIDE FROM
 STA. 2+763.990 - 2+785.664
 (STA. 90+68.19 - STA. 91+39.30)

REVISIONS	
NAME	DATE