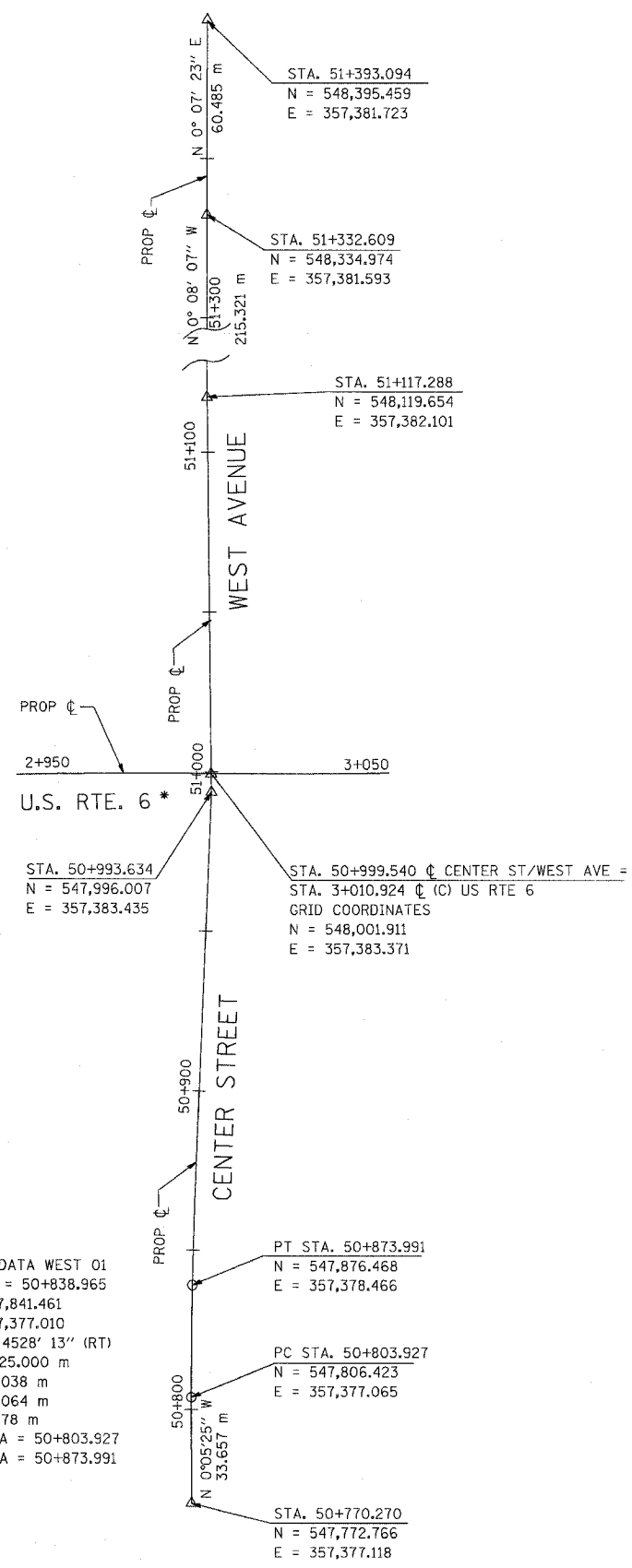
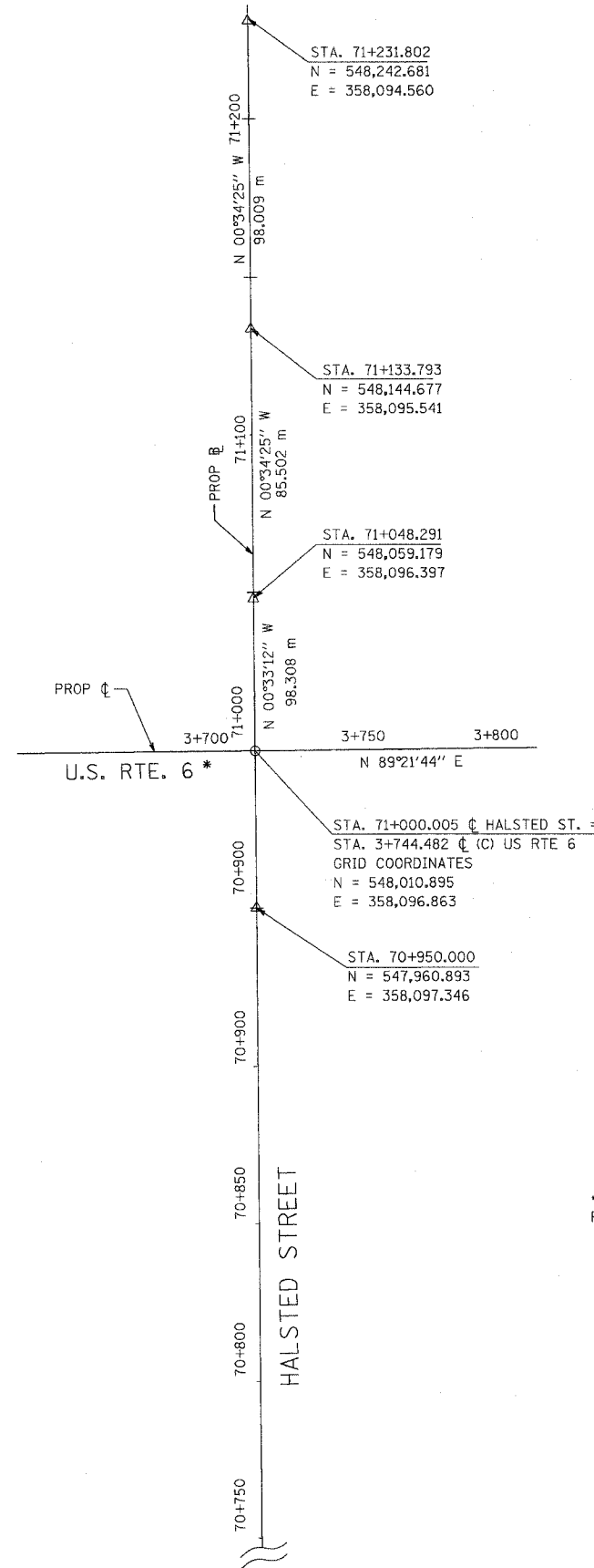


F.A.P. RTE.	SECTION	COUNTY	TOTAL SHEETS	SHEET NO.
351	2008-001VB	COOK	579	43
STA.		TO STA.		
FED. ROAD DIST. NO.		ILLINOIS	FED. AID PROJECT	
CONTRACT NO. 60E10				



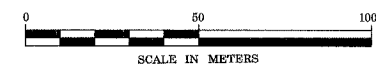
CURVE DATA WEST 01
 PI STA = 50+838.965
 N = 547,841.461
 E = 357,377.010
 $\Delta = 2^\circ 45' 28'' 13''$ (RT)
 R = 1,625.000 m
 T = 35.038 m
 L = 70.064 m
 E = 0.378 m
 P.C. STA = 50+803.927
 P.T. STA = 50+873.991



* EXTENSION BEYOND IMPROVEMENT LIMITS FOR REFERENCE PURPOSES ONLY.

NOTE: SURVEY LINE (SL) STATIONING AT GROUND
 CONSTRUCTION LINE (C) STATIONING AT GRID.

FOR BENCHMARK DATA SEE SHEET NO. 32



REVISIONS	
NAME	DATE

ILLINOIS DEPARTMENT OF TRANSPORTATION
 US RTE 6 FROM LEXINGTON AVE TO FISK AVE
 ALIGNMENT, TIES AND BENCHMARKS
 CENTER ST. / WEST AVE.
 AND HALSTED ST.
 AT-06 DRAWN BY VAP
 DATE 02/21/08 CHECKED BY NAP