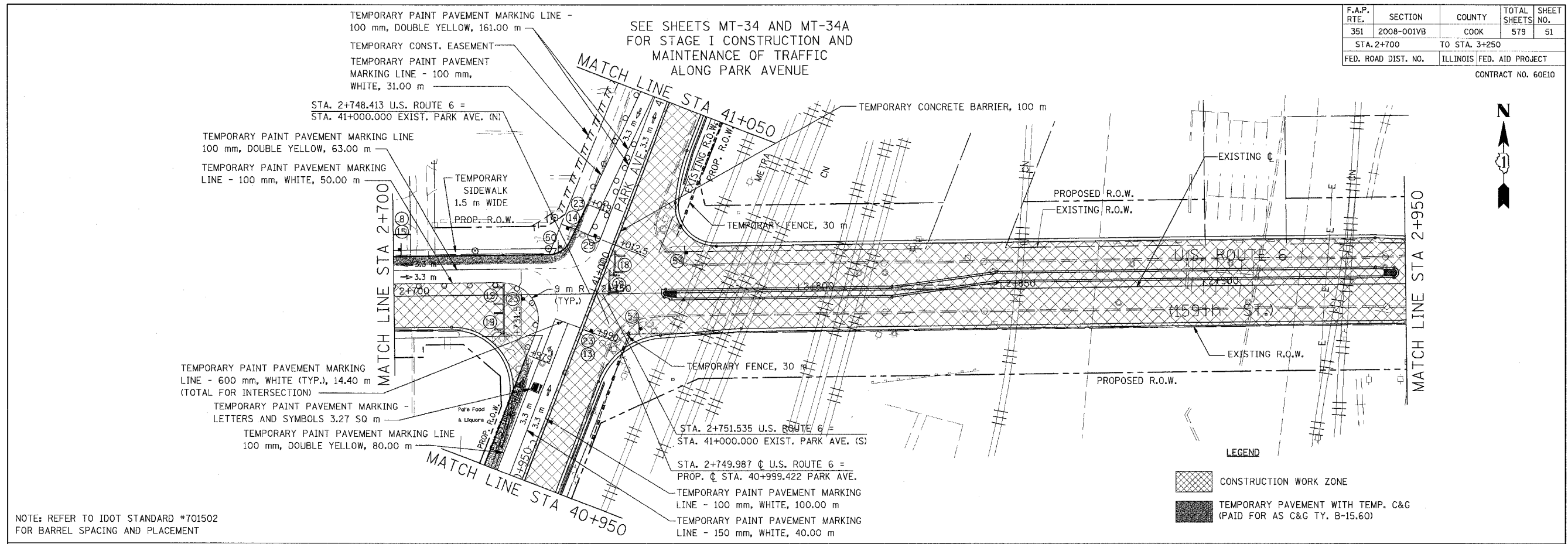
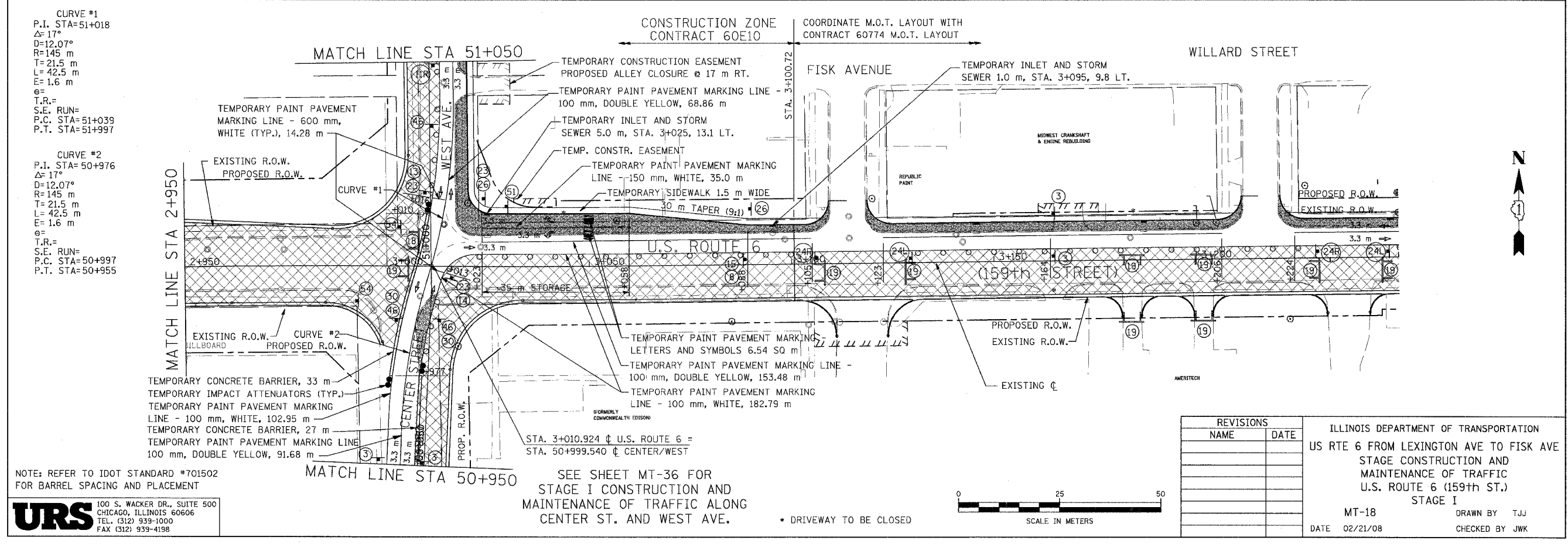


F.A.P. RTE.	SECTION	COUNTY	TOTAL SHEETS	SHEET NO.
351	2008-001VB	COOK	579	51
STA. 2+700		TO STA. 3+250		
FED. ROAD DIST. NO.		ILLINOIS FED. AID PROJECT		

CONTRACT NO. 60E10



NOTE: REFER TO IDOT STANDARD #701502 FOR BARREL SPACING AND PLACEMENT



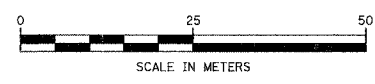
CURVE #1
P.I. STA=51+018
 $\Delta=17^\circ$
R=145 m
T=21.5 m
L=42.5 m
E=1.6 m
e=
T.R.=
S.E. RUN=
P.C. STA=51+039
P.T. STA=51+997

CURVE #2
P.I. STA=50+976
 $\Delta=17^\circ$
R=145 m
T=21.5 m
L=42.5 m
E=1.6 m
e=
T.R.=
S.E. RUN=
P.C. STA=50+997
P.T. STA=50+955

NOTE: REFER TO IDOT STANDARD #701502 FOR BARREL SPACING AND PLACEMENT

URS 100 S. WACKER DR., SUITE 500
CHICAGO, ILLINOIS 60606
TEL. (312) 939-1000
FAX (312) 939-4198

SEE SHEET MT-36 FOR STAGE I CONSTRUCTION AND MAINTENANCE OF TRAFFIC ALONG CENTER ST. AND WEST AVE. • DRIVEWAY TO BE CLOSED



REVISIONS	
NAME	DATE

ILLINOIS DEPARTMENT OF TRANSPORTATION
US RTE 6 FROM LEXINGTON AVE TO FISK AVE
STAGE CONSTRUCTION AND MAINTENANCE OF TRAFFIC
U.S. ROUTE 6 (159th ST.)
STAGE I
MT-18 DRAWN BY TJJ
DATE 02/21/08 CHECKED BY JWJ