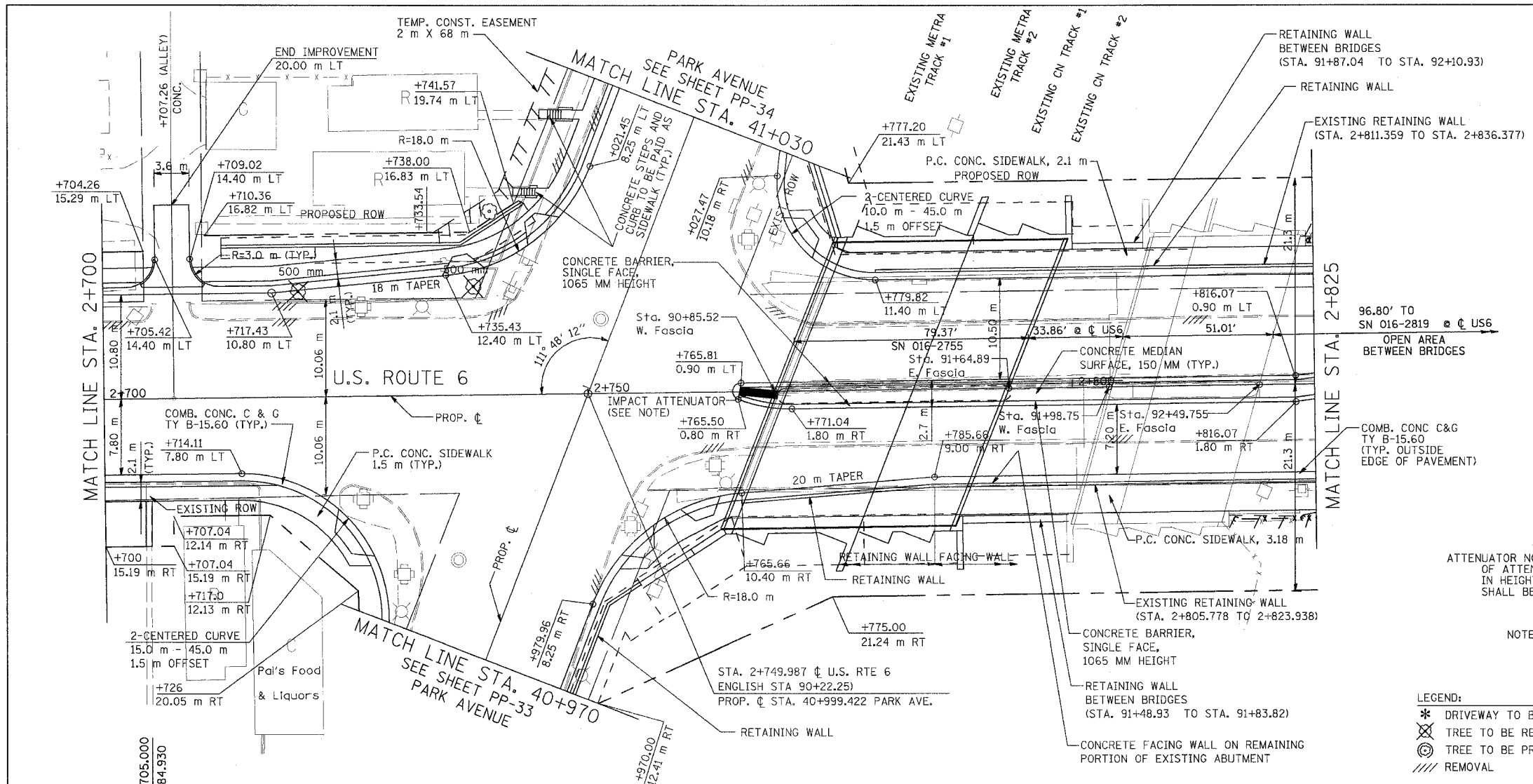


F.A.P. RTE.	SECTION	COUNTY	TOTAL SHEETS	SHEET NO.
351	2008-001VB	COOK	579	61
STA. 2+700		TO STA. 2+825		
FED. ROAD DIST. NO.		ILLINOIS FED. AID PROJECT		
CONTRACT NO. 60E10				



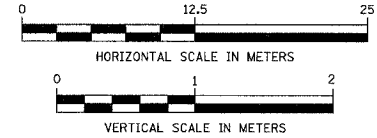
FINAL SURVEY PLOTTED	DATE
NOTE BOOK TEMPLATE	BY
AREAS CHECKED	
NO.	



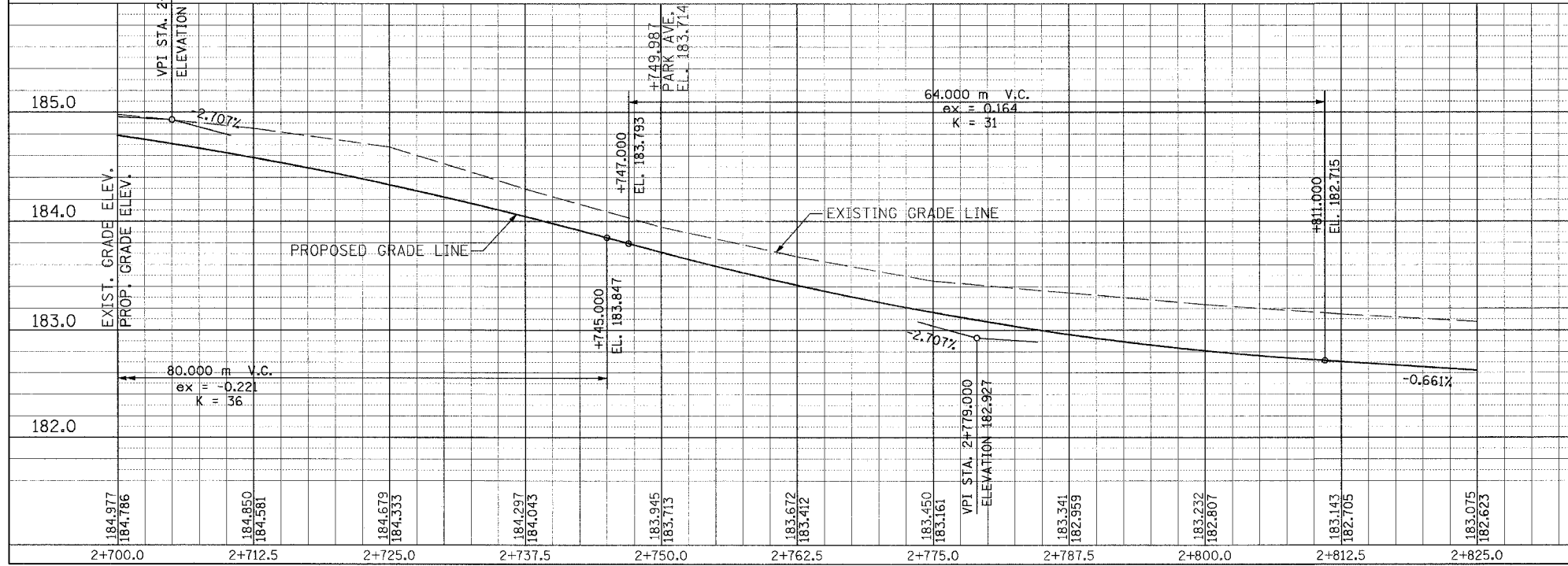
ATTENUATOR NOTE: CURB LOCATED AROUND ENTIRE LENGTH OF ATTENUATOR SHALL BE DEPRESSED TO 37.5MM (1.5-INCHES) IN HEIGHT. CONCRETE MEDIAN LOCATED AT THE ATTENUATOR SHALL BE PAVED FLAT FOR THE ATTENUATOR INSTALLATION.

NOTE: INFORMATION PROVIDED FOR BRIDGE WIDTHS AND WEST FASCIA STATIONS (IN ENGLISH UNITS) FOR USE IN CORRELATING WITH STRUCTURE PLANS

- LEGEND:
- * DRIVEWAY TO BE CLOSED
 - ⊗ TREE TO BE REPLACED
 - ⊙ TREE TO BE PROTECTED
 - /// REMOVAL



ORIGINAL SURVEY PLOTTED	DATE
NOTE BOOK TEMPLATE	BY
AREAS CHECKED	
NO.	



REVISIONS	
NAME	DATE

ILLINOIS DEPARTMENT OF TRANSPORTATION
US RTE 6 FROM LEXINGTON AVE TO FISK AVE

PLAN AND PROFILE
STA. 2+700 TO STA. 2+825

PP-17 DRAWN BY VAP
DATE 02/21/08 CHECKED BY JRP