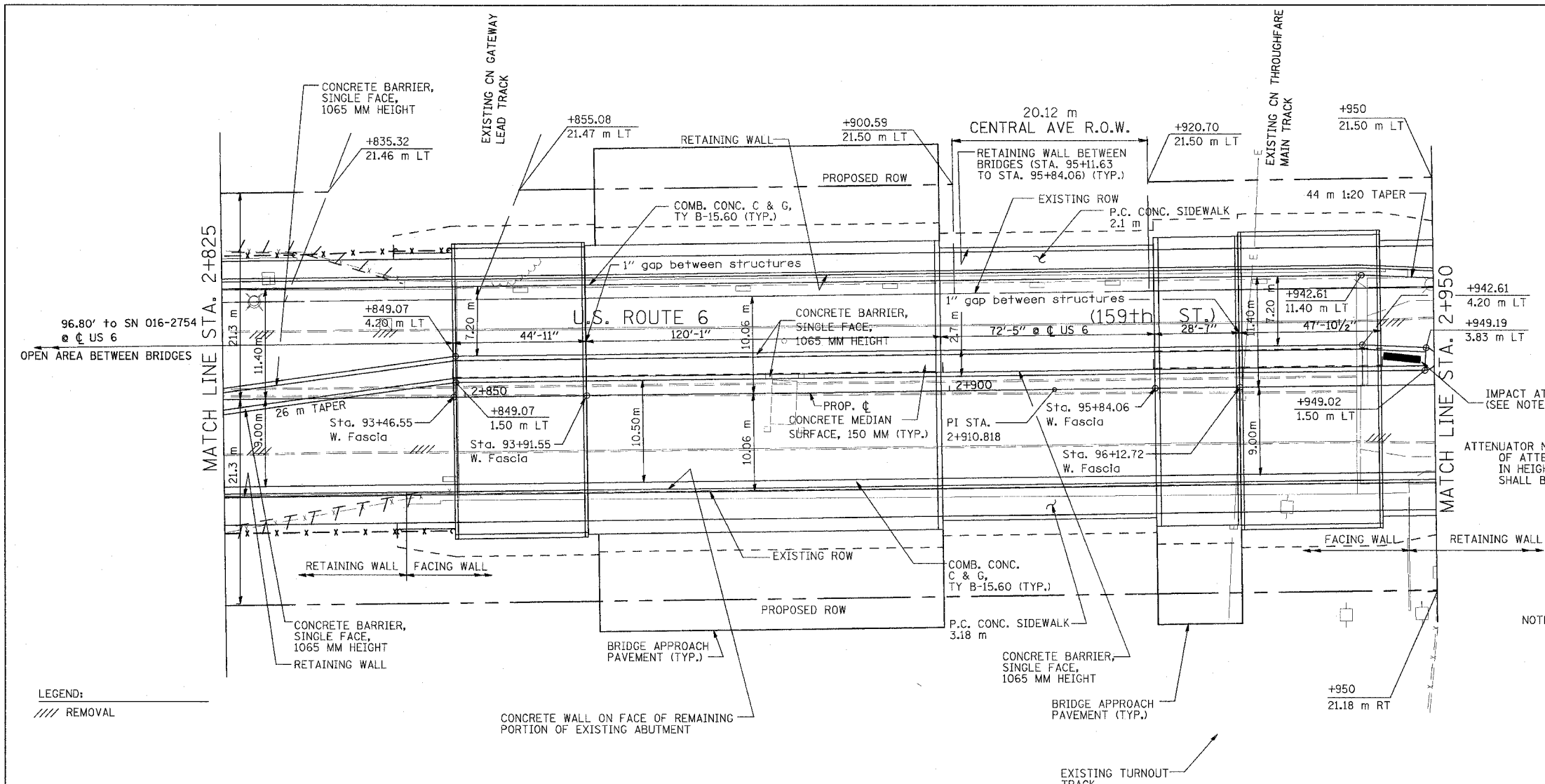


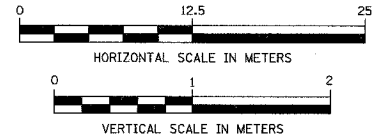
F.A.P. RTE.	SECTION	COUNTY	TOTAL SHEETS	SHEET NO.
351	2008-001VB	COOK	579	62
STA. 2+825		TO STA. 2+950		
FED. ROAD DIST. NO.		ILLINOIS FED. AID PROJECT		
CONTRACT NO. 60E10				

FINAL SURVEY PLOTTED	BY	DATE
NOTE BOOK TEMPLATE		
AREAS CHECKED		
NO.		

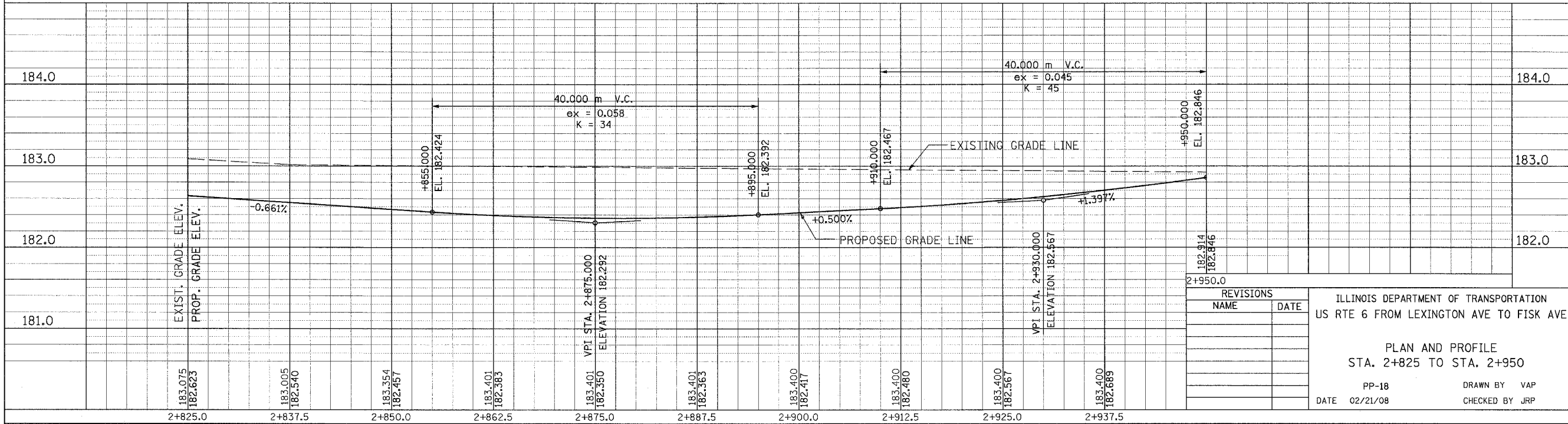


LEGEND:  
 // // REMOVAL

NOTE: INFORMATION PROVIDED FOR BRIDGE WIDTHS AND WEST FASCIA STATIONS (IN ENGLISH UNITS) FOR USE IN CORRELATING WITH STRUCTURE PLANS



ORIGINAL SURVEY PLOTTED	BY	DATE
NOTE BOOK TEMPLATE		
AREAS CHECKED		
NO.		



REVISIONS	
NAME	DATE

ILLINOIS DEPARTMENT OF TRANSPORTATION  
 US RTE 6 FROM LEXINGTON AVE TO FISK AVE  
 PLAN AND PROFILE  
 STA. 2+825 TO STA. 2+950  
 PP-18 DRAWN BY VAP  
 DATE 02/21/08 CHECKED BY JRP