



STS Consultants Ltd.  
Consulting Engineers  
STS PROJECT NO.: 32646

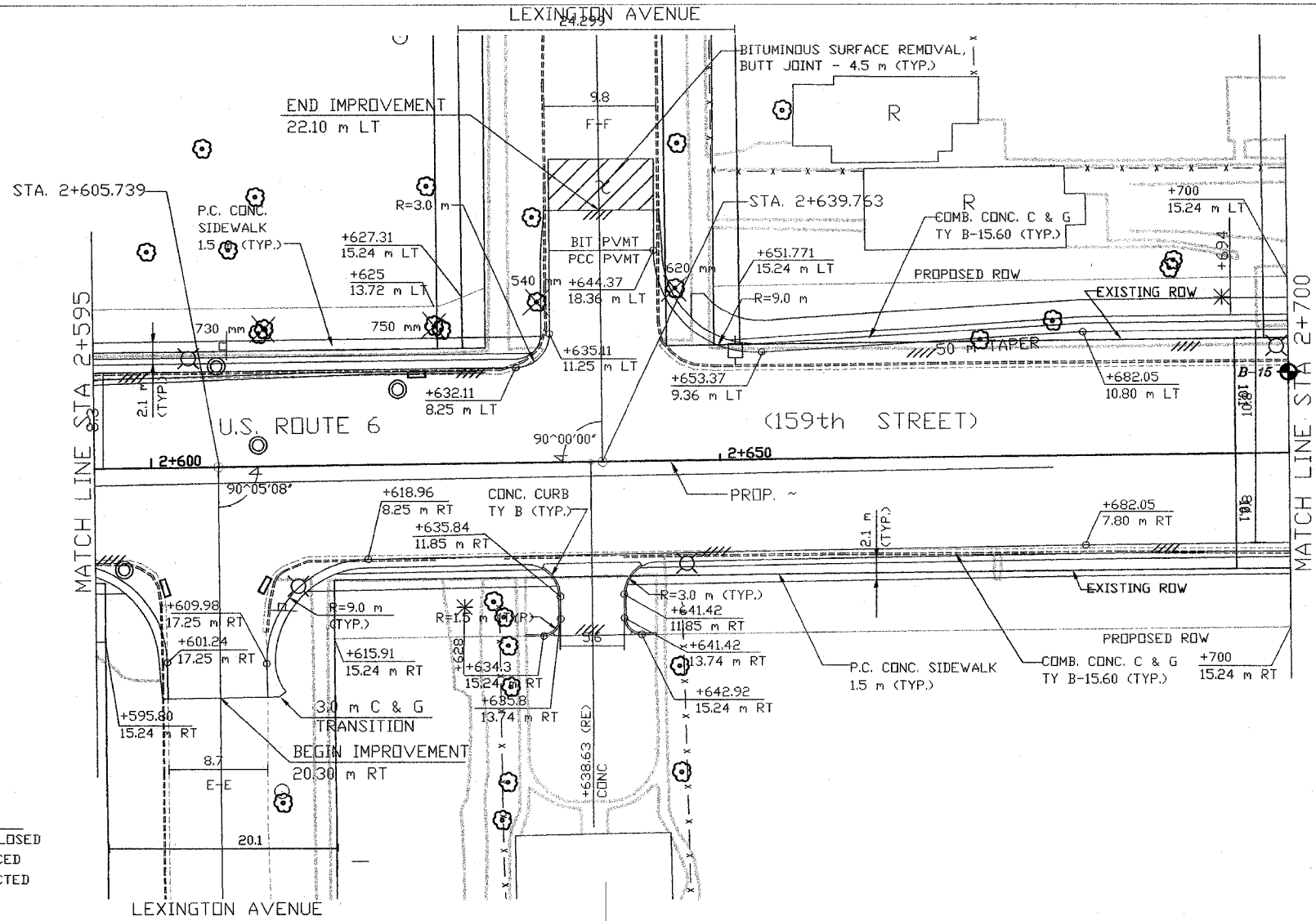
DRAWN BY	CJD	4-10-02
CHECKED BY	SEK	4-10-02
APPROVED BY	TDB	4-10-02

BY	DATE
FINAL SURVEYED	
SURVEY PLOTTED	
NOTE BOOK TEMPLATE	
AREAS CHECKED	
NO.	

BY	DATE
ORIGINAL SURVEYED	
SURVEY PLOTTED	
NOTE BOOK TEMPLATE	
AREAS CHECKED	
NO.	

X:\PROJECTS\122646\PROFILES  
22/05/2002 22:25  
04/09/2002 22:25

F.A. RTE.	SECTION	COUNTY	TOTAL SHEETS	SHEET NO.
351	3277R	COOK	579	108
STA. 2+595	TO STA. 2+700			
FED. ROAD DIST. NO.	ILLINOIS	FED. AID PROJECT		



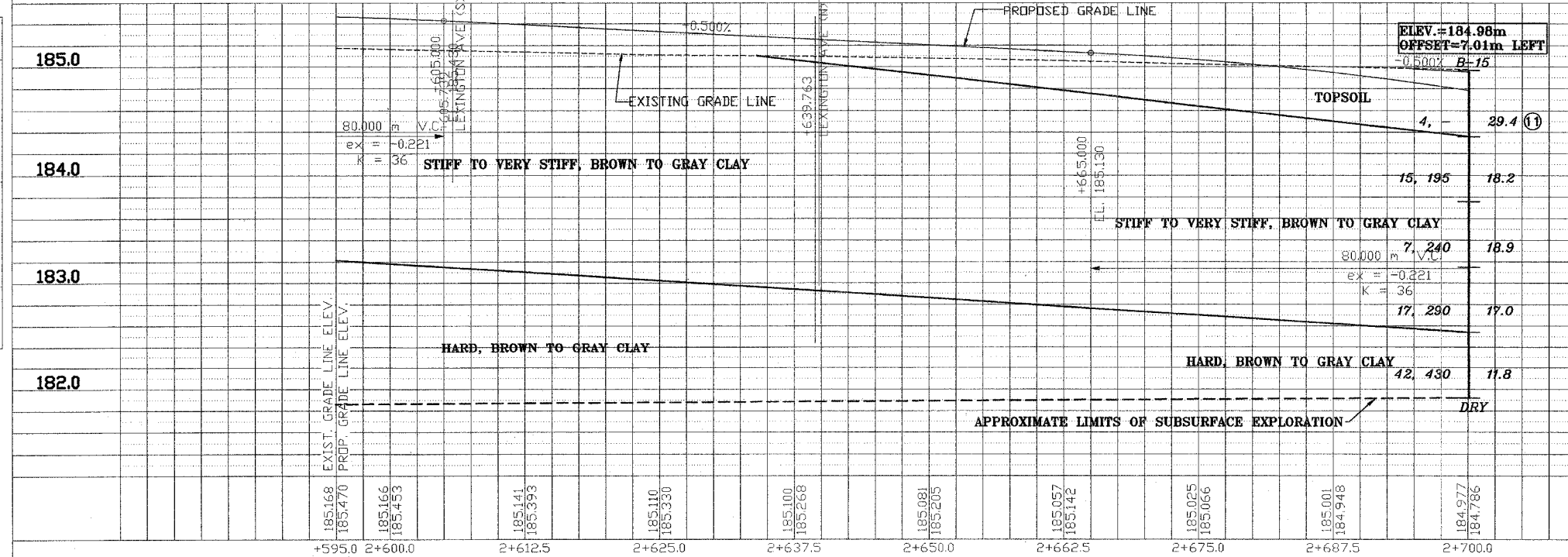
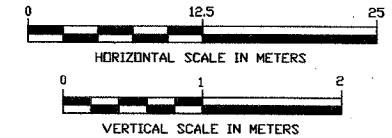
- LEGEND:
- DRIVEWAY TO BE CLOSED
  - TREE TO BE REPLACED
  - TREE TO BE PROTECTED
  - REMOVAL

- LEGEND
- B-43 BORING PERFORMED BY STS CONSULTANTS LTD. (FEB. 2002)
  - B-15 BORING NO.
  - N, Qp (kPa) 8, 175 22.1, 200 WATER CONTENT (%), Qu (kPa)
  - WATER LEVEL DURING DRILLING
  - DELATED WATER LEVEL
  - NOTE: DRY INDICATED IF GROUNDWATER NOT ENCOUNTERED

NOTE:

THE STRATA LINES SHOWN ARE INTERPOLATED FROM DATA OBTAINED AT BORING LOCATIONS. ACTUAL SOIL CONDITIONS IN-SITU MAY VARY.

- INDICATES ADDITIONAL LAB TESTING PERFORMED
- DEPTH (METERS)
- ISW CLASSIFICATION
- AASHTO CLASSIFICATION
- LIQUID LIMIT, LL (%)
- PLASTIC LIMIT, PL (%)
- TOTAL ORGANIC MATTER, (T.O.M.) (%)



REVISIONS	
NAME	DATE

ILLINOIS DEPARTMENT OF TRANSPORTATION  
US RTE 6 FROM I-294 TO IL RTE 1

PLAN AND PROFILE  
STA. 2+595 TO STA. 2+700

DATE 12/20/00  
DRAWN BY VAP  
CHECKED BY JRP