



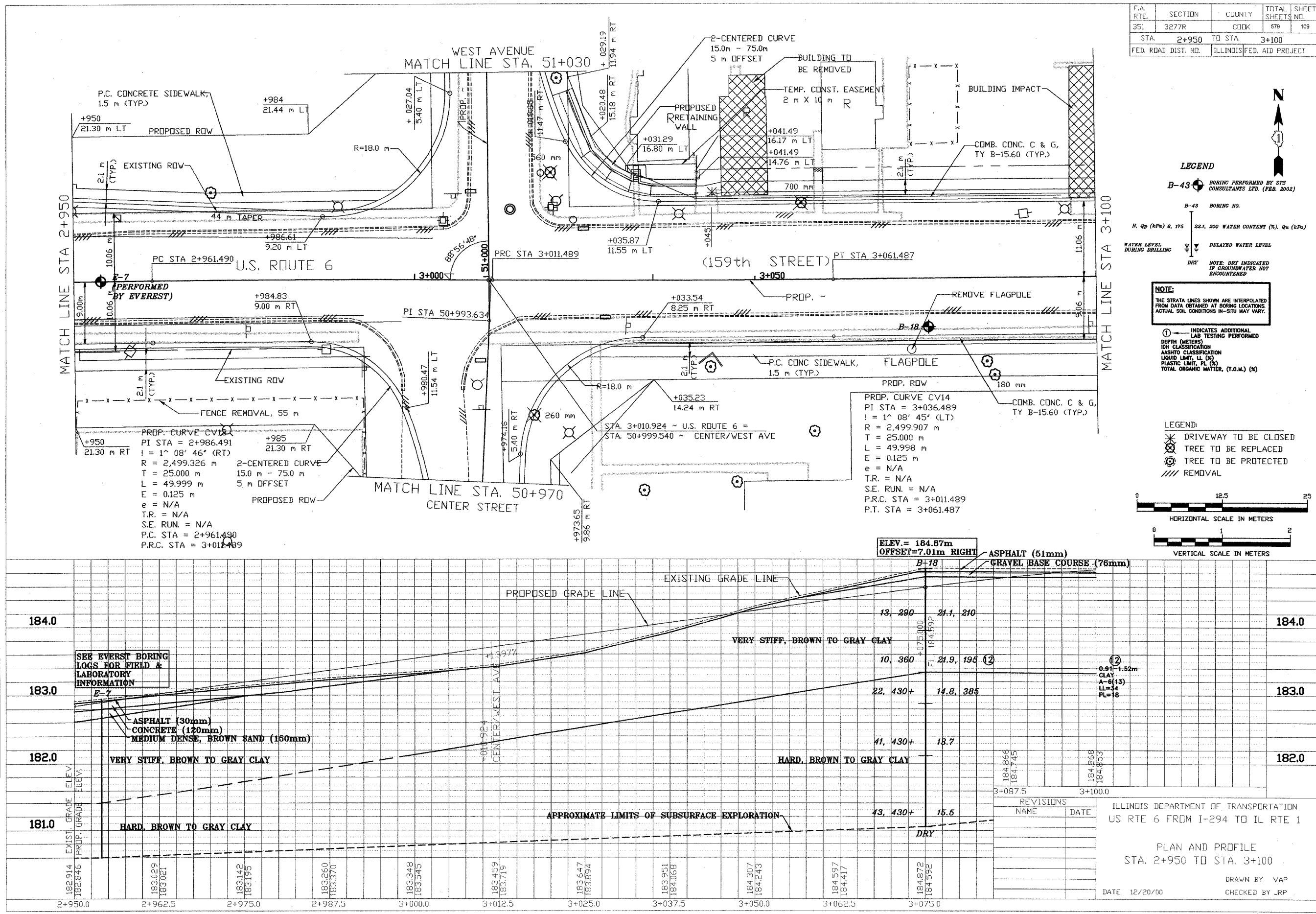
STS Consultants Ltd.
Consulting Engineers
STS PROJECT NO.: 32646

DRAWN BY	CJD	4-10-02
CHECKED BY	SEK	4-10-02
APPROVED BY	TDB	4-10-02

BY	DATE
FINAL SURVEYED	
SURVEY PLOTTED	
NOTE BOOK TEMPLATE	
AREAS CHECKED	
NO.	

BY	DATE
ORIGINAL SURVEYED	
SURVEY PLOTTED	
NOTE BOOK TEMPLATE	
AREAS CHECKED	
NO.	

X:\PROJECTS\32646\PROFILES
2-480-31-100.dwg
04/10/2002 14:34



F.A. RTE.	SECTION	COUNTY	TOTAL SHEETS	SHEET NO.
351	3277R	COOK	579	109

STA. 2+950 TO STA. 3+100
FED. ROAD DIST. NO. ILLINOIS FED. AID PROJECT

LEGEND

B-43 BORING PERFORMED BY STS CONSULTANTS LTD. (FEB. 2002)

B-43 BORING NO.

N, Qp (kPa) @ 175 22.1, 200 WATER CONTENT (%), Qu (kPa)

WATER LEVEL DURING DRILLING

DELAYED WATER LEVEL

DRY NOTE: DRY INDICATED IF GROUNDWATER NOT ENCOUNTERED

NOTE:

THE STRATA LINES SHOWN ARE INTERPOLATED FROM DATA OBTAINED AT BORING LOCATIONS. ACTUAL SOIL CONDITIONS IN-SITU MAY VARY.

① INDICATES ADDITIONAL LAB TESTING PERFORMED

DEPTH (METERS)

ISH CLASSIFICATION

AASHTO CLASSIFICATION

LIQUID LIMIT, LL (%)

PLASTIC LIMIT, PL (%)

TOTAL ORGANIC MATTER, (T.O.M.) (%)

LEGEND:

DRIVEWAY TO BE CLOSED

TREE TO BE REPLACED

TREE TO BE PROTECTED

REMOVAL

