



STS Consultants Ltd.
Consulting Engineers
STS PROJECT NO.: 32646

DRAWN BY	CJD	4-10-02
CHECKED BY	SEK	4-10-02
APPROVED BY	TDB	4-10-02

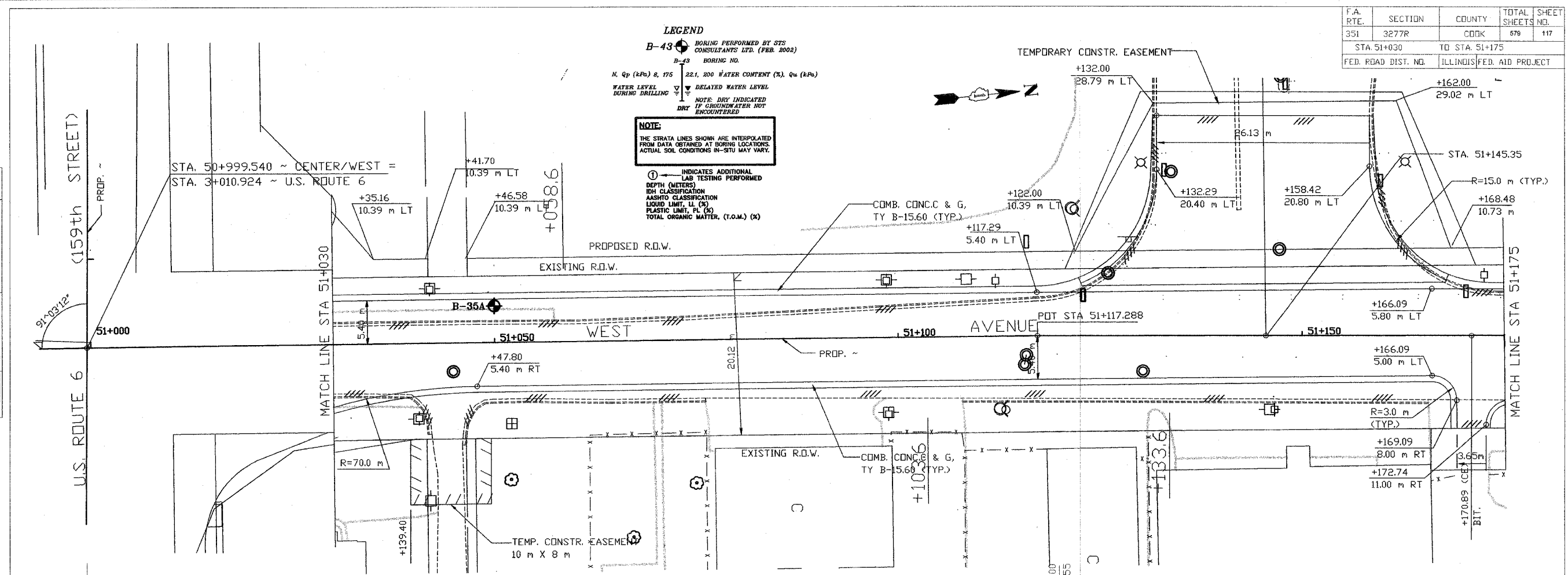
F.A. RTE.	SECTION	COUNTY	TOTAL SHEETS	SHEET NO.
351	3277R	COOK	579	117
STA 51+030		TO STA. 51+175		
FED. ROAD DIST. NO.		ILLINOIS FED. AID PROJECT		

LEGEND

- B-43 BORING PERFORMED BY STS CONSULTANTS LTD. (FEB. 2002)
- B-43 BORING NO.
- N, Qp (kPa) 8, 175 22.1, 200 WATER CONTENT (%), Q_u (kPa)
- WATER LEVEL DURING DRILLING
- DELATED WATER LEVEL
- NOTE: DRY INDICATED IF GROUNDWATER NOT ENCOUNTERED

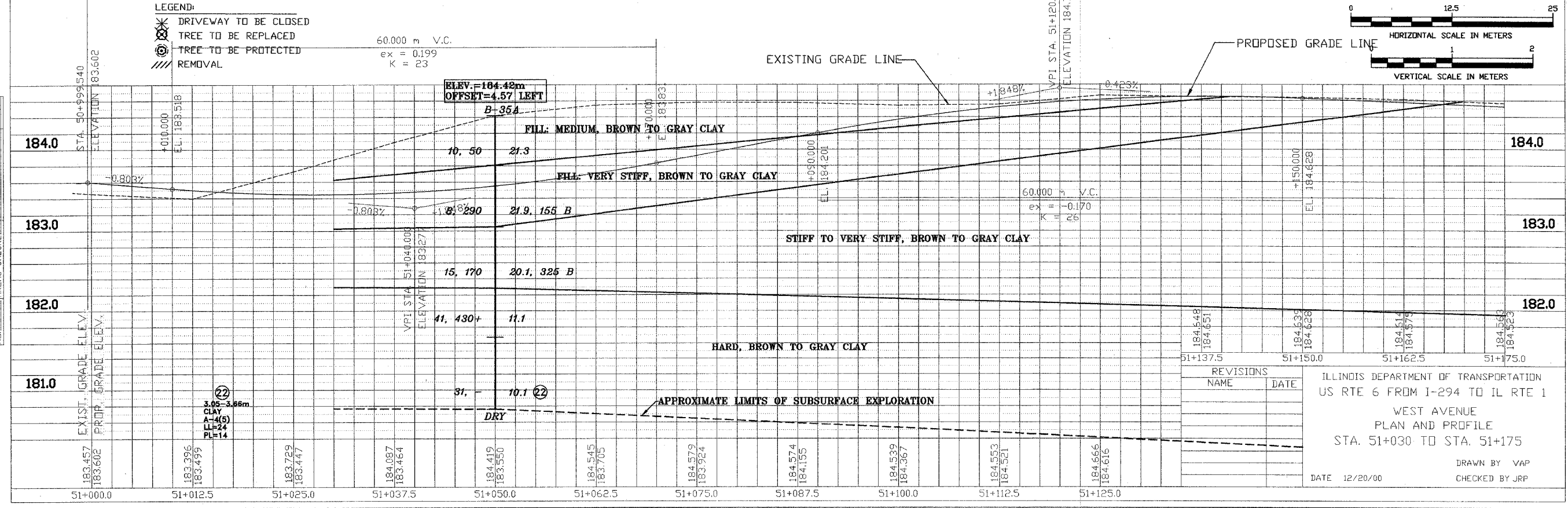
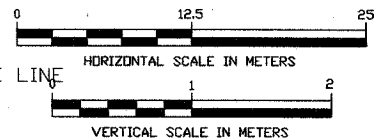
NOTE:
THE STRATA LINES SHOWN ARE INTERPOLATED FROM DATA OBTAINED AT BORING LOCATIONS. ACTUAL SOIL CONDITIONS IN-SITU MAY VARY.

- ① INDICATES ADDITIONAL LAB TESTING PERFORMED
- DEPTH (METERS)
- IDL CLASSIFICATION
- AASHTO CLASSIFICATION
- LIQUID LIMIT, LL (%)
- PLASTIC LIMIT, PL (%)
- TOTAL ORGANIC MATTER, (T.O.M.) (X)



- LEGEND:**
- DRIVEWAY TO BE CLOSED
 - TREE TO BE REPLACED
 - TREE TO BE PROTECTED
 - REMOVAL

60.000 m V.C.
ex = 0.199
K = 23



REVISIONS	NAME	DATE

ILLINOIS DEPARTMENT OF TRANSPORTATION
US RTE 6 FROM I-294 TO IL RTE 1
WEST AVENUE
PLAN AND PROFILE
STA. 51+030 TO STA. 51+175
DATE 12/20/00
DRAWN BY VAP
CHECKED BY JRP

FINAL SURVEYED	BY	DATE
SURVEY PLOTTED		
NOTE BOOK TEMPLATE		
AREAS CHECKED		
NO.		

ORIGINAL SURVEYED	BY	DATE
SURVEY PLOTTED		
NOTE BOOK TEMPLATE		
AREAS CHECKED		
NO.		

X:\PROJECTS\32646\PROFILES\51+030_51+175.dwg
04/10/2002 13:38