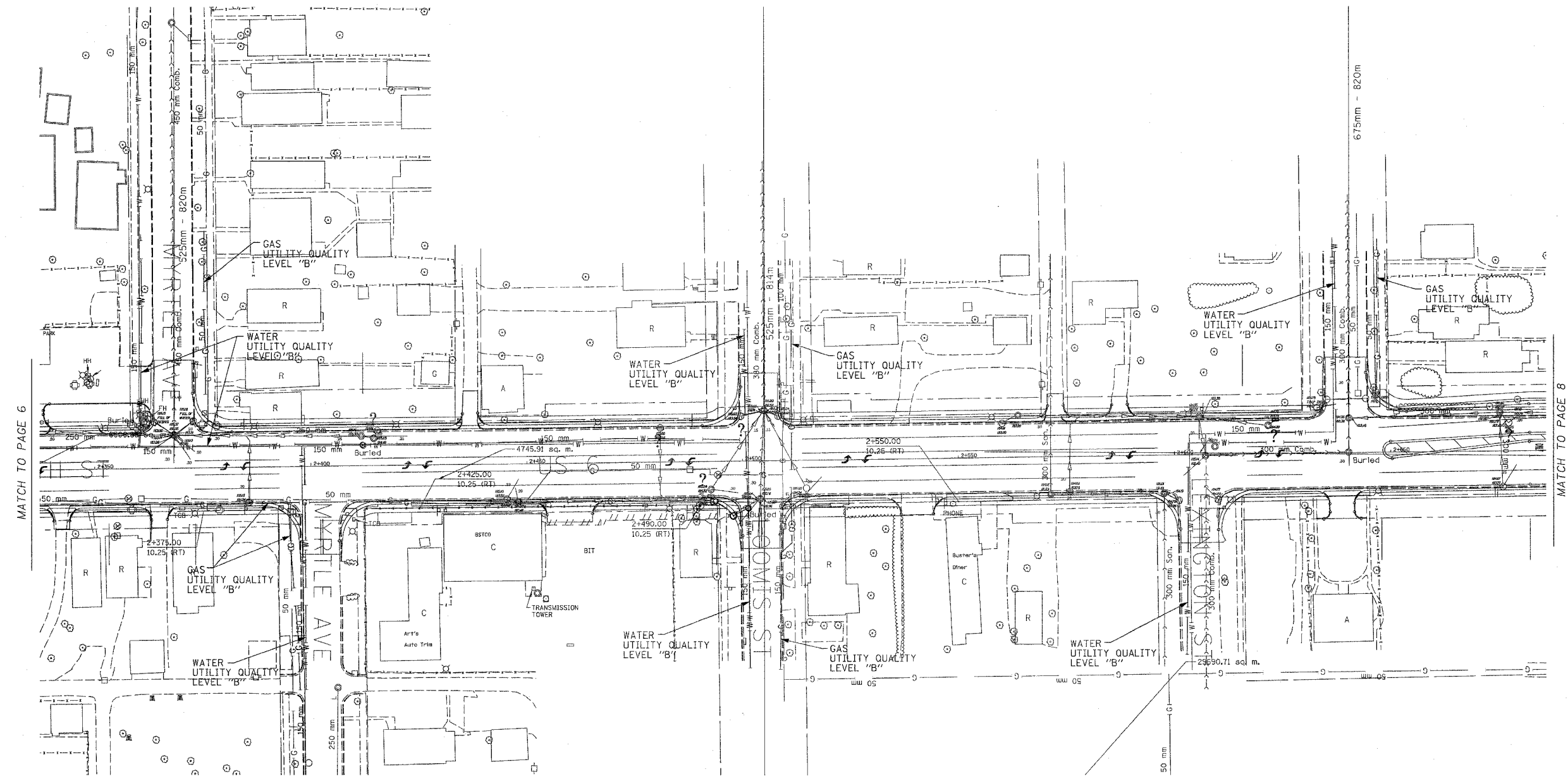
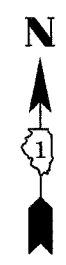


F.A.R. RTE.	SECTION	COUNTY	TOTAL SHEETS	SHEET NO.
351	3277R	Cook	579	119
STA. pg begin sta. TO STA. pg end sta.				
FED. ROAD DIST. NO.	ILLINOIS FED. AID PROJECT			



MATCH TO PAGE 6

MATCH TO PAGE 8

The SBC locations depicted have been obtained through the application of geophysical methods to determine the existence and approximate horizontal position of these facilities. However, SBC will not provide TBE Group, Inc. with utility records nor allow access to their field closures (pedestals/manholes etc.), to help verify the locations of their existing underground facilities. Therefore, TBE is unable to verify the completeness of the SBC locations depicted in accordance with the CI/ASCE Standard 38-02.

TBE GROUP, INC.
 CIVIL ENGINEERING * TRANSPORTATION * ENVIRONMENTAL
 * PLANNING * UTILITY ENGINEERING/LOCATING

TBE Project: IL09500253, 255, 259
 TBE SUE PAGE NO: 7 of 15
 Checked by: *[Signature]*
 Utility Quality Level "A": Test Holes
 Utility Quality Level "B": Designating

	SEWER
	TELEPHONE
	GAS
	WATER
	FIBER OPTIC
	ELECTRIC
	TEST HOLE

Utilities shown on these plans as depicted in the legend have been investigated by TBE Group, Inc in accordance with SUE Industry Standards. All other information shown has been provided to TBE Group, Inc by others. TBE's SUE field investigation was performed during the period 5-06-06 through 6-29-06. Changes to utilities after this date may have been made and therefore may result in variances from this plan. Consideration should be given to updating this plan if deemed advisable prior to final design and construction.

205 W. WACKER DRIVE
 SUITE 1020
 CHICAGO, IL 60606
 (312) 704-1970

REVISIONS	
NAME	DATE

ILLINOIS DEPARTMENT OF TRANSPORTATION
 SUE Investigation of Underground Utilities
 US RT. 6 from I-294 to IL RT. 1
 Harvey, IL-Cook County
 Section No. 3277R
 Contract No. 60774
 DRAWN BY : KLC
 SCALE : 1:500