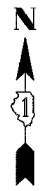


F.A.P. RTE.	SECTION	COUNTY	TOTAL SHEETS	SHEET NO.
351	2008-001VB	COOK	579	133
STA. 2+700		TO STA. 3+250		
FED. ROAD DIST. NO.	ILLINOIS FED. AID PROJECT			
CONTRACT NO. 60E10				

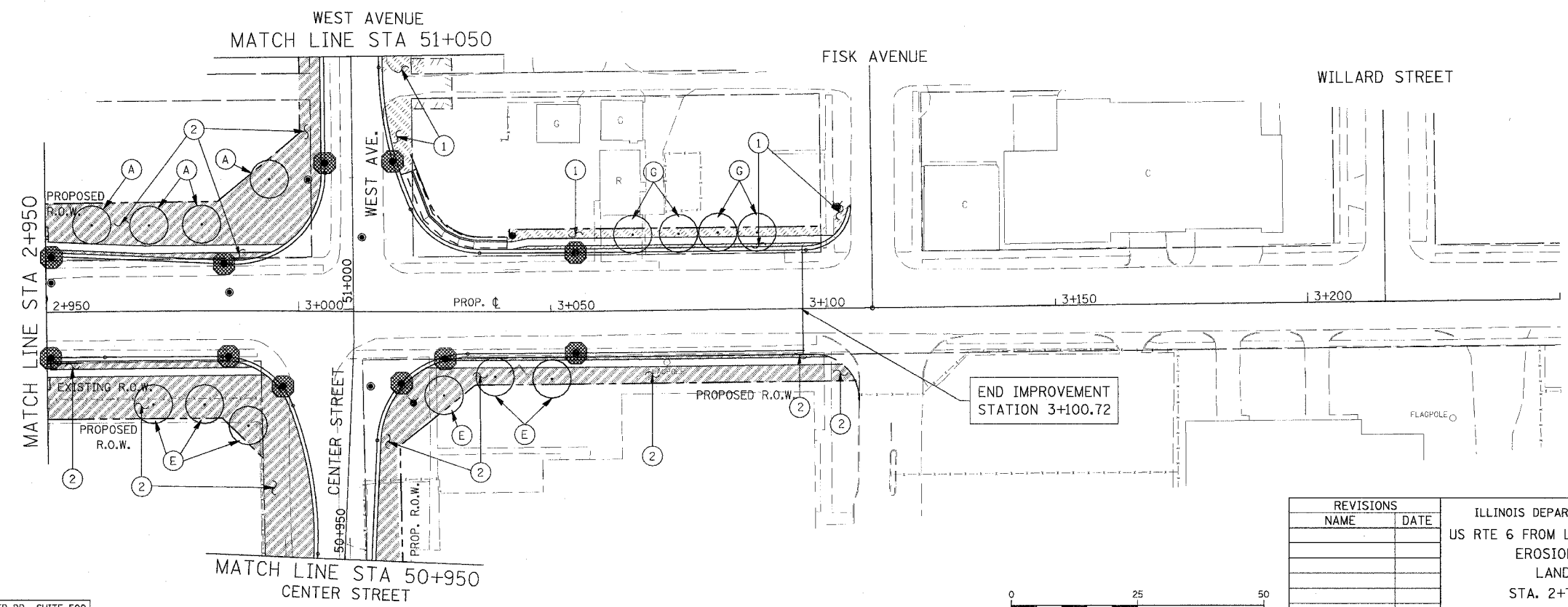
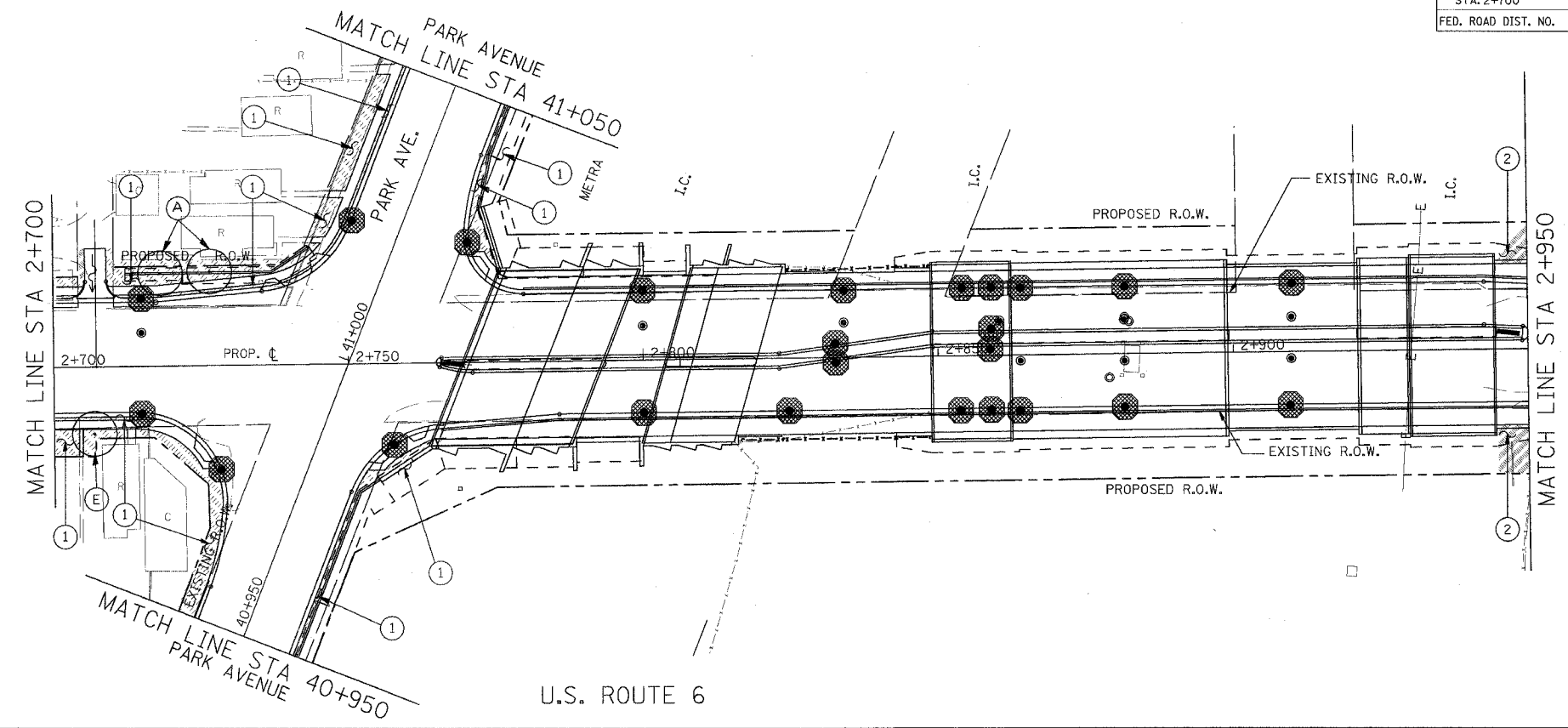


TREE LEGEND

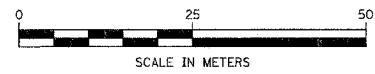
- (A) AUTUMN BLAZE MAPLE
- (B) AUTUMN PURPLE ASH
- (C) SKYLINE HONEYLOCUST
- (D) KENTUCKY COFFEETREE
- (E) GREENSPIRE LINDEN
- (F) RED JEWEL CRABAPPLE
- (G) CHANTICLEER PEAR

LEGEND

- (1) SODDING, SALT TOLERANT
- (2) SEEDING, CLASS 2A
- (3) PERIMETER EROSION BARRIER
- INLET & PIPE PROTECTION
- INLET FILTER



URS
 100 S. WACKER DR., SUITE 500
 CHICAGO, ILLINOIS 60606
 TEL. (312) 939-1000
 FAX (312) 939-4198



REVISIONS	
NAME	DATE

ILLINOIS DEPARTMENT OF TRANSPORTATION
 US RTE 6 FROM LEXINGTON AVE TO FISK AVE
 EROSION CONTROL AND
 LANDSCAPING PLAN
 STA. 2+700 TO STA. 3+250
 EC-05
 DATE 02/21/08
 DRAWN BY VAP
 CHECKED BY NAP

U.S. ROUTE 6