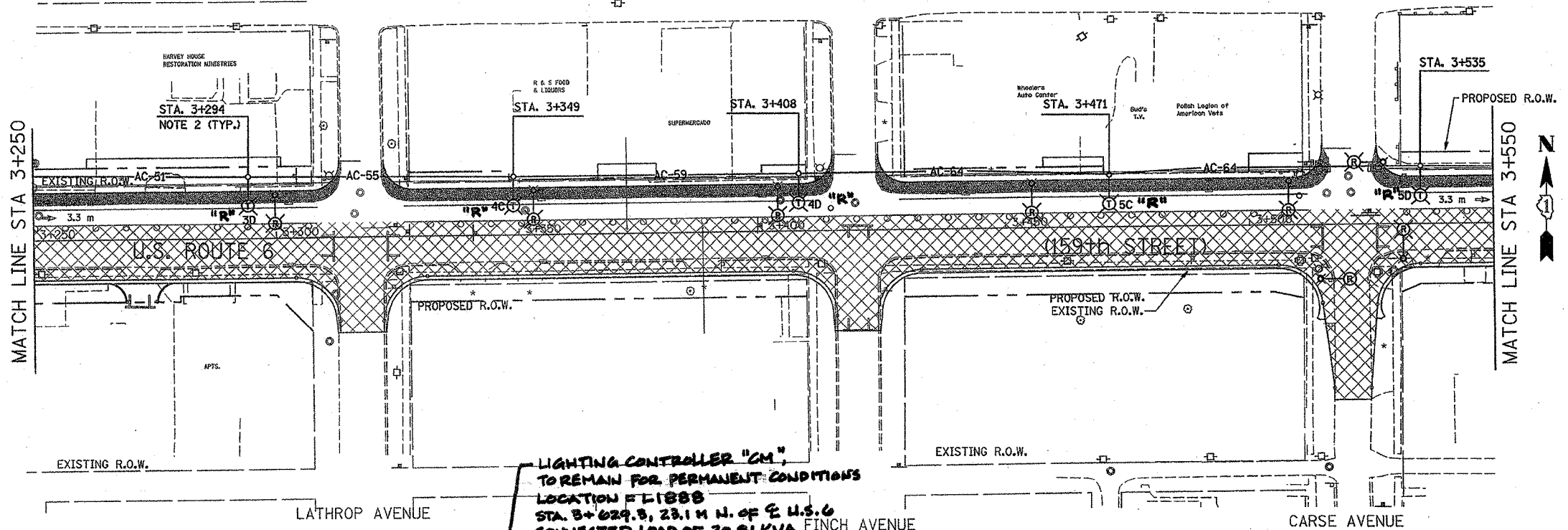


F.A. RTE.	SECTION	COUNTY	TOTAL SHEETS	SHEET NO.
351	2008-001VB	COOK	579	163
STA. 3+250		TO STA. 3+850		
FED. ROAD DIST. NO.	ILLINOIS FED. AID PROJECT		60E10	

NOTES:

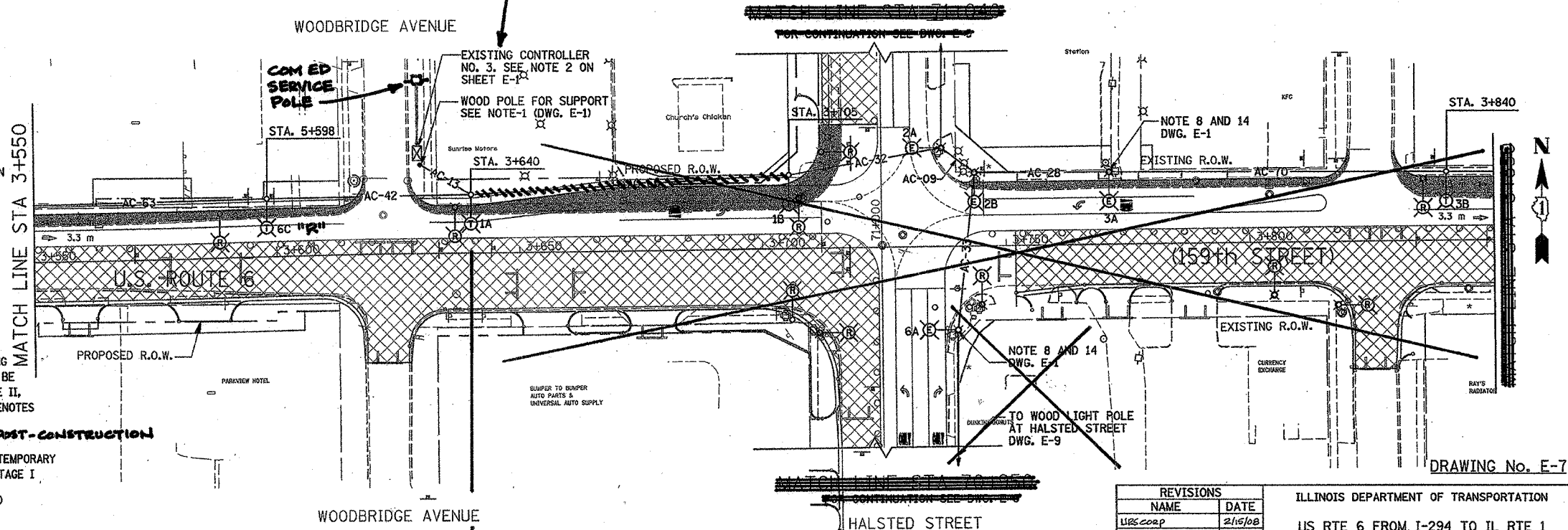
- REFER TO LIGHTING NOTES ON DRAWING E-1.
- SETBACK FOR THE TEMPORARY POLES SHALL BE 1.82 M (6') MINIMUM FROM THE BACK OF THE CURB.



LIGHTING CONTROLLER "CM"
 TO REMAIN FOR PERMANENT CONDITIONS
 LOCATION F-1888
 STA. 3+629.8, 23.1 M N. OF E U.S. 6
 CONNECTED LOAD OF 20.81 KVA

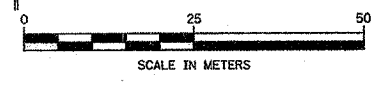
LEGEND

- EXISTING LTG. POLE TO BE REMOVED
- EXISTING LTG. POLE TO REMAIN "AS IS" ON THE EXISTING CIRCUIT DURING CONSTRUCTION STAGE I ONLY. TO BE REMOVED DURING CONSTRUCTION STAGE II
- EXISTING PAVEMENT, SHOULDER CURB & GUTTER TO BE REMOVED BY OTHERS
- TEMPORARY AERIAL CABLE 3-1/C NO. 2 ALUMINUM WITH STEEL MESSENGER WIRE XX-INDICATES LENGTH IN METERS
- LIGHT POLE, WOOD, WITH 4.5M MAST ARM AND 400W HPS LUMINAIRES DURING CONSTRUCTION STAGE I ONLY AND TO BE REMOVED DURING CONSTRUCTION STAGE II. SEE NOTE-6 ON SHEET E-1. LETTER DENOTES CIRCUIT IN EXISTING CONTROLLER.
TR - TEMP. POLE TO REMAIN POST-CONSTRUCTION
- LIGHT POLE, WOOD, FOR SUPPORT OF TEMPORARY AERIAL CABLE DURING CONSTRUCTION STAGE I
- EXISTING CONTROLLER TO BE REMOVED AT COMPLETION OF PROJECT
- CONSTRUCTION STAGE I.
- TEMPORARY PAVEMENT WITH TEMP. C&G



END PROPOSED LIGHTING IMPROVEMENTS - STA 3+640 CONTRACT 60E10

PROPOSED IMPROVEMENTS IN CONTRACT 60774



REVISIONS	
NAME	DATE
UBS/COOP	2/15/08

ILLINOIS DEPARTMENT OF TRANSPORTATION
 US RTE 6 FROM I-294 TO IL RTE 1
 REMOVAL & TEMPORARY LIGHTING PLAN
 FROM STA. 3+250 TO STA. 3+850
 DRAWN BY S.S./W.S.
 CHECKED BY C.K./H.S.
 DATE 12/12/07

Delta Engineering, Inc.
 CONSULTING ENGINEERS, CHICAGO, ILLINOIS

DRAWING No. E-7