

F.A. RTE.	SECTION	COUNTY	TOTAL SHEETS	SHEET NO.
			570	165
STA.		TO STA.		
FED. ROAD DIST. NO.		ILLINOIS FED. AID PROJECT		

DEVICE SCHEDULE

ITEM	QUANT.	DESCRIPTION
(A)	2	CIRCUIT BREAKER, MOLDED CASE, THERMAL MAGNETIC, 2-POLE, 600V. A.C., 225A FRAME, 175A. NON-INTERCHANGABLE TRIP, BOLT-ON TYPE; INTERRUPTING CAPACITY OF NOT LESS THAN 22,000 RMS SYMMETRICAL AMPERES AT 480V.
(B)	2	LIGHTING CONTACTOR (REMOTE CONTROL SWITCH) MECHANICALLY HELD, ASCO 920, MOUNTED ON SUB PANEL 200A., 2P., 600V. WITH 240V. COIL.
(C)	2	PANEL BOARD (INTERIOR ONLY) 480/240V. SINGLE PHASE WITH 200A. COPPER MAINS AND EIGHT JP-70A BOLT-ON BRANCH BREAKERS EACH RATED 277V. WITH INTERRUPTING CAPACITY OF NOT LESS THAN 14,000 RMS SYMMETRICAL AMPERES AT 277V.
(D)	1	TIME CLOCK; 240V. 60 HZ. MICROPROCESSOR BASED 2-CHANNEL CONTROLLER WITH ASTRONOMIC FUNCTIONS. RATED FOR -30 DEGREES C. TO +70 DEGREES C.
(E)	2	CIRCUIT BREAKER, MOLDED CASE, THERMAL MAGNETIC, 1-POLE, 277V., BOLT-ON TYPE, 15A WITH AN INTERRUPTING RATING OF NOT LESS THAN 14,000 RMS SYMMETRICAL AMPERES AT 277V.
(F)	1	CONTROL SWITCH, MOMENTARY CONTACT, SPDT, 20A., 240V.
(G)	1	CONTROL SWITCH, TOGGLE TYPE, SPDT, 20A., 240V. PREMIUM SPEC. GRADE
(H)	1	SOCKET FOR ELECTRIC UTILITY COMPANY METER.
(I)	1	STEP DOWN TRANSFORMER 240V.-120V., 1KVA.
(J)	2	FUSE HOLDER 15A., 250V., 5A. FUSE
(K)	1	20A. SPST MICRO SWITCH (MOUNT WITH ACTUATOR TO SWITCH WHEN DOOR OPENED)
(L)	1	60 WATT LIGHT FIXTURE, VAPOR TIGHT, WITH GLOBE AND GUARD AND MOUNTING BOX.
(M)	1	GFI RECEPTACLE, 120V., 20A., PREMIUM SPEC. GRADE. NEMA REFERENCE 5-15R IN WEATHER-PROOF BOX WITH FLAP-TYPE COVER.

NOTES:

- ALL CONTROL CABINET ITEMS SHALL HAVE SUITABLE IDENTIFICATION. OPEN CIRCUIT BREAKERS, CONTACTORS AND OTHER OPEN DEVICES SHALL HAVE PERMANENT SELF-STICKING TAGS. DEVICES IN ENCLOSURES SHALL HAVE ENGRAVED 2-COLOR LAMINATED PLASTIC NAMEPLATES ATTACHED TO ENCLOSURES WITH SCREWS. NAMEPLATES SHALL BE ENGRAVED TO CORRESPOND TO DESIGNATIONS ON THE DRAWINGS. INTERNAL CABINET WIRING SHALL BE IDENTIFIED AS INDICATED OR AS DIRECTED BY THE ENGINEER BY MEANS OF SELF-STICKING TAGS APPLIED AT EACH CONNECTED END. IDENTIFICATION SHALL BE MADE BY THE CABINET MANUFACTURER.
- ALL WIRING WITHIN THE CABINET SHALL BE COLOR CODED AS INDICATED.  
R = RED BL = BLUE W = WHITE  
B = BLACK Y = YELLOW G = GREEN
- PROVIDE SEALING GROMMETS FOR ALL OPEN WIRING EXTENDED FROM DEVICES IN BOXES OR CABINETS WITHIN THE CONTROL CABINET.
- ALL 120 VOLT SYSTEM AND ALL CONTROL WIRING SHALL BE #12AWG STRANDED UNLESS OTHERWISE INDICATED.
- ALL WIRING SHALL BE NEATLY DRESSED AND SUPPORTED.
- THE CONTROLLER SHALL BE CONSTRUCTED TO UL, STD. 508 AND BEAR THE UL LABEL "ENCLOSED INDUSTRIAL CONTROL PANEL"
- SEE CABINET AND FOUNDATION DETAIL SHEET FOR SCHEMATIC DIAGRAM AND DEVICE LAYOUT.
- CONTROL RELAYS CAN BE ELIMINATED IF THE CONTROL TIME CLOCK OUTPUT CONTACTS ARE RATED FOR CONTACTOR INRUSH CURRENT.

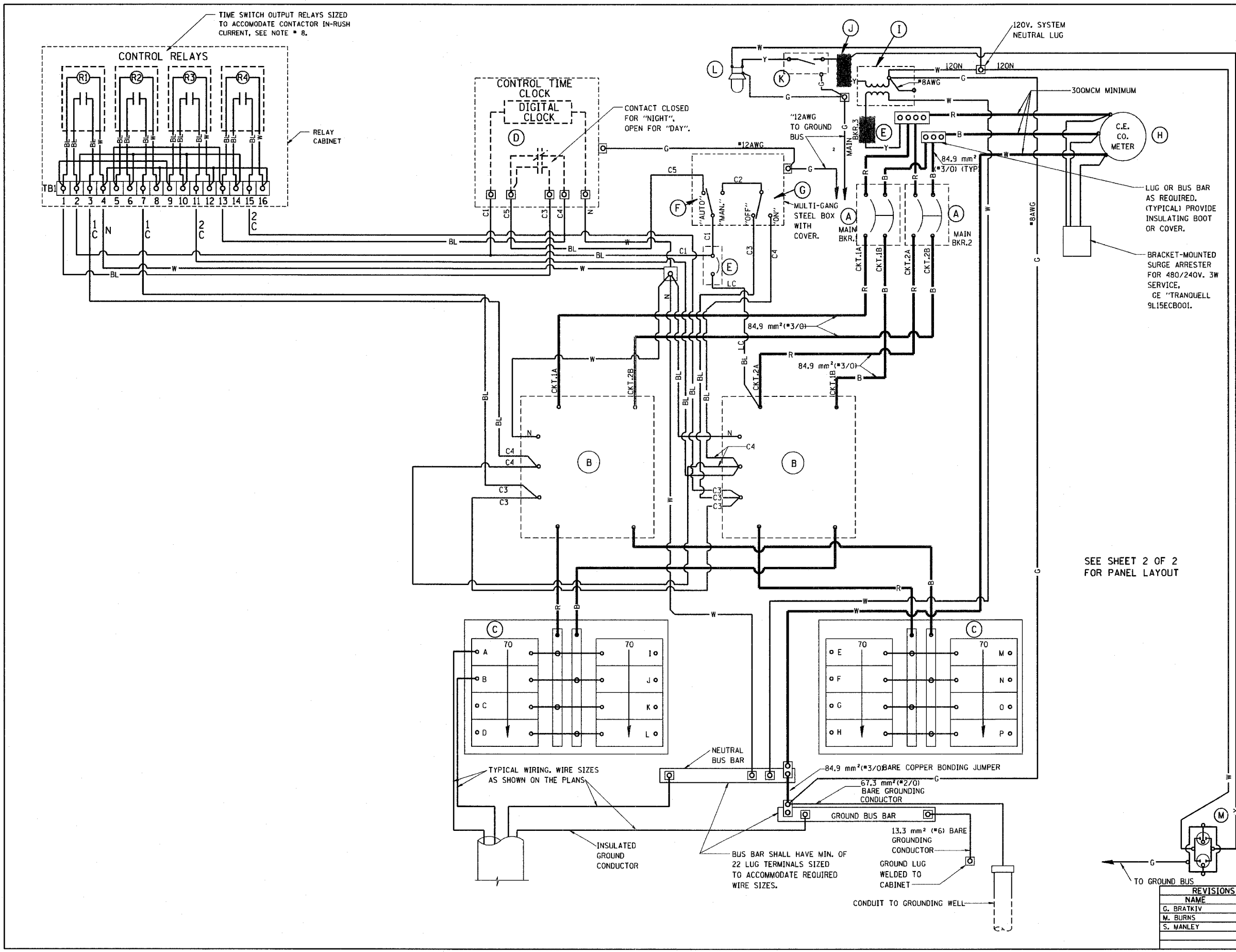
E-200

ILLINOIS DEPARTMENT OF TRANSPORTATION  
**CONTROL CABINET, DUPLEX TYPE  
 WIRING DETAIL**  
 SHEET 2 OF 4

REVISIONS		DATE
NAME		
G. BRATKIV		06-30-86
M. BURNS		07-25-91
S. MANLEY		10-11-93

SCALE: VERT. HORIZ.  
DATE: 2/15/2006

DRAWN BY  
CHECKED BY  
E-200 (BE-200)  
REVISION DATE: 12/19/02



TIME SWITCH OUTPUT RELAYS SIZED TO ACCOMMODATE CONTACTOR IN-RUSH CURRENT, SEE NOTE # 8.

CONTACT CLOSED FOR "NIGHT", OPEN FOR "DAY".

LUG OR BUS BAR AS REQUIRED. (TYPICAL) PROVIDE INSULATING BOOT OR COVER.

BRACKET-MOUNTED SURGE ARRESTER FOR 480/240V. 3W SERVICE, GE "TRANQUELL 9L15ECB001.

SEE SHEET 2 OF 2 FOR PANEL LAYOUT

TYPICAL WIRING, WIRE SIZES AS SHOWN ON THE PLANS

BUS BAR SHALL HAVE MIN. OF 22 LUG TERMINALS SIZED TO ACCOMMODATE REQUIRED WIRE SIZES.

PLOT DATE = 2/15/2006  
 PLOT SCALE = 450000 / IN.  
 USER NAME = gaglianobst