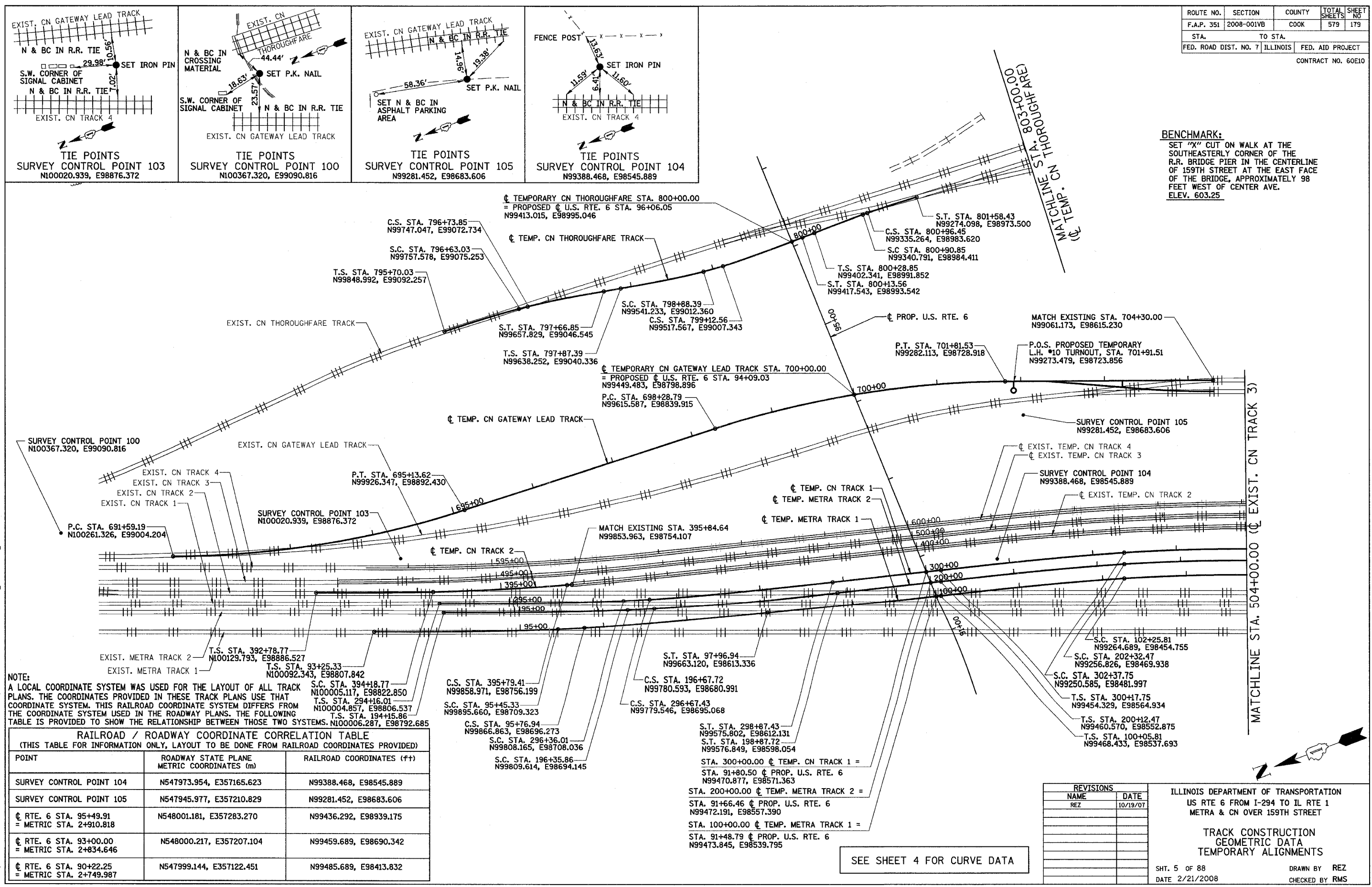


ROUTE NO.	SECTION	COUNTY	TOTAL SHEETS	SHEET NO.
F.A.P. 351	2008-001VB	COOK	579	179
STA.		TO STA.		
FED. ROAD DIST. NO. 7		ILLINOIS		FED. AID PROJECT
CONTRACT NO. 60E10				

3/13/2008 2:09:30 PM

qt:\17049.069\Track & Rail Main Contract\FINAL PLANS\geo\_t1.dgn



**BENCHMARK:**  
 SET "X" CUT ON WALK AT THE SOUTHEASTERLY CORNER OF THE R.R. BRIDGE PIER IN THE CENTERLINE OF 159TH STREET AT THE EAST FACE OF THE BRIDGE, APPROXIMATELY 98 FEET WEST OF CENTER AVE. ELEV. 603.25

**NOTE:**  
 A LOCAL COORDINATE SYSTEM WAS USED FOR THE LAYOUT OF ALL TRACK PLANS. THE COORDINATES PROVIDED IN THESE TRACK PLANS USE THAT COORDINATE SYSTEM. THIS RAILROAD COORDINATE SYSTEM DIFFERS FROM THE COORDINATE SYSTEM USED IN THE ROADWAY PLANS. THE FOLLOWING TABLE IS PROVIDED TO SHOW THE RELATIONSHIP BETWEEN THOSE TWO SYSTEMS. N100006.287, E98792.685

RAILROAD / ROADWAY COORDINATE CORRELATION TABLE (THIS TABLE FOR INFORMATION ONLY, LAYOUT TO BE DONE FROM RAILROAD COORDINATES PROVIDED)		
POINT	ROADWAY STATE PLANE METRIC COORDINATES (m)	RAILROAD COORDINATES (FT)
SURVEY CONTROL POINT 104	N547973.954, E357165.623	N99388.468, E98545.889
SURVEY CONTROL POINT 105	N547945.977, E357210.829	N99281.452, E98683.606
☐ RTE. 6 STA. 95+49.91 = METRIC STA. 2+910.818	N548001.181, E357283.270	N99436.292, E98939.175
☐ RTE. 6 STA. 93+00.00 = METRIC STA. 2+834.646	N548000.217, E357207.104	N99459.689, E98690.342
☐ RTE. 6 STA. 90+22.25 = METRIC STA. 2+749.987	N547999.144, E357122.451	N99485.689, E98413.832

STA. 300+00.00 ☐ TEMP. CN TRACK 1 =  
 STA. 91+80.50 ☐ PROP. U.S. RTE. 6  
 N99470.877, E98571.363  
 STA. 200+00.00 ☐ TEMP. METRA TRACK 2 =  
 STA. 91+66.46 ☐ PROP. U.S. RTE. 6  
 N99472.191, E98557.390  
 STA. 100+00.00 ☐ TEMP. METRA TRACK 1 =  
 STA. 91+48.79 ☐ PROP. U.S. RTE. 6  
 N99473.845, E98539.795

SEE SHEET 4 FOR CURVE DATA

REVISIONS	
NAME	DATE
REZ	10/19/07

ILLINOIS DEPARTMENT OF TRANSPORTATION  
 US RTE 6 FROM I-294 TO IL RTE 1  
 METRA & CN OVER 159TH STREET

**TRACK CONSTRUCTION  
 GEOMETRIC DATA  
 TEMPORARY ALIGNMENTS**

SHT. 5 OF 88  
 DATE 2/21/2008

DRAWN BY REZ  
 CHECKED BY RMS