

3/13/2008 2:09:38 PM

q:\17049\069\Track & Rail Main Contract\FINAL PLANS\stg1new\_1.dgn

### LEGEND

- +— NEW TRACK CONSTRUCTION
- +— NEW TRACK COMPLETED IN PREVIOUS STAGE
- - - EXISTING TRACK TO BE REALIGNED
- - - TEMPORARY TRACK TO BE REMOVED
- ||||| EXISTING TRACK TO BE REMOVED AS SHOWN
- ||||| EXISTING TRACK
- EXISTING CATENARY POLE
- PROPOSED TEMPORARY/PERMANENT CATENARY POLE
- ✕ ITEM TO BE REMOVED
- ▨ PROPOSED ROADBED CONSTRUCTION
- ⚡ PROPOSED TEMPORARY/PERMANENT POINT OF SWITCH

#### RAILROAD TRACK, REMOVE (BY CONTRACTOR)

EXIST. CN TRACK 2  
 STA. EXIST CN 2 395+84.84  
 TO EXIST CN 2 403+88.84 = 804 TRK. FT.  
 EXIST. CN TRACK 1  
 STA. EXIST CN 1 297+31.57  
 TO EXIST CN 1 303+81.57 = 650 TRK. FT.  
 TOTAL = 1454 TRK. FT.

#### RAILROAD TRACK (BY CONTRACTOR)

TEMP. CN TRACK 1  
 STA. 297+31.57 TO 303+84.00 = 652 TRK. FT.  
 TEMP. METRA TRACK 2  
 STA. 198+61.61 TO 203+79.00 = 517 TRK. FT.  
 TEMP. METRA TRACK 1  
 STA. 100+11.56 TO 103+73.00 = 361 TRK. FT.  
 TOTAL = 1530 TRK. FT.

#### RAILROAD TRACK SHIFT (BY CN)

REALIGN EXIST. CN TRACK 2  
 STA. 392+78.77 TO 395+84.84  
 REALIGN EXIST. CN TRACK 1  
 STA. 294+16.01 TO 297+31.57

#### RAILROAD TRACK SHIFT ASSIST (BY CONTRACTOR)

1 EACH FOR ABOVE CN TRACK SHIFTS  
 TOTAL = 2 EA.

ROUTE NO.	SECTION	COUNTY	TOTAL SHEETS	SHEET NO
F.A.P. 351	2008-001VB	COOK	579	195
STA.	TO STA.		FED. ROAD DIST. NO. 7 ILLINOIS FED. AID PROJECT	
CONTRACT NO. 60E10				

#### BALLAST (BY CONTRACTOR)

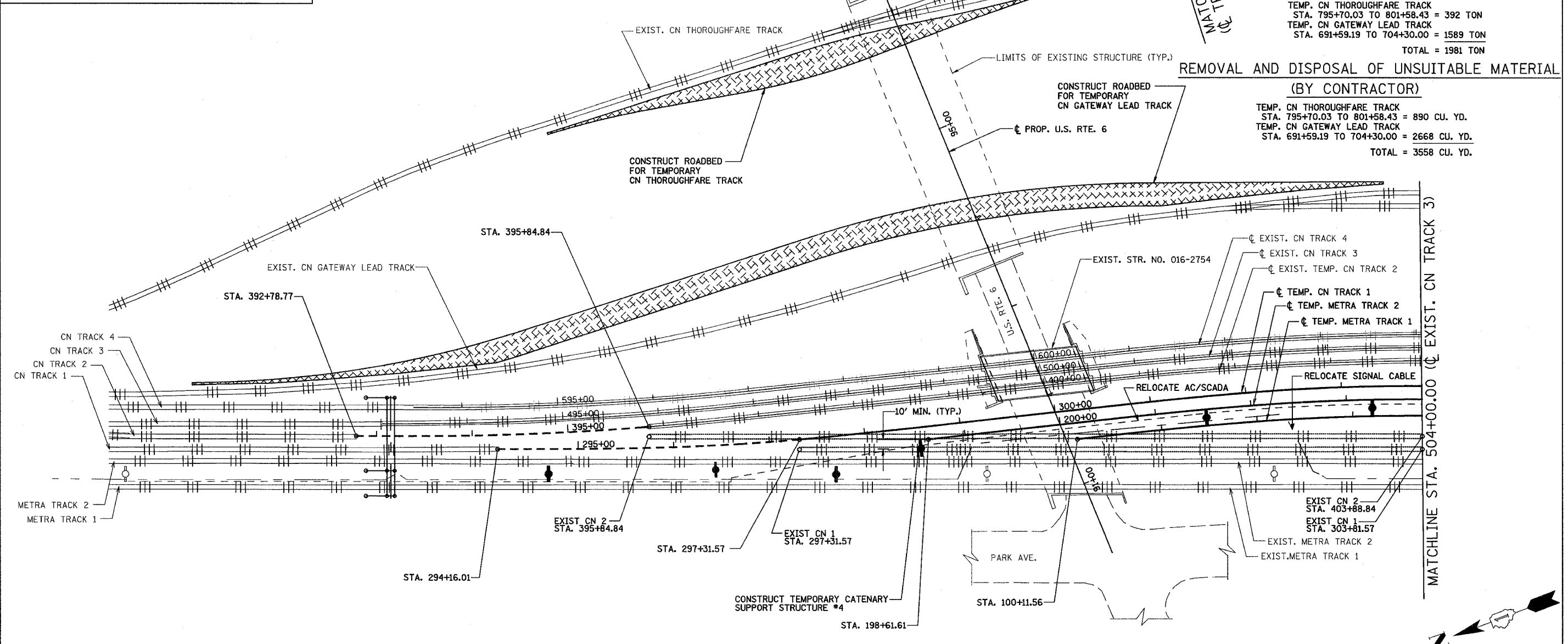
TEMP. CN TRACK 1  
 STA. 299+87.84 TO 303+83.96 = 436 TON  
 TEMP. METRA TRACK 2  
 STA. 199+83.94 TO 203+78.77 = 437 TON  
 TEMP. METRA TRACK 1  
 STA. 100+11.56 TO 103+72.22 = 437 TON  
 TEMP. CN THOROUGHFARE TRACK  
 STA. 795+70.03 TO 801+58.43 = 794 TON  
 TEMP. CN GATEWAY LEAD TRACK  
 STA. 691+59.19 TO 704+30.00 = 2472 TON  
 TOTAL = 4576 TON

#### SUBBALLAST (BY CONTRACTOR)

TEMP. CN THOROUGHFARE TRACK  
 STA. 795+70.03 TO 801+58.43 = 392 TON  
 TEMP. CN GATEWAY LEAD TRACK  
 STA. 691+59.19 TO 704+30.00 = 1589 TON  
 TOTAL = 1981 TON

#### REMOVAL AND DISPOSAL OF UNSUITABLE MATERIAL (BY CONTRACTOR)

TEMP. CN THOROUGHFARE TRACK  
 STA. 795+70.03 TO 801+58.43 = 890 CU. YD.  
 TEMP. CN GATEWAY LEAD TRACK  
 STA. 691+59.19 TO 704+30.00 = 2668 CU. YD.  
 TOTAL = 3558 CU. YD.



#### STAGE 1

NOTES:  
 FOR STAGE 1 SUGGESTED TRACK CONSTRUCTION TASKS & SEQUENCING SEE SHEET 23.  
 FOR AC/SCADA AND SIGNAL RELOCATION SEE METRA UTILITIES SHEETS.  
 FOR SIGNAL CABLE RELOCATION SEE SIGNAL SHEETS.

#### STAGE 1 WORK SUMMARY

SHIFT CN TRACK 2 TO TEMPORARY DIVERSION  
 CONSTRUCT PORTIONS OF TEMP DIVERSIONS FOR CN 1 AND METRA 1 & 2 TRACKS  
 SHIFT CN TRACK 1 TO TEMPORARY DIVERSION  
 CONSTRUCT TEMPORARY CATENARY SUPPORT STRUCTURES #4, #8 & #9

REVISIONS	
NAME	DATE
REZ	10/19/07

ILLINOIS DEPARTMENT OF TRANSPORTATION  
 US RTE 6 FROM I-294 TO IL RTE 1  
 METRA & CN OVER 159TH STREET

TRACK CONSTRUCTION  
 PLAN OF STAGE 1 WORK (NORTH)

SHT. 21 OF 88  
 DATE 2/21/2008

DRAWN BY REZ  
 CHECKED BY RMS