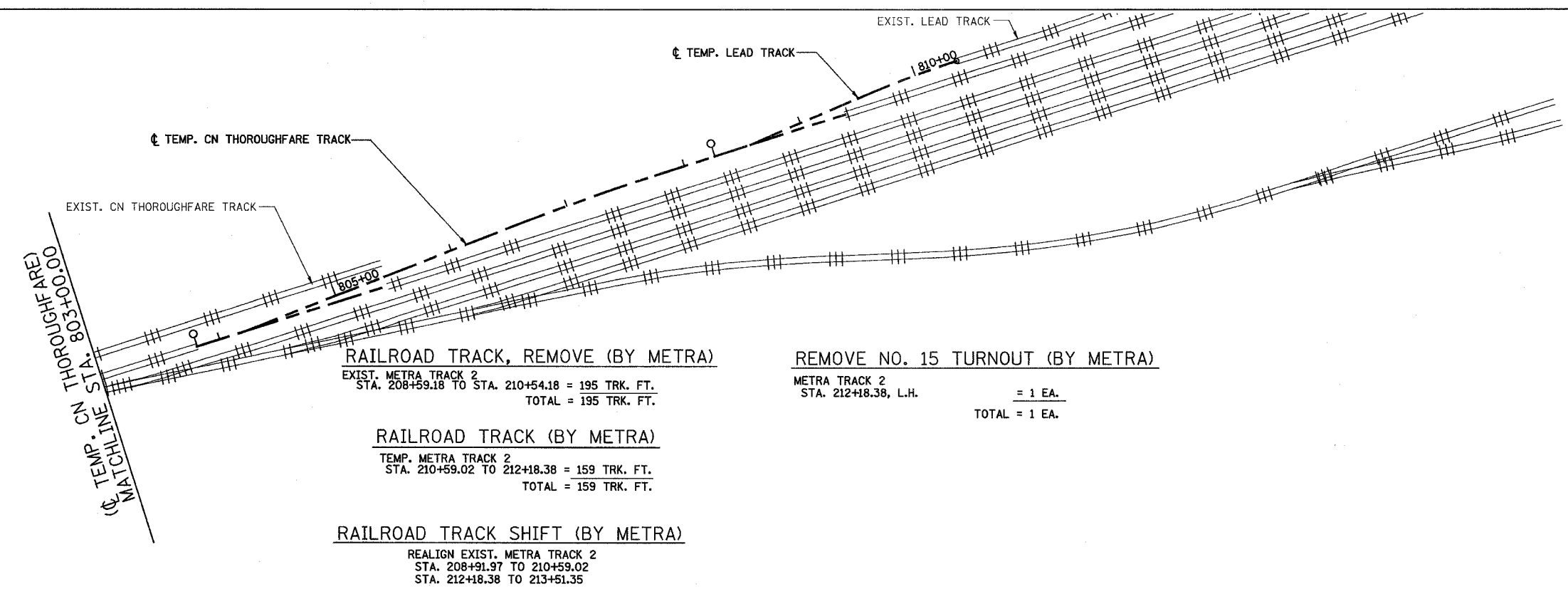


ROUTE NO.	SECTION	COUNTY	TOTAL SHEETS	SHEET NO.
F.A.P. 351	2008-001VB	COOK	579	202
STA.		TO STA.		
FED. ROAD DIST. NO. 7		ILLINOIS	FED. AID PROJECT	
CONTRACT NO. 60E10				

3/13/2008 2:09:42 PM

c:\17049,069\Track & Rail Main Contract\FINAL PLANS\stg3new_2.dgn

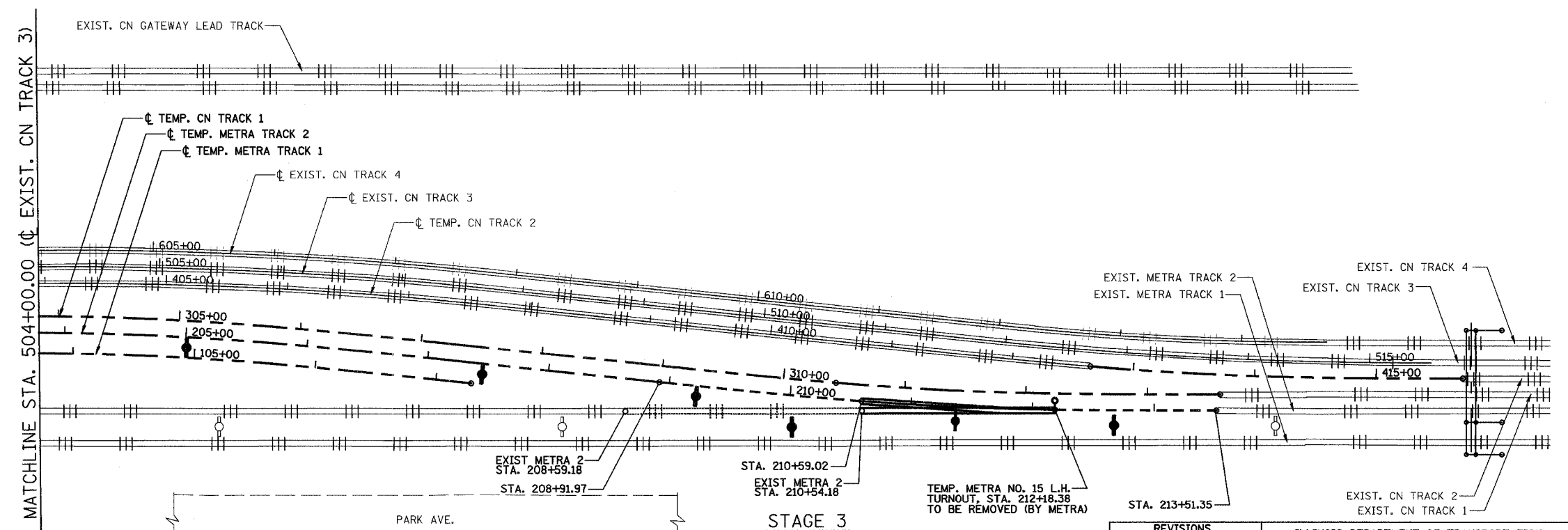


RAILROAD TRACK, REMOVE (BY METRA)
 EXIST. METRA TRACK 2
 STA. 208+59.18 TO STA. 210+54.18 = 195 TRK. FT.
 TOTAL = 195 TRK. FT.

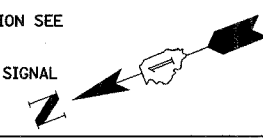
RAILROAD TRACK (BY METRA)
 TEMP. METRA TRACK 2
 STA. 210+59.02 TO 212+18.38 = 159 TRK. FT.
 TOTAL = 159 TRK. FT.

RAILROAD TRACK SHIFT (BY METRA)
 REALIGN EXIST. METRA TRACK 2
 STA. 208+91.97 TO 210+59.02
 STA. 212+18.38 TO 213+51.35

REMOVE NO. 15 TURNOUT (BY METRA)
 METRA TRACK 2
 STA. 212+18.38, L.H. = 1 EA.
 TOTAL = 1 EA.



NOTES:
 FOR STAGE 3 SUGGESTED TRACK CONSTRUCTION TASKS & SEQUENCING SEE SHEET 29.
 FOR AC/SCADA AND SIGNAL RELOCATION SEE METRA UTILITIES SHEETS.
 FOR SIGNAL CABLE RELOCATION SEE SIGNAL SHEETS.
 FOR LEGEND, SEE SHEET 21.



REVISIONS	
NAME	DATE
REZ	10/19/07

ILLINOIS DEPARTMENT OF TRANSPORTATION
 US RTE 6 FROM I-294 TO IL RTE 1
 METRA & CN OVER 159TH STREET

**TRACK CONSTRUCTION
 PLAN OF STAGE 3 WORK (SOUTH)**

SHT. 28 OF 88
 DATE 2/21/2008

DRAWN BY REZ
 CHECKED BY RMS