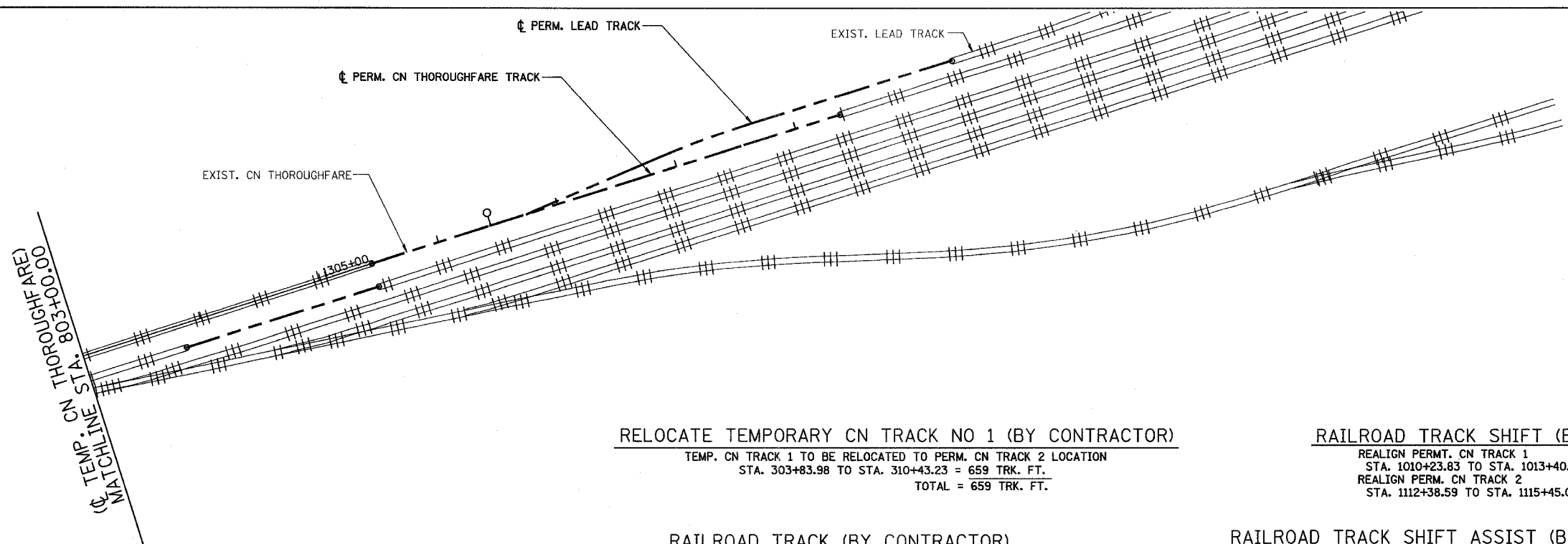


ROUTE NO.	SECTION	COUNTY	TOTAL SHEETS	SHEET NO
F.A.P. 351	2008-001VB	COOK	579	220
STA.		TO STA.		
FED. ROAD DIST. NO. 7		ILLINOIS	FED. AID PROJECT	
CONTRACT NO. 60E10				

3/13/2008 2:09:51 PM

MATCHLINE STA. 800+00.00 (THOROUGHFARE)
 (C) TEMP. CN THOROUGHFARE



RELOCATE TEMPORARY CN TRACK NO 1 (BY CONTRACTOR)

TEMP. CN TRACK 1 TO BE RELOCATED TO PERM. CN TRACK 2 LOCATION
 STA. 303+83.98 TO STA. 310+43.23 = 659 TRK. FT.
 TOTAL = 659 TRK. FT.

RAILROAD TRACK SHIFT (BY CN)

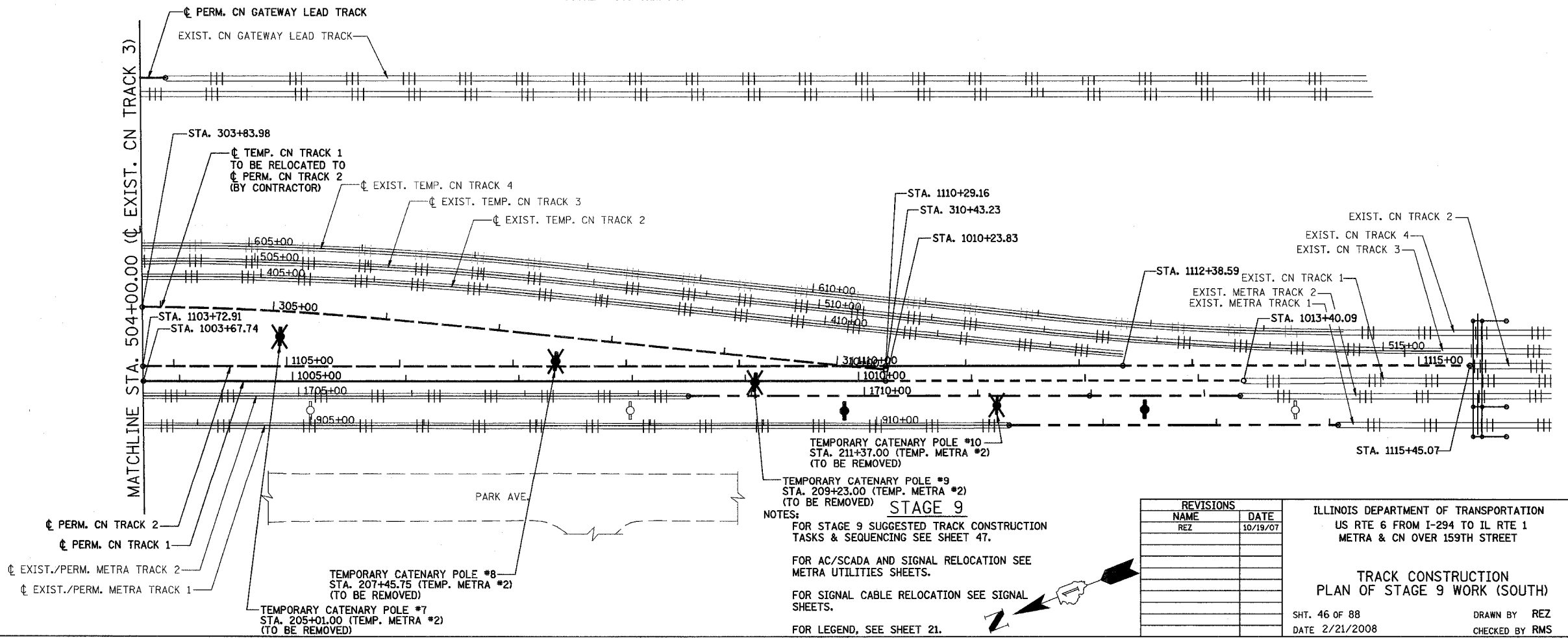
REALIGN PERMT. CN TRACK 1
 STA. 1010+23.83 TO STA. 1013+40.09
 REALIGN PERM. CN TRACK 2
 STA. 1112+38.59 TO STA. 1115+45.07

RAILROAD TRACK (BY CONTRACTOR)

PERM. CN TRACK 2
 STA. 1110+29.16 TO STA. 1112+38.59 = 209 TRK. FT.
 PERM. CN TRACK 1
 STA. 1003+67.74 TO STA. 1010+23.83 = 656 TRK. FT.
 TOTAL = 865 TRK. FT.

RAILROAD TRACK SHIFT ASSIST (BY CONTRACTOR)

1 EACH FOR ABOVE CN TRACK SHIFTS
 TOTAL = 2 EACH



NOTES:
 FOR STAGE 9 SUGGESTED TRACK CONSTRUCTION TASKS & SEQUENCING SEE SHEET 47.
 FOR AC/SCADA AND SIGNAL RELOCATION SEE METRA UTILITIES SHEETS.
 FOR SIGNAL CABLE RELOCATION SEE SIGNAL SHEETS.
 FOR LEGEND, SEE SHEET 21.

REVISIONS	
NAME	DATE
REZ	10/19/07

ILLINOIS DEPARTMENT OF TRANSPORTATION
 US RTE 6 FROM I-294 TO IL RTE 1
 METRA & CN OVER 159TH STREET

**TRACK CONSTRUCTION
 PLAN OF STAGE 9 WORK (SOUTH)**

SHT. 46 OF 88
 DATE 2/21/2008

DRAWN BY REZ
 CHECKED BY RMS

q:\17049\059\Track & Rail Main Contract\FINAL PLANS\stg7new_2.dgn