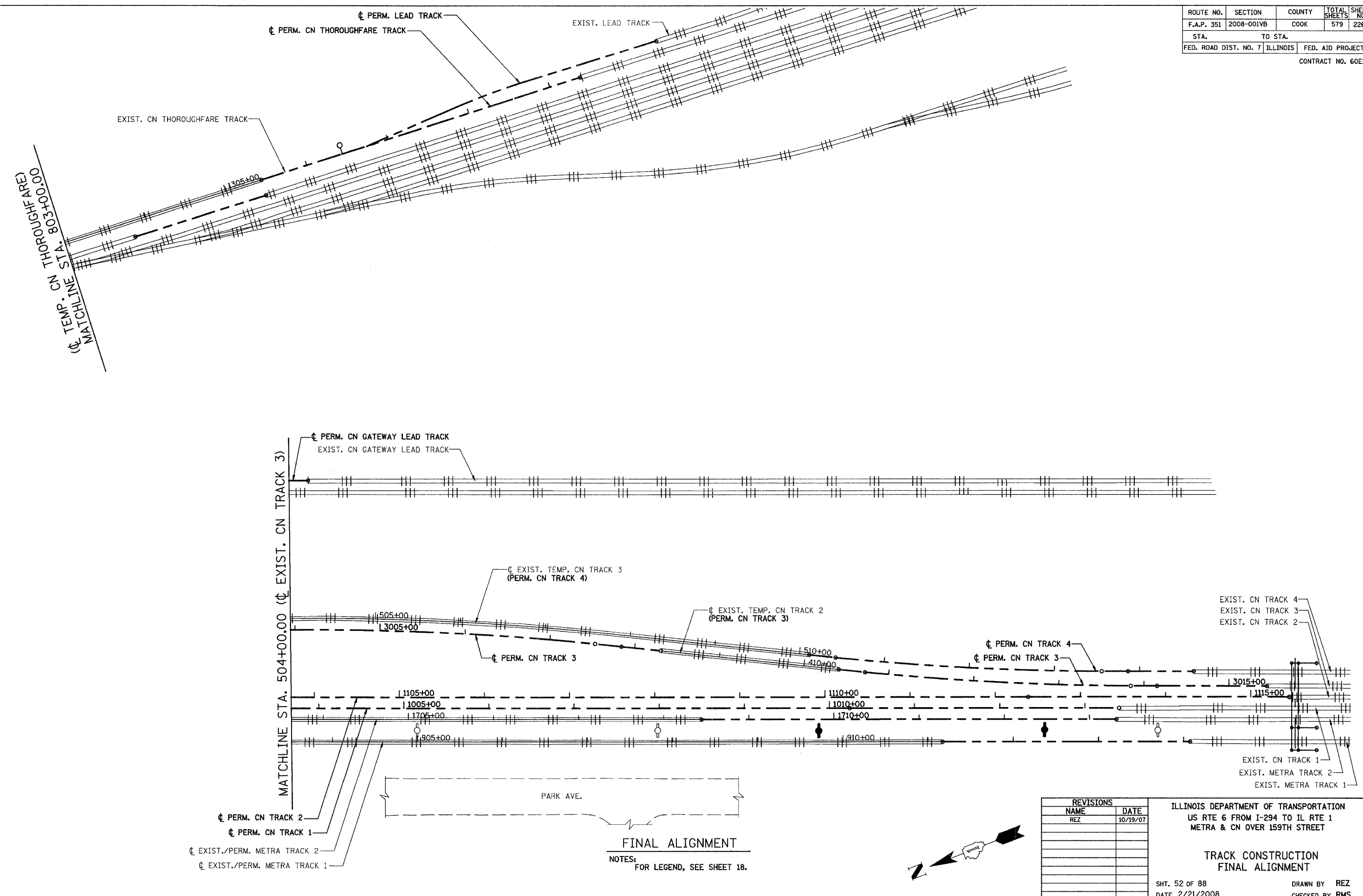


3/13/2008 2:09:53 PM

q:\17049\069\Track & Rail Main Contract\FINAL PLANS\stg-f_new_2.dgn

ROUTE NO.	SECTION	COUNTY	TOTAL SHEETS	SHEET NO
F.A.P. 351	2008-001VB	COOK	579	226
STA.		TO STA.		
FED. ROAD DIST. NO. 7		ILLINOIS	FED. AID PROJECT	
CONTRACT NO. 60E10				



◊ PERM. CN TRACK 2
 ◊ PERM. CN TRACK 1
 ◊ EXIST./PERM. METRA TRACK 2
 ◊ EXIST./PERM. METRA TRACK 1

FINAL ALIGNMENT
 NOTES:
 FOR LEGEND, SEE SHEET 18.

REVISIONS	
NAME	DATE
REZ	10/19/07

ILLINOIS DEPARTMENT OF TRANSPORTATION
 US RTE 6 FROM I-294 TO IL RTE 1
 METRA & CN OVER 159TH STREET

**TRACK CONSTRUCTION
 FINAL ALIGNMENT**

 SHT. 52 OF 88
 DATE 2/21/2008
 DRAWN BY REZ
 CHECKED BY RMS