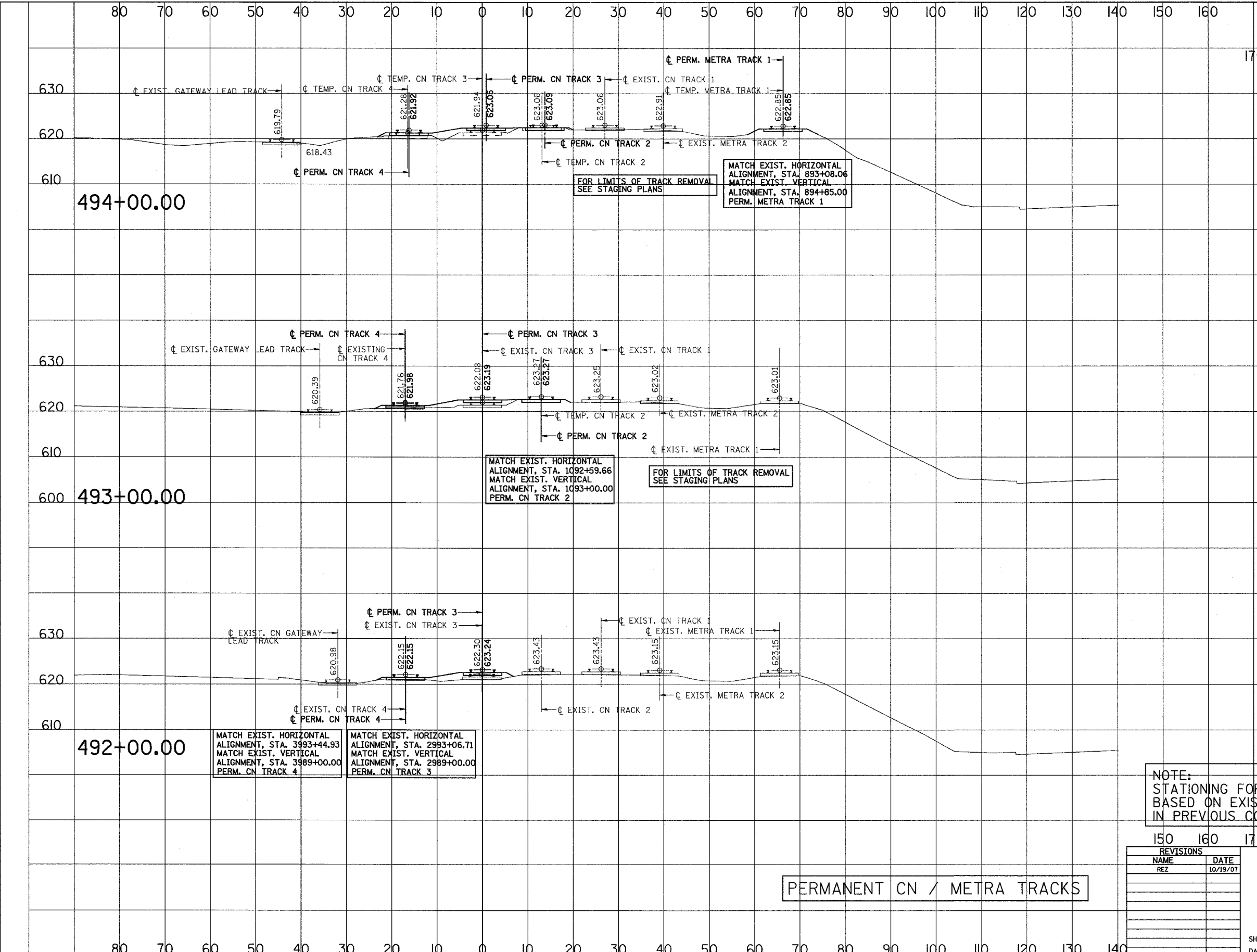


3/13/2008 2:09:57 PM

q:\17049\069\Track & Rail Main Contract\FINAL PLANS\leg-metra-f.dgn

ROUTE NO.	SECTION	COUNTY	TOTAL SHEETS	SHEET NO
F.A.P. 351	2008-001VB	COOK	579	236
STA. TO STA.		FED. ROAD DIST. NO. 7 ILLINOIS FED. AID PROJECT		
170 180 190		CONTRACT NO. 60E10		



SCALE
HORIZ. 1"=10'
VERT. 1"=10'

NOTE:
STATIONING FOR CN/METRA CROSS SECTIONS
BASED ON EXIST. CN TRACK 3 (CONSTRUCTED
IN PREVIOUS CONTRACT.)

REVISIONS	
NAME	DATE
REZ	10/19/07

PERMANENT CN / METRA TRACKS

ILLINOIS DEPARTMENT OF TRANSPORTATION
US RTE 6 FROM I-294 TO IL RTE 1
METRA & CN OVER 159TH STREET

TRACK CONSTRUCTION
PERMANENT CN/METRA ALIGNMENTS
CROSS SECTIONS

SHT. 62 OF 88
DATE 2/21/2008

DRAWN BY REZ
CHECKED BY RMS