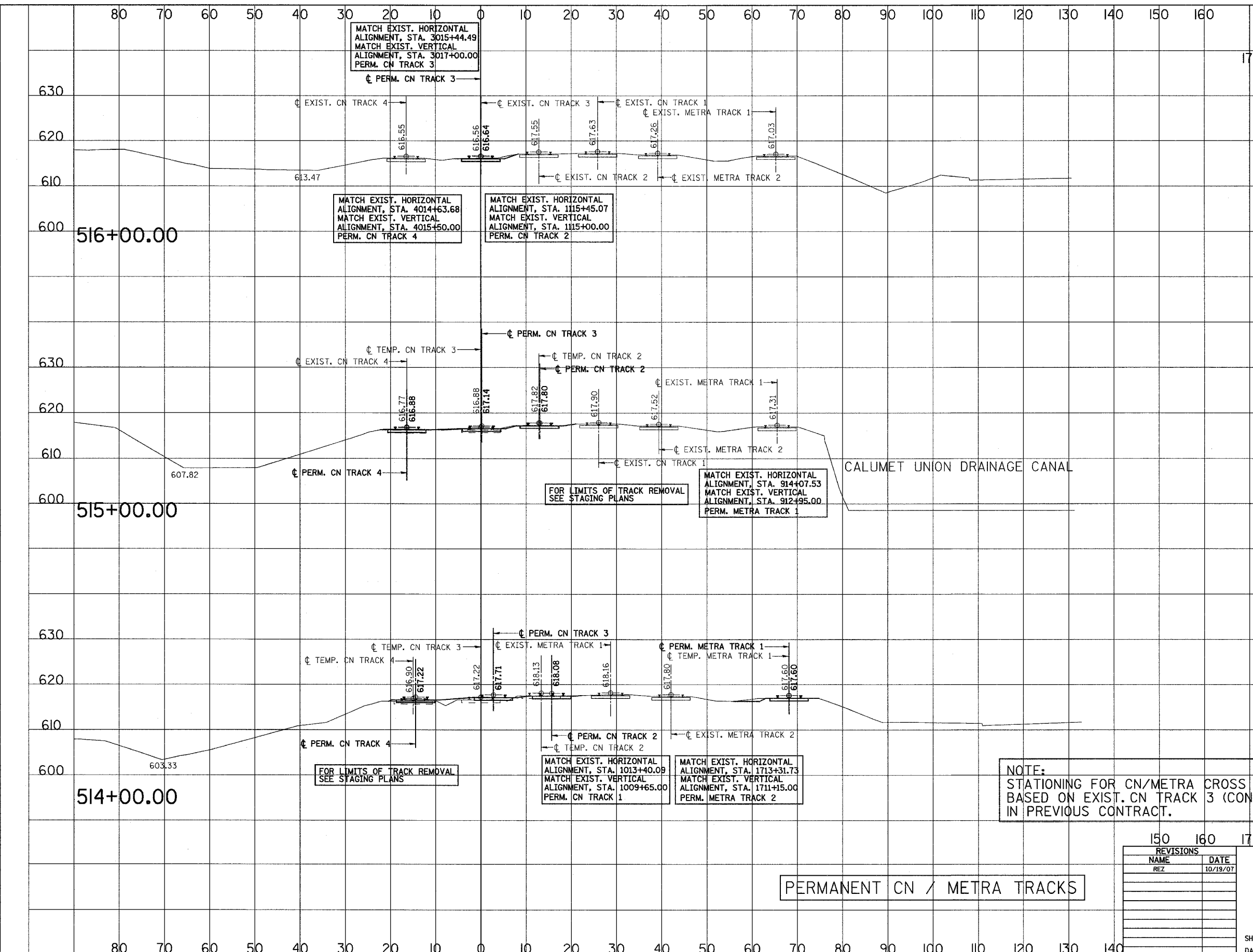


3/13/2008 2:09:56 PM

q:\17049\069\Track & Rail Main Contract\FINAL PLANS\leg-metra-f.dgn

ROUTE NO.	SECTION	COUNTY	TOTAL SHEETS	SHEET NO.
F.A.P. 351	2008-001VB	COOK	579	244
STA. 170		TO STA. 180		190
FED. ROAD DIST. NO. 7 ILLINOIS			FED. AID PROJECT	
			CONTRACT NO. 60E10	

SCALE  
HORIZ. 1"=10'  
VERT. 1"=10'



CALUMET UNION DRAINAGE CANAL

FOR LIMITS OF TRACK REMOVAL  
SEE STAGING PLANS

FOR LIMITS OF TRACK REMOVAL  
SEE STAGING PLANS

NOTE:  
STATIONING FOR CN/METRA CROSS SECTIONS  
BASED ON EXIST. CN TRACK 3 (CONSTRUCTED  
IN PREVIOUS CONTRACT.

PERMANENT CN / METRA TRACKS

REVISIONS	
NAME	DATE
REZ	10/19/07

ILLINOIS DEPARTMENT OF TRANSPORTATION  
US RTE 6 FROM I-294 TO IL RTE 1  
METRA & CN OVER 159TH STREET

TRACK CONSTRUCTION  
PERMANENT CN/METRA ALIGNMENTS  
CROSS SECTIONS

SHT. 70 OF 88  
DATE 2/21/2008

DRAWN BY REZ  
CHECKED BY RMS