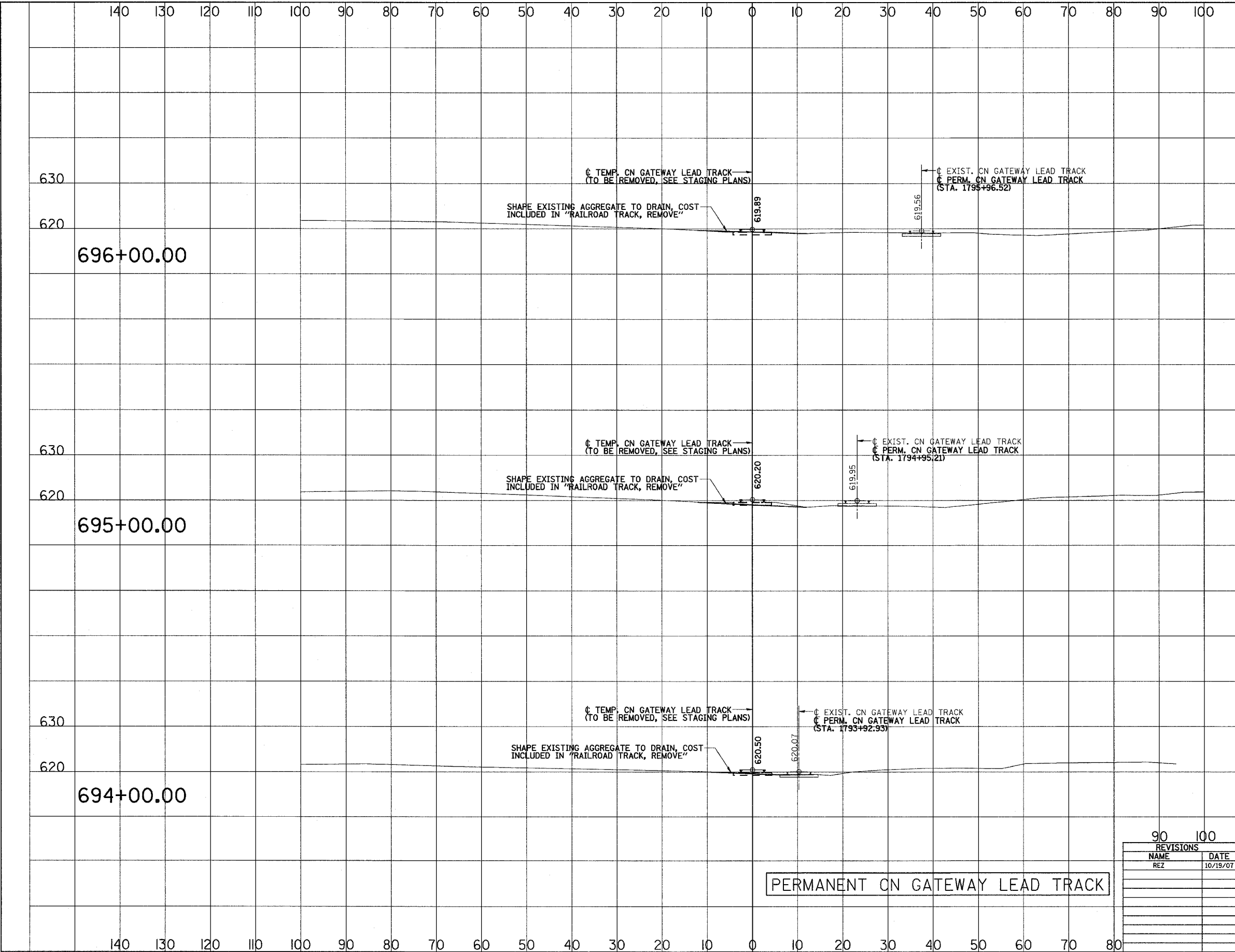


3/13/2008 2:10:00 PM

q:\17049\069\Track & Rail Main Contract\FINAL PLANS\lay-gway-f.dgn



ROUTE NO.	SECTION	COUNTY	TOTAL SHEETS	SHEET NO.
F.A.P. 351	2008-001VB	COOK	579	251
STA.		TO STA.		
110		120 130		
FED. ROAD DIST. NO. 7		ILLINOIS	FED. AID PROJECT	
		CONTRACT NO. 60E10		

SCALE
 HORZ.: 1"=10'
 VERT.: 1"=10'

PERMANENT CN GATEWAY LEAD TRACK

REVISIONS	
NAME	DATE
REZ	10/19/07

ILLINOIS DEPARTMENT OF TRANSPORTATION
 US RTE 6 FROM I-294 TO IL RTE 1
 METRA & CN OVER 159TH STREET

TRACK CONSTRUCTION
 PERMANENT CN GATEWAY LEAD TRACK
 CROSS SECTIONS

SHT. 77 OF 88
 DATE 2/21/2008

DRAWN BY REZ
 CHECKED BY RMS