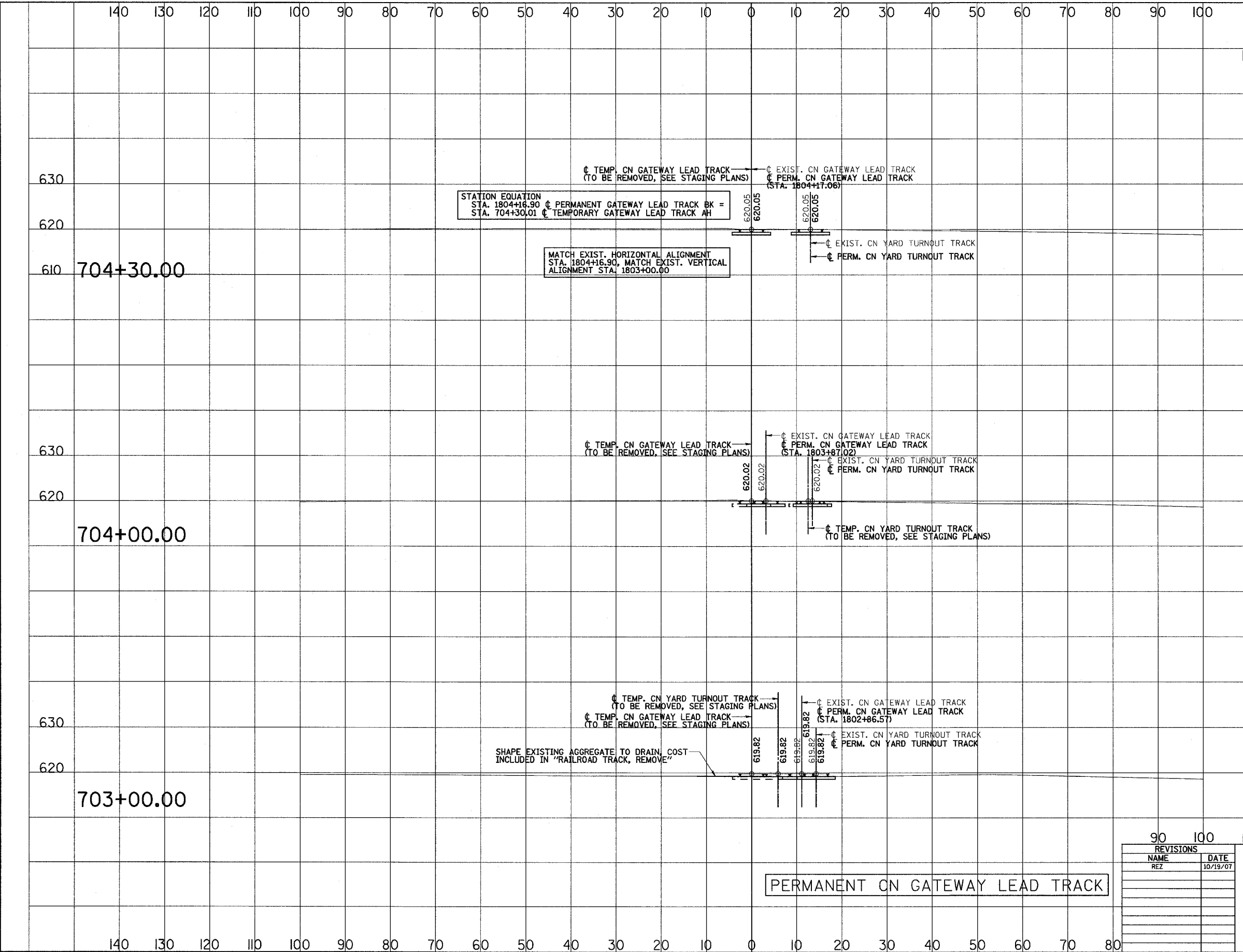


3/13/2008 2:10:00 PM

q:\17049\069\Track & Rail Main Contract\FINAL PLANS\lay-gway-f.dgn



| | | | | |
|-----------------------|------------|--------------------|------------------|----------|
| ROUTE NO. | SECTION | COUNTY | TOTAL SHEETS | SHEET NO |
| F.A.P. 351 | 2008-001VB | COOK | 579 | 254 |
| STA. | | TO STA. | | |
| 120 | | 130 | | |
| FED. ROAD DIST. NO. 7 | | ILLINOIS | FED. AID PROJECT | |
| | | CONTRACT NO. 60E10 | | |

SCALE
 HORZ.: 1"=10'
 VERT.: 1"=10'

STATION EQUATION
 STA. 1804+16.90 ϕ PERMANENT GATEWAY LEAD TRACK BK =
 STA. 704+30.01 ϕ TEMPORARY GATEWAY LEAD TRACK AH

MATCH EXIST. HORIZONTAL ALIGNMENT
 STA. 1804+16.90, MATCH EXIST. VERTICAL
 ALIGNMENT STA. 1803+00.00

PERMANENT CN GATEWAY LEAD TRACK

| REVISIONS | |
|-----------|----------|
| NAME | DATE |
| REZ | 10/19/07 |
| | |
| | |
| | |
| | |
| | |
| | |
| | |
| | |

ILLINOIS DEPARTMENT OF TRANSPORTATION
 US RTE 6 FROM I-294 TO IL RTE 1
 METRA & CN OVER 159TH STREET

TRACK CONSTRUCTION
 PERMANENT CN GATEWAY LEAD TRACK
 CROSS SECTIONS

SHT. 80 OF 88
 DATE 2/21/2008

DRAWN BY REZ
 CHECKED BY RMS