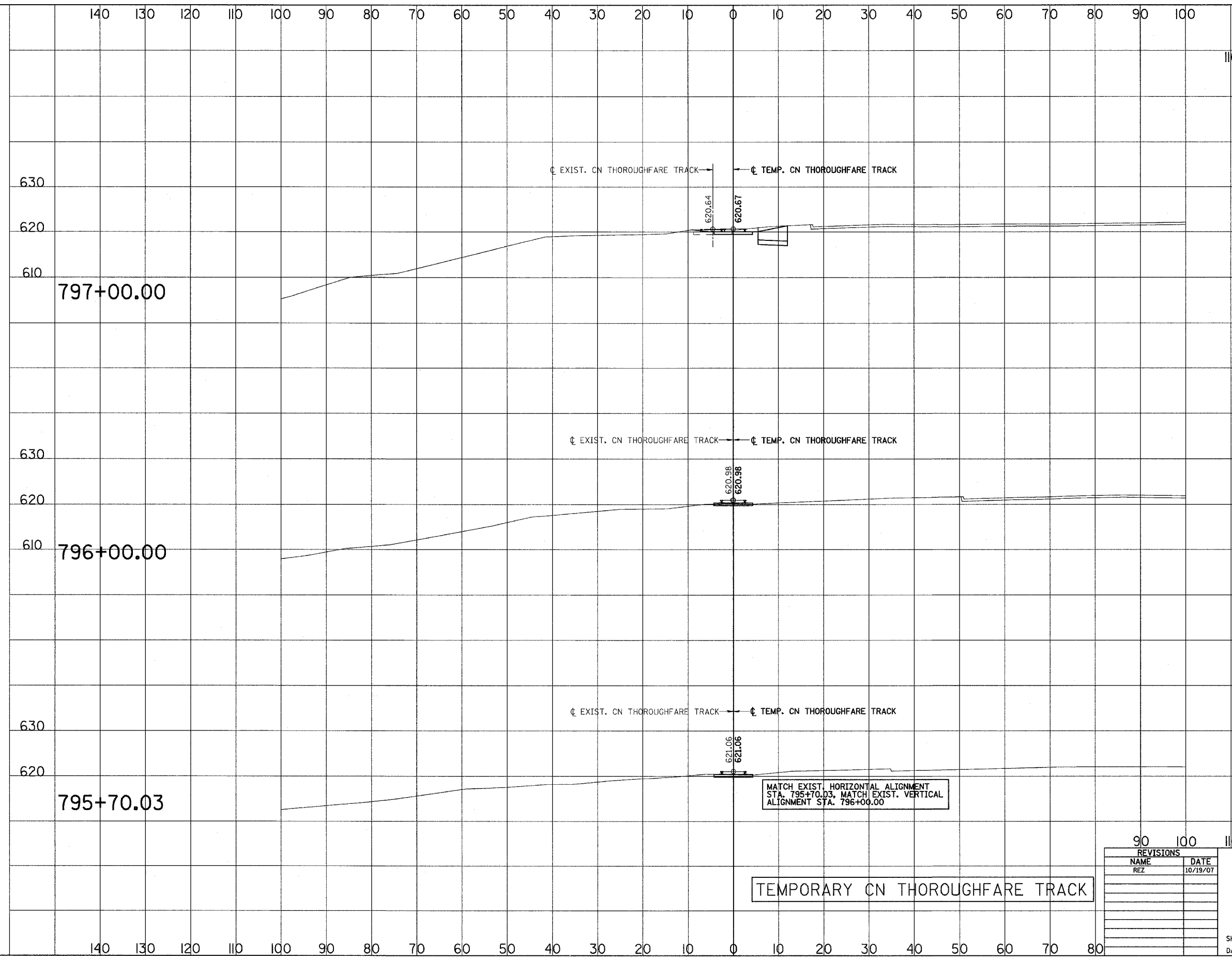


3/13/2008 2:10:01 PM  
 qt:\17049.069\Track & Rail Main Contract\FINAL PLANS\lay\_tfere.dgn

ROUTE NO.	SECTION	COUNTY	TOTAL SHEETS	SHEET NO.
F.A.P. 351	2008-001VB	COOK	579	255
STA.		TO STA.		
120		130		
FED. ROAD DIST. NO. 7 ILLINOIS			FED. AID PROJECT	
			CONTRACT NO. 60E10	

SCALE  
 HORZ.: 1"=10'  
 VERT.: 1"=10'



TEMPORARY CN THOROUGHFARE TRACK

MATCH EXIST. HORIZONTAL ALIGNMENT  
 STA. 795+70.03. MATCH EXIST. VERTICAL  
 ALIGNMENT STA. 796+00.00

REVISIONS	
NAME	DATE
REZ	10/19/07

ILLINOIS DEPARTMENT OF TRANSPORTATION  
 US RTE 6 FROM I-294 TO IL RTE 1  
 METRA & CN OVER 159TH STREET

TRACK CONSTRUCTION  
 TEMPORARY CN THOROUGHFARE  
 CROSS SECTIONS

SHT. 81 OF 88  
 DATE 2/21/2008

DRAWN BY REZ  
 CHECKED BY RMS