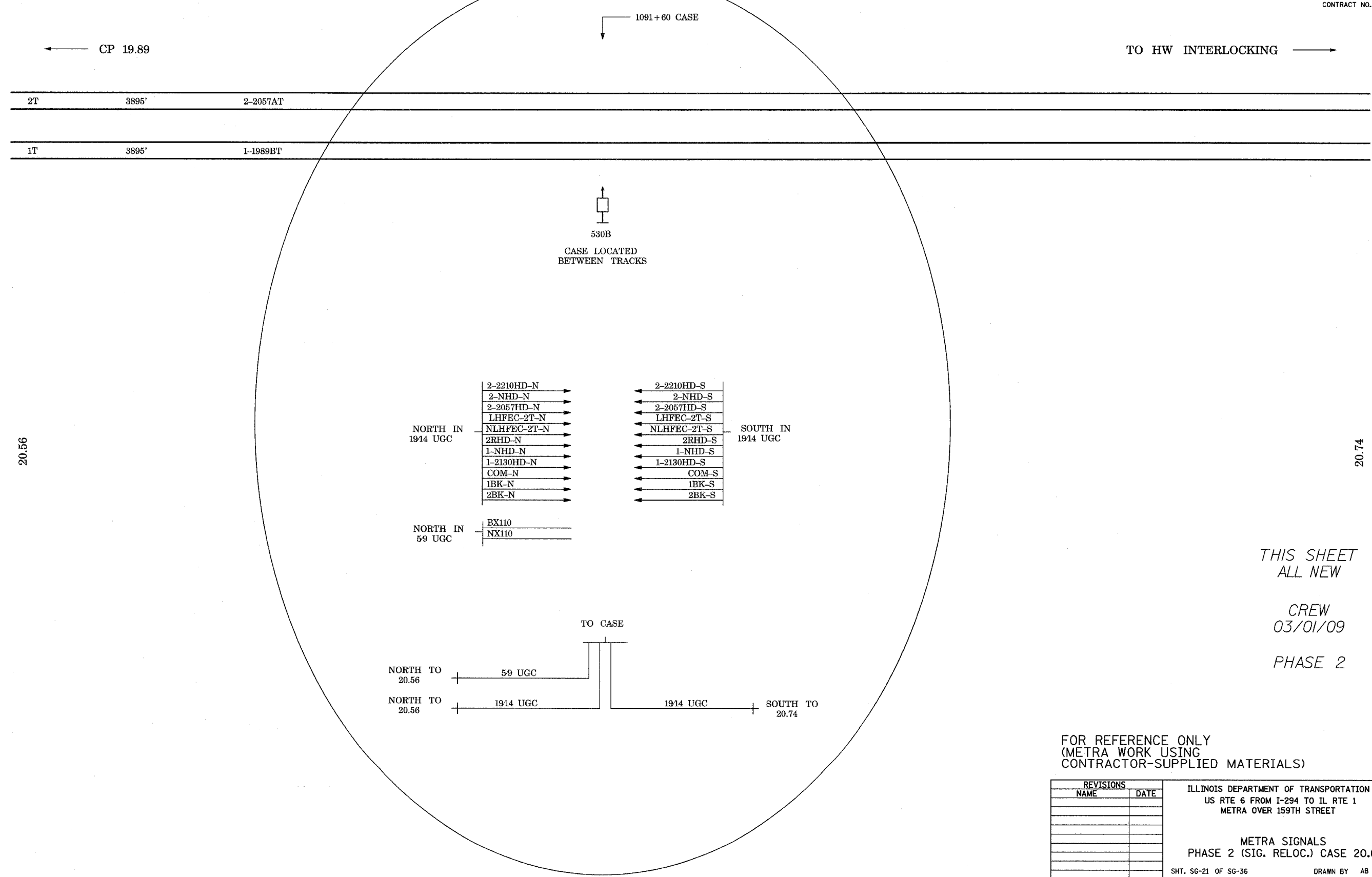


ROUTE NO.	SECTION	COUNTY	TOTAL SHEETS	SHEET NO.
F.A.P. 351	2008-001VB	COOK	579	288
STA.	TO STA.		FED. AID PROJECT	
FED. ROAD DIST. NO. 7		ILLINOIS	CONTRACT NO. 60E10	

4/14/2008 11:43:59 AM

q:\17049\signal work for metra\plans\21_ref.dgn



THIS SHEET
ALL NEW

CREW
03/01/09

PHASE 2

FOR REFERENCE ONLY
(METRA WORK USING
CONTRACTOR-SUPPLIED MATERIALS)

REVISIONS	
NAME	DATE

ILLINOIS DEPARTMENT OF TRANSPORTATION
US RTE 6 FROM I-294 TO IL RTE 1
METRA OVER 159TH STREET

METRA SIGNALS
PHASE 2 (SIG. RELOC.) CASE 20.68

SHT. SG-21 OF SG-36
DATE 4/11/2008

DRAWN BY AB
CHECKED BY MAD