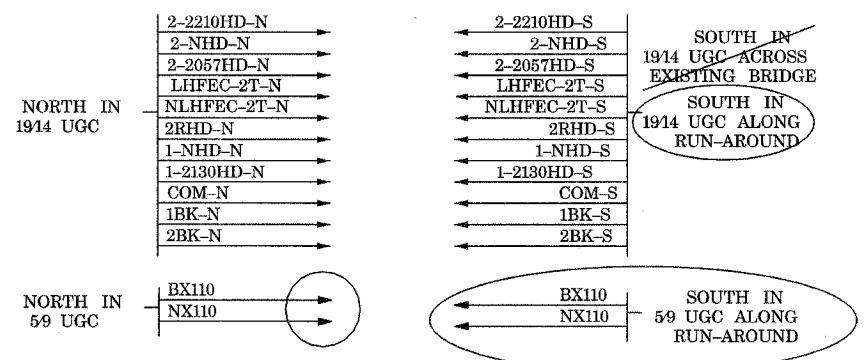
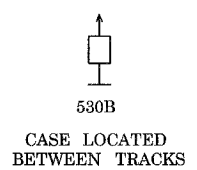
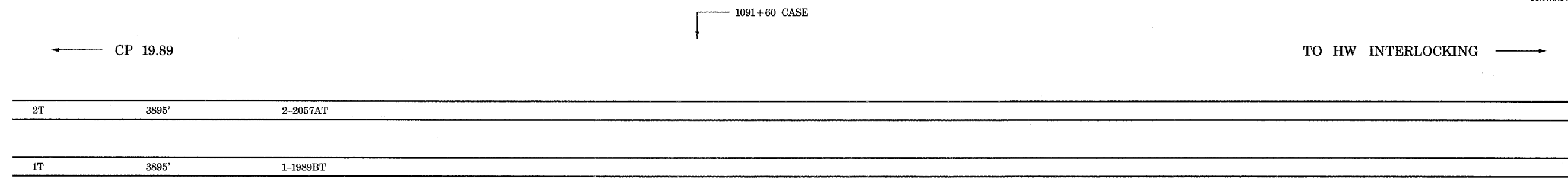


ROUTE NO.	SECTION	COUNTY	TOTAL SHEETS	SHEET NO.
F.A.P. 351	2008-001WB	COOK	579	292
STA.	TO STA.			
FED. ROAD DIST. NO. 7	ILLINOIS	FED. AID PROJECT		
CONTRACT NO. 60E10				

4/14/2008 11:44:00 AM



20.56

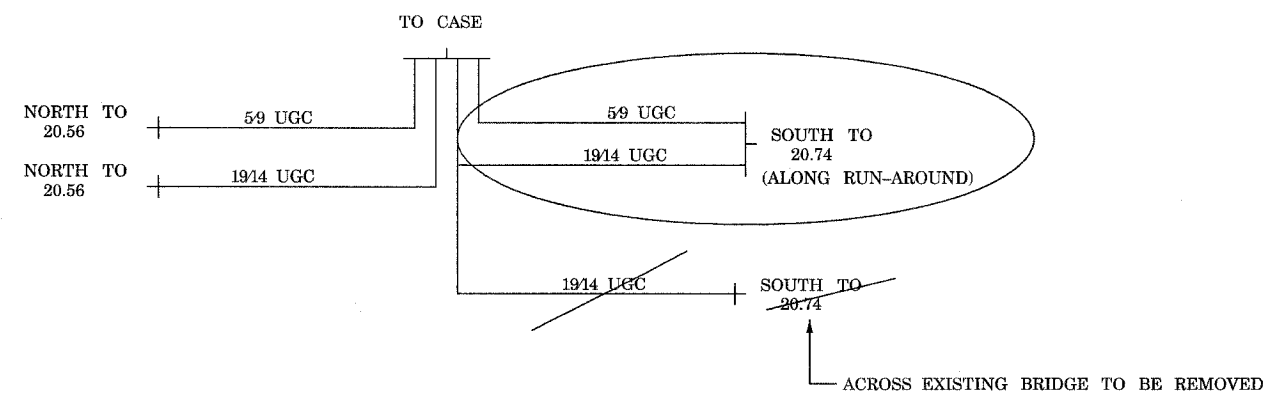
20.74

URS 04/10/08 OK

~~YELLOW~~ - IN
RED - OUT

CREW
07/15/09

PHASE 3



FOR REFERENCE ONLY
(METRA WORK USING
CONTRACTOR-SUPPLIED MATERIALS)

REVISIONS	
NAME	DATE

ILLINOIS DEPARTMENT OF TRANSPORTATION
US RTE 6 FROM I-294 TO IL RTE 1
METRA OVER 159TH STREET

METRA SIGNALS
PHASE 3 (STAGE 1) CASE 20.68

SHT. SG-25 OF SG-36 DRAWN BY AB
DATE 4/11/2008 CHECKED BY MAD

c:\17049\059\signal work for metra\plans\25_ref.dgn