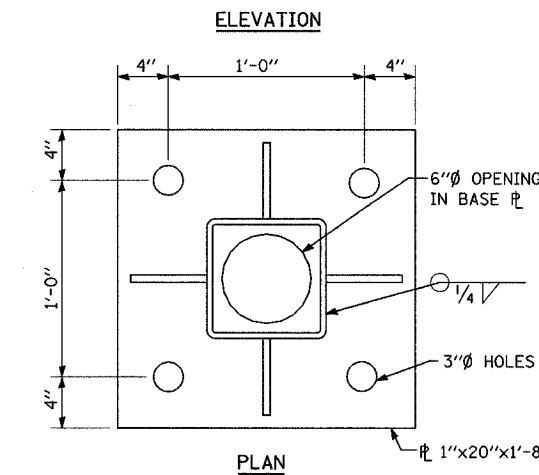
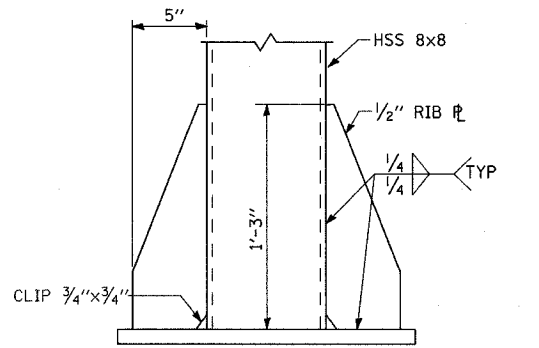


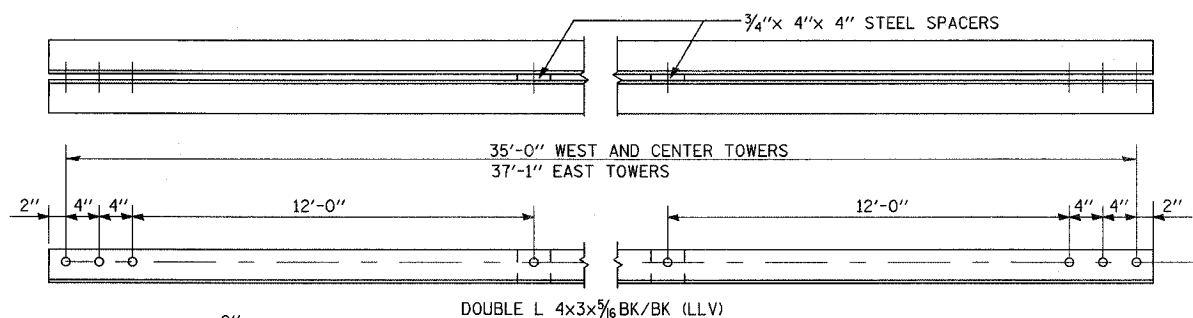
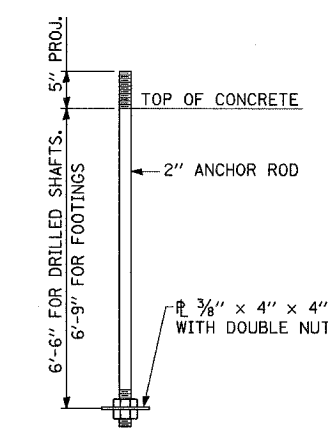
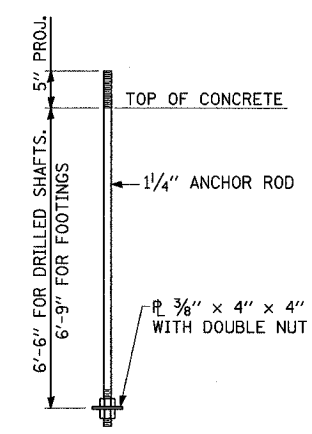
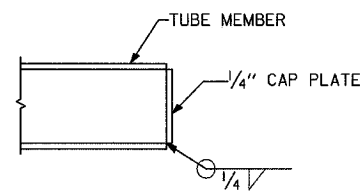
3/13/2008 2:39:21 PM

q:\17049\catenary\plans-catstructures\15.bridge&dead end details.dgn

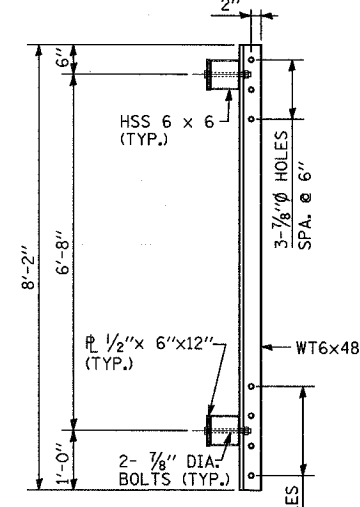
ROUTE NO.	SECTION	COUNTY	TOTAL SHEETS	SHEET NO.
F.A.P. 351	2008-001VB	COOK	579	318
STA.		TO STA.		
FED. ROAD DIST. NO. 7		ILLINOIS FED. AID PROJECT		
CONTRACT NO. 60E10				



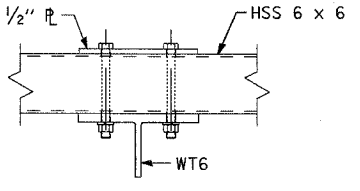
BASE PLATE DETAILS



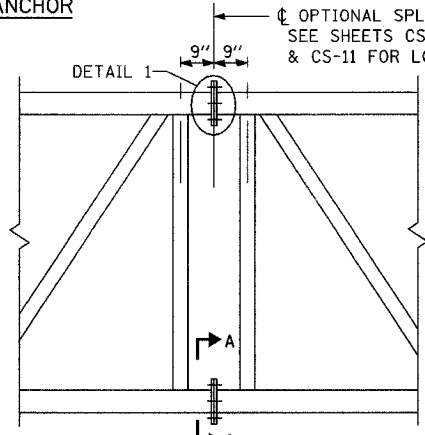
ANCHOR



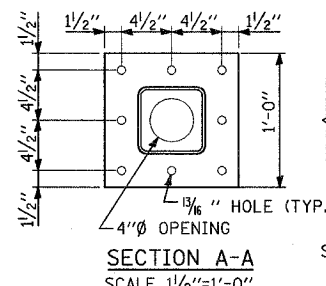
SECTION E-E



SECTION F-F

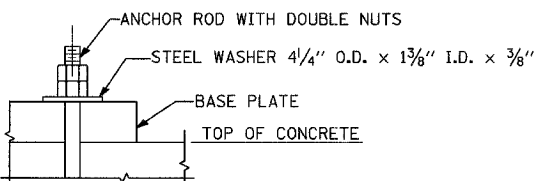


OPTIONAL SPLICE DETAIL

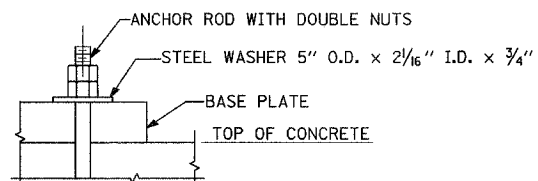


SECTION A-A

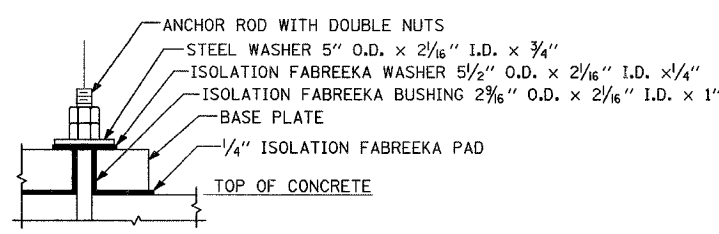
DETAIL 1



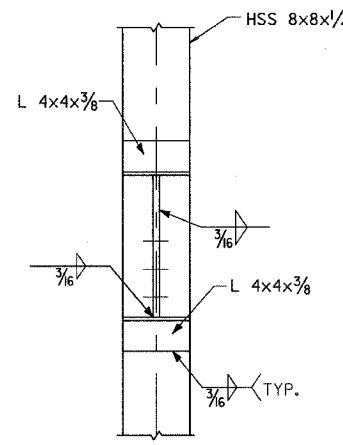
DETAIL AT GUY ANCHOR



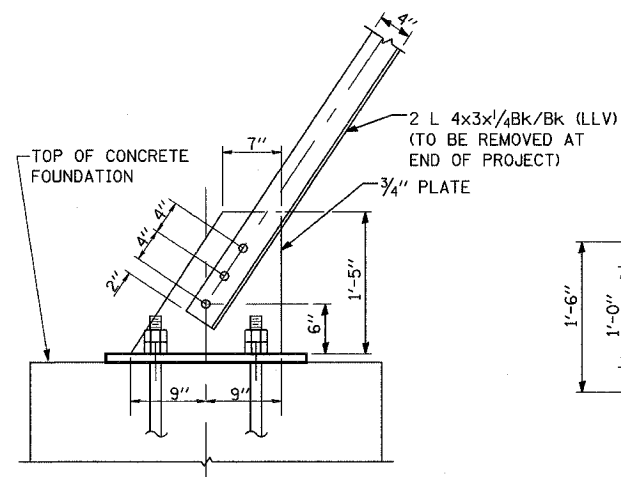
DETAIL AT DEAD-END TOWER LEG



DETAIL AT BRIDGE TOWER LEG



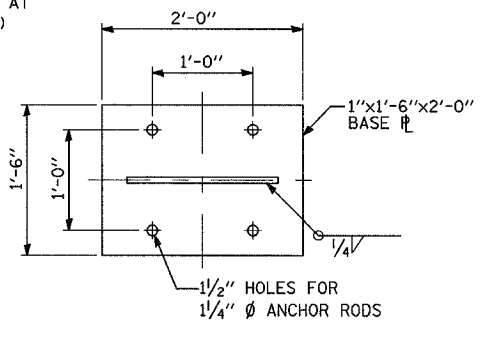
DETAIL 6



ELEVATION

DETAIL 7

(STEEL BRACE ANCHORAGE)



PLAN

GENERAL NOTES FOR CATENARY DEAD-END & BRIDGE STRUCTURES

- HOLLOW STRUCTURAL SHAPES (HSS) SHALL CONFORM TO ASTM A500, GRADE B.
- ALL OTHER STRUCTURAL SHAPES AND PLATES SHALL CONFORM TO ASTM A709, GRADE 50
- BOLTS SHALL BE GALVANIZED HIGH STRENGTH BOLTS CONFORMING TO ASTM A325 WITH MATCHING LOCK NUTS. LOCK NUTS SHALL HAVE NYLON OR STEEL INSERTS.
- ANCHOR RODS, NUTS & WASHERS FOR PERMANENT STRUCTURES SHALL BE HOT-DIPPED GALVANIZED STEEL CONFORMING TO ASTM F1554, GRADE 55.
- ANCHOR RODS, NUTS & WASHERS FOR TEMPORARY STRUCTURES SHALL CONFORM TO ASTM F1554, GRADE 55.
- CONCRETE COMPRESSIVE STRENGTH, F_c = 4,000 PSI.
- STEEL REINFORCEMENT SHALL CONFORM TO ASTM A615, GRADE 60
- VENT HOLES OF ADEQUATE SIZE SHALL BE PROVIDED ON UNDERSIDE AT EACH END OF ALL TUBULAR TRUSS MEMBERS EXCEPT CHORDS. ALL VENT HOLES SHALL BE DRILLED AND DE-BURRED.
- SEE SHEET CS-11 FOR SECTION E-E.
- SEE SHEET CS-10 & CS-11 FOR SECTION F-F.
- ALL WELDING TO BE CONTINUOUS UNLESS OTHERWISE SHOWN.
- ALL WELDING TO BE PERFORMED IN ACCORDANCE WITH CURRENT AWS D1.1 STRUCTURAL WELDING CODE AND THE STANDARD SPECIFICATIONS.
- CAP ALL ENDS OF TUBE SECTIONS WITH WELDED PLATES.
- STAIRS, LADDERS, AND RAILINGS SHALL CONFORM TO OSHA GUIDELINES.

REVISIONS	
NAME	DATE

ILLINOIS DEPARTMENT OF TRANSPORTATION
 US RTE 6 FROM I-294 TO IL RTE 1
 METRA OVER 159TH ST
CATENARY STRUCTURES
BRIDGE & DEAD-END STRUCTURES
DETAILS

SHT. CS-15 OF CS-17
 DATE 2/21/2008
 DRAWN BY SOI
 CHECKED BY DEM