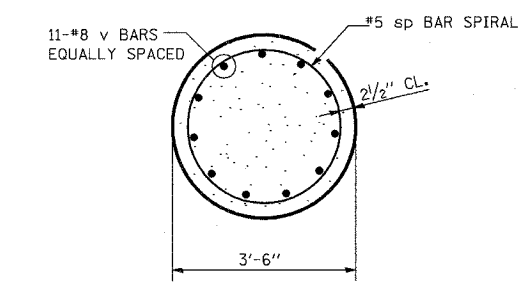
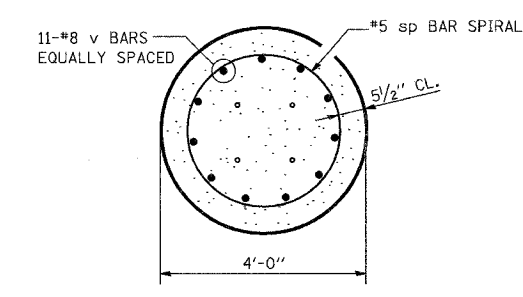
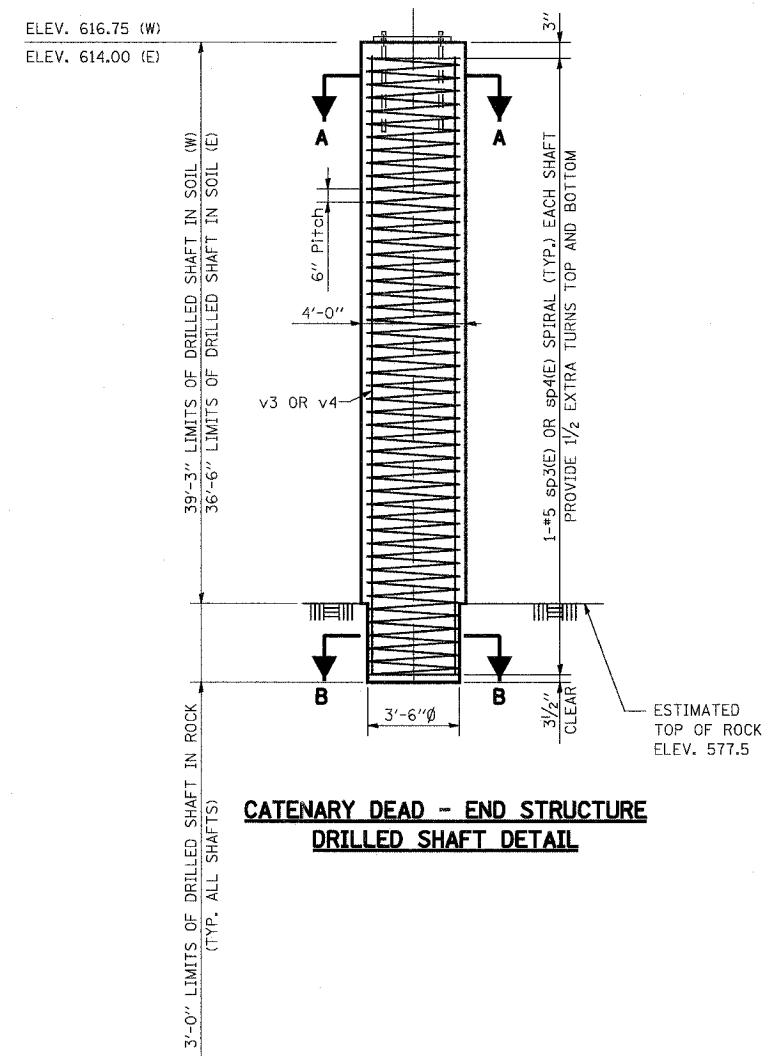
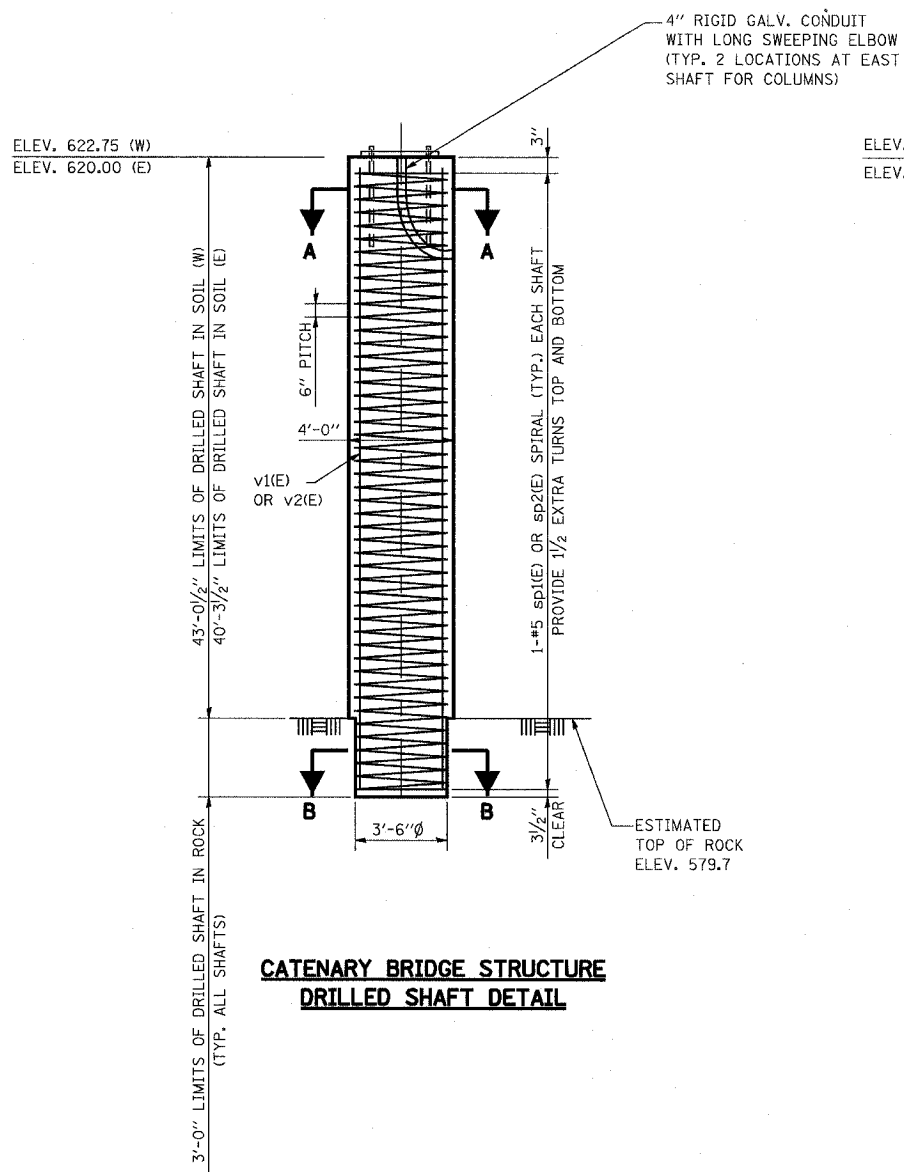


ROUTE NO.	SECTION	COUNTY	TOTAL SHEETS	SHEET NO
F.A.P. 351	2008-001VB	COOK	579	320
STA.	TO STA.			
FED. ROAD DIST. NO. 7	ILLINOIS	FED. AID PROJECT		
CONTRACT NO. 60E10				

3/13/2008 5:49:03 PM

Q:\17049\069\catenary\Plans-CatStructures\17 Drilled Shafts.dgn



**BILL OF MATERIAL**

BAR	NO.	SIZE	LENGTH	SHAPE
sp1(E)	3	#5	45'-6"	WWW
sp2(E)	3	#5	42'-9"	WWW
sp3	3	#5	41'-8"	WWW
sp4	3	#5	39'-11"	WWW
v1(E)	33	#8	45'-6"	---
v2(E)	33	#8	42'-9"	---
v3	33	#8	41'-8"	---
v4	33	#8	39'-11"	---
<b>ITEM</b>		<b>UNIT</b>	<b>QUANTITY</b>	
DRILLED SHAFT IN SOIL		Cu. Yd.	222	
DRILLED SHAFT IN ROCK		Cu. Yd.	13	
REINFORCEMENT BARS		Pound	12,320	
REINFORCEMENT BARS, EPOXY COATED		Pound	13,310	

**NOTES:**

- TOPS OF THE DRILLED SHAFTS SHALL BE FLAT AND LEVEL.
- LENGTH OF SPIRAL GIVEN IS HEIGHT OF SPIRAL. WEIGHT INCLUDES WEIGHT OF SPACERS FOR SPIRAL.
- DRILLED SHAFTS SHALL BE DRILLED TO ELEVATION SHOWN. QUANTITIES AND DETAILING ARE FOR THE ESTIMATED ELEVATIONS SHOWN ON THE PLANS THE ACTUAL CONDITIONS ENCOUNTERED IN EACH SHAFT MAY DIFFER AND THE DRILLED SHAFT AND REINFORCEMENT QUANTITIES SHALL BE ADJUSTED ACCORDINGLY AS DIRECTED BY THE ENGINEER AND PAID FOR AT THE CORRESPONDING UNIT BID PRICE.

REVISIONS	
NAME	DATE

ILLINOIS DEPARTMENT OF TRANSPORTATION  
US RTE 6 FROM I-294 TO IL RTE 1  
METRA OVER 159TH ST

**CATENARY STRUCTURES  
BRIDGE & DEAD-END STRUCTURES  
DRILLED SHAFT DETAILS**

SHT. CS-17 OF CS-17  
DATE 2/21/2008

DRAWN BY DRS  
CHECKED BY MAD