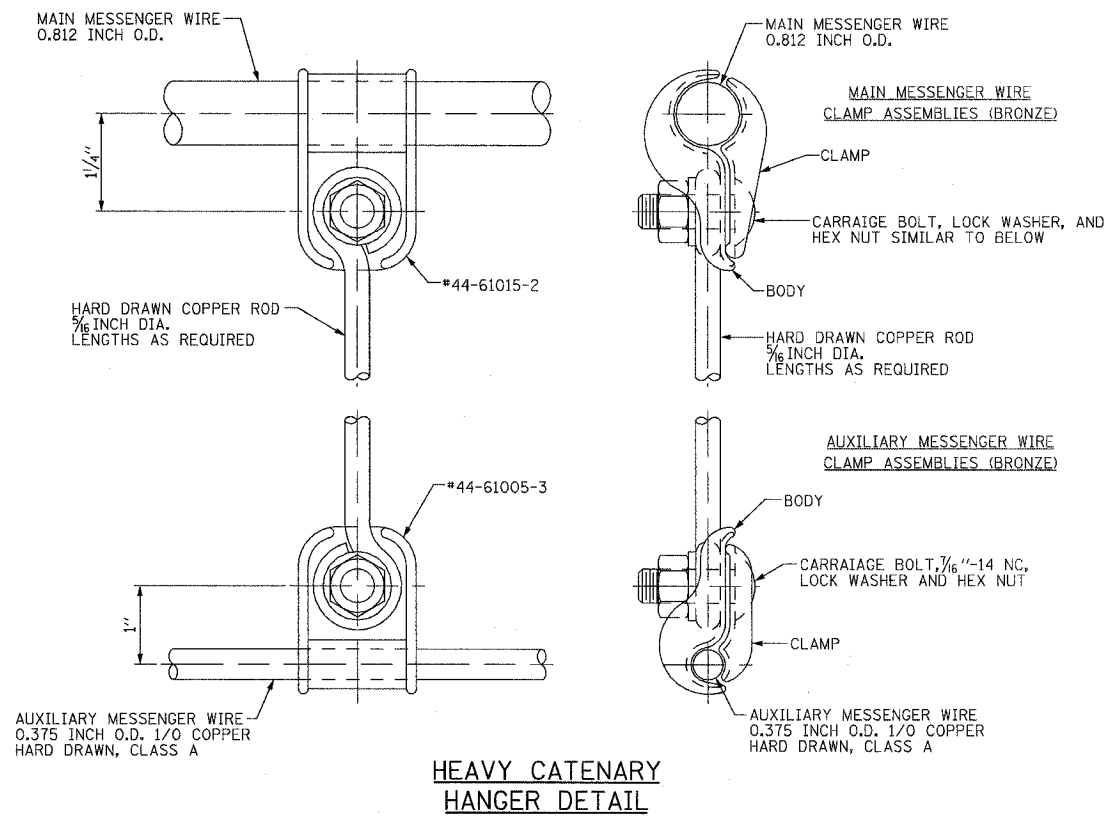


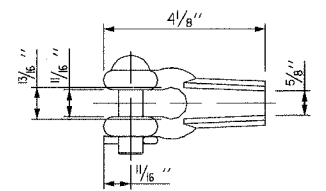
3/13/2008 2:39:24 PM

q:\17049\069\catenary\plans-cathardware\03 catenary hardware details 1.dgn

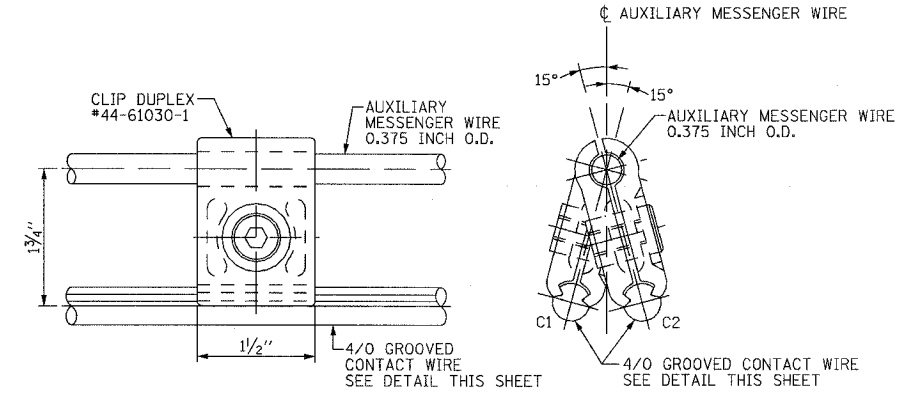
ROUTE NO.	SECTION	COUNTY	TOTAL SHEETS	SHEET NO.
F.A.P. 351	2008-001VB	COOK	579	323
STA.		TO STA.		
FED. ROAD DIST. NO. 7		ILLINOIS	FED. AID PROJECT	
CONTRACT NO. 60E10				



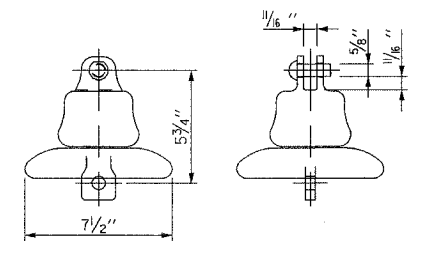
**HEAVY CATENARY HANGER DETAIL**



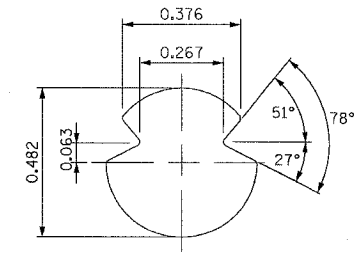
**THIMBLE CLEVIS DETAIL**  
#44-84550-1



**DUPLEX CLIP DETAIL**



**INSULATOR DETAIL**  
#44-68005-6



**4/0 GROOVED CONTACT WIRE DETAIL**  
#44-56217-1

NOTE:  
PART NUMBERS SHOWN AS #44-XXXX-X  
ARE METRA PART NUMBERS.

REVISIONS	
NAME	DATE

ILLINOIS DEPARTMENT OF TRANSPORTATION  
US RTE 6 FROM I-294 TO IL RTE 1  
METRA OVER 159TH STREET

CATENARY HARDWARE  
DETAILS SHEET 1

SHT. CH-03 OF CH-20  
DATE 2/21/2008  
DRAWN BY PMV  
CHECKED BY DEY