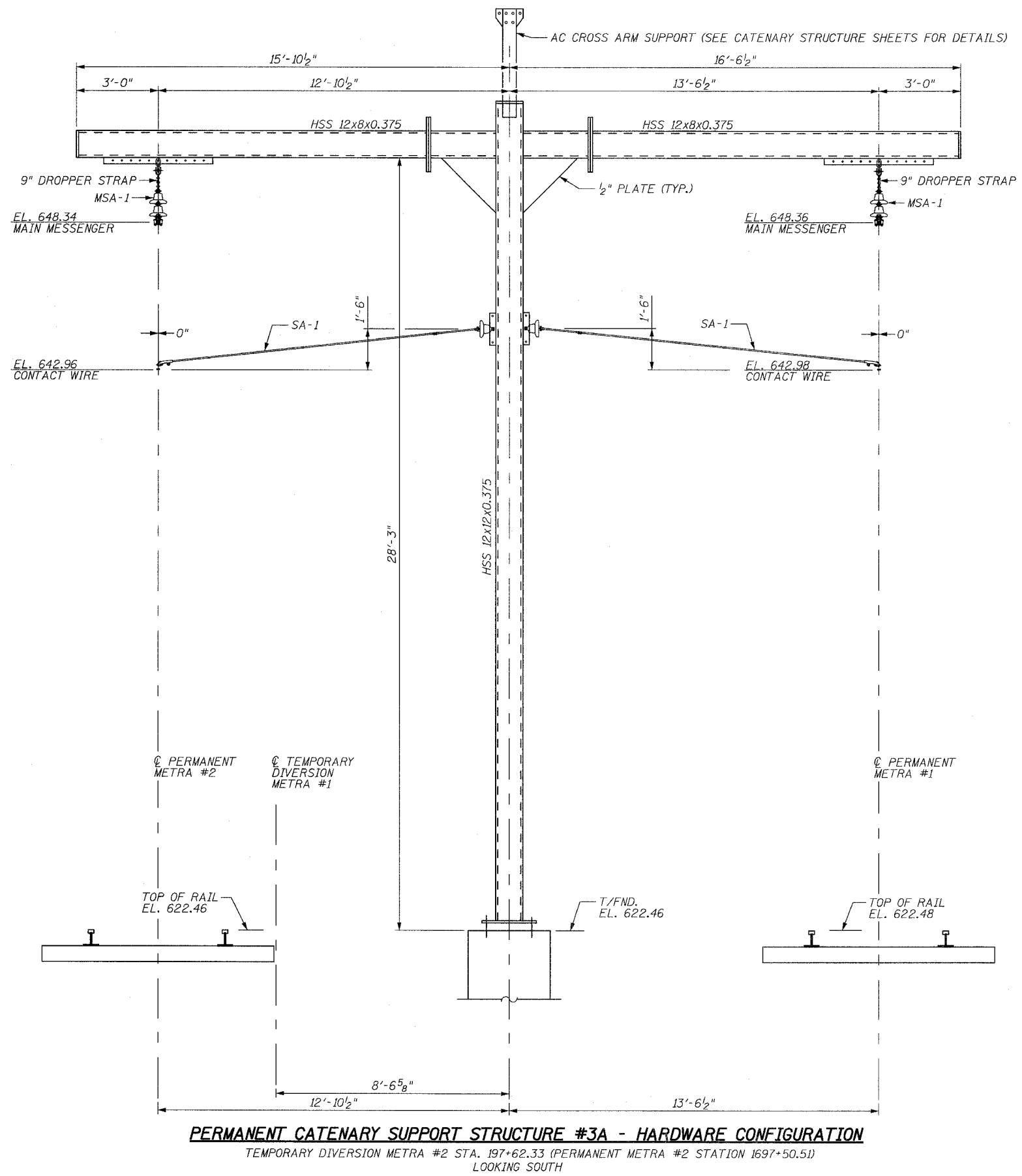


3/13/2008 2:39:31 PM

q:\17049\catenary\plans-cathardware\pole 3a perm hardware.dgn

ROUTE NO.	SECTION	COUNTY	TOTAL SHEETS	SHEET NO.
F.A.P. 351	2008-001VB	COOK	579	330
STA.		TO STA.		
FED. ROAD DIST. NO. 7		ILLINOIS	FED. AID PROJECT	
CONTRACT NO. 60E10				



**BILL OF MATERIAL**

QTY.	UNIT	MARK	DESCRIPTION	REF. DWG.
2	EACH	MSA-1	MESSENGER SUPPORT ASSEMBLY	CH-05
2	EACH	SA-1	STEADY ARM ASSEMBLY	CH-04

REVISIONS	
NAME	DATE

ILLINOIS DEPARTMENT OF TRANSPORTATION  
 US RTE 6 FROM I-294 TO IL RTE 1  
 METRA OVER 159TH STREET

CATENARY HARDWARE  
 CATENARY SUPP. STR. #3A

SHT. CH-10 OF CH-20  
 DATE 2/21/2008

DRAWN BY FMV  
 CHECKED BY MAD