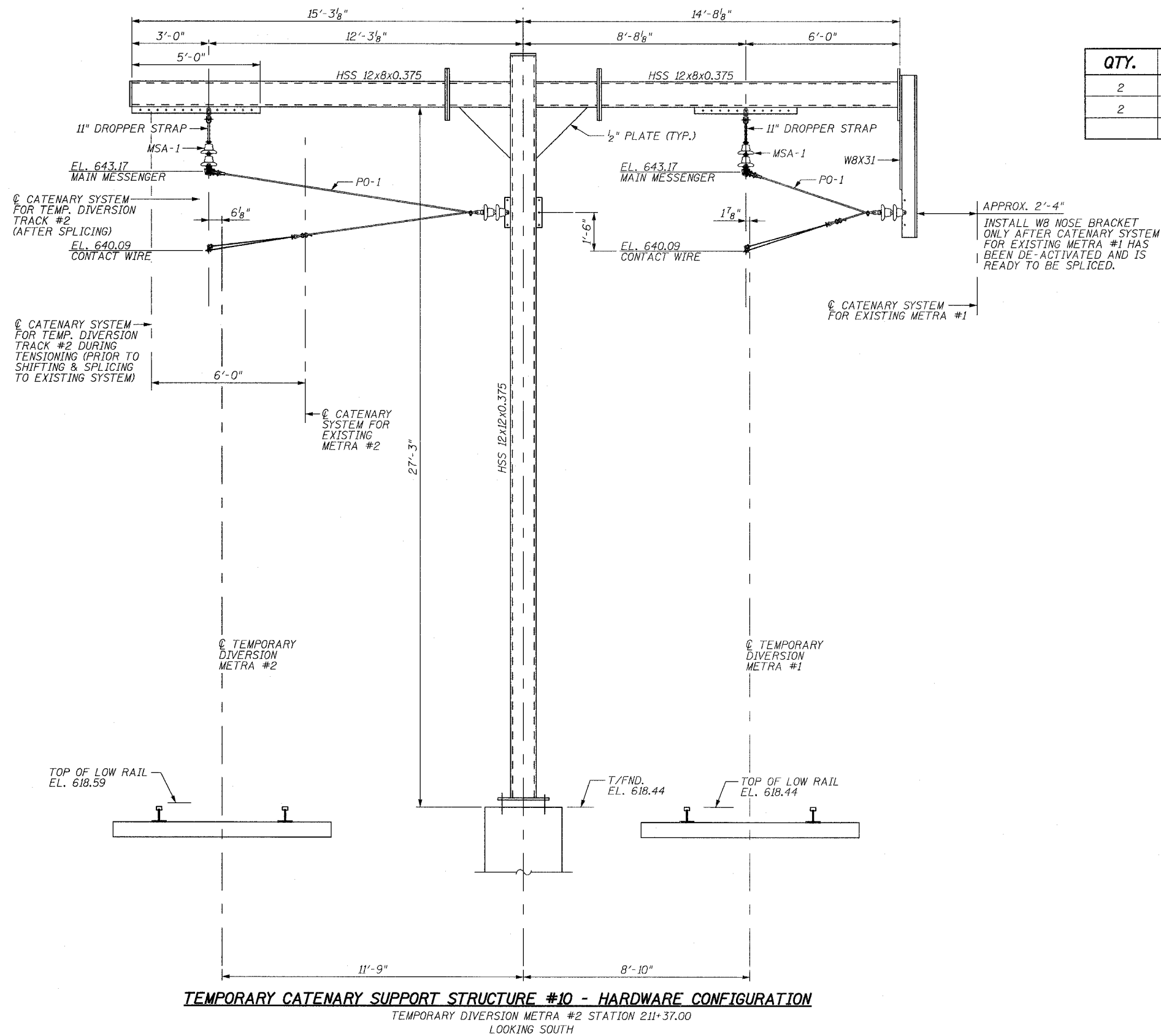


ROUTE NO.	SECTION	COUNTY	TOTAL SHEETS	SHEET NO.
F.A.P. 351	2008-001VB	COOK	579	338
STA.		TO STA.		
FED. ROAD DIST. NO. 7		ILLINOIS	FED. AID PROJECT	
CONTRACT NO. 60E10				

BILL OF MATERIAL

QTY.	UNIT	MARK	DESCRIPTION	REF. DWG.
2	EACH	MSA-1	MESSENGER SUPPORT ASSEMBLY	CH-05
2	EACH	P0-1	PULL-OFF ASSEMBLY	CH-04



REVISIONS	
NAME	DATE

ILLINOIS DEPARTMENT OF TRANSPORTATION
 US RTE 6 FROM I-294 TO IL RTE 1
 METRA OVER 159TH STREET

CATENARY HARDWARE
 TEMP. CATENARY SUPP. STR. #10

SHT. CH-18 OF CH-20
 DATE 2/21/2008

DRAWN BY PMV
 CHECKED BY MAD

3/13/2008 2:39:36 PM

q:\17049\059\catenary\plans-cathardware\pole 10 temp hardware.dgn