

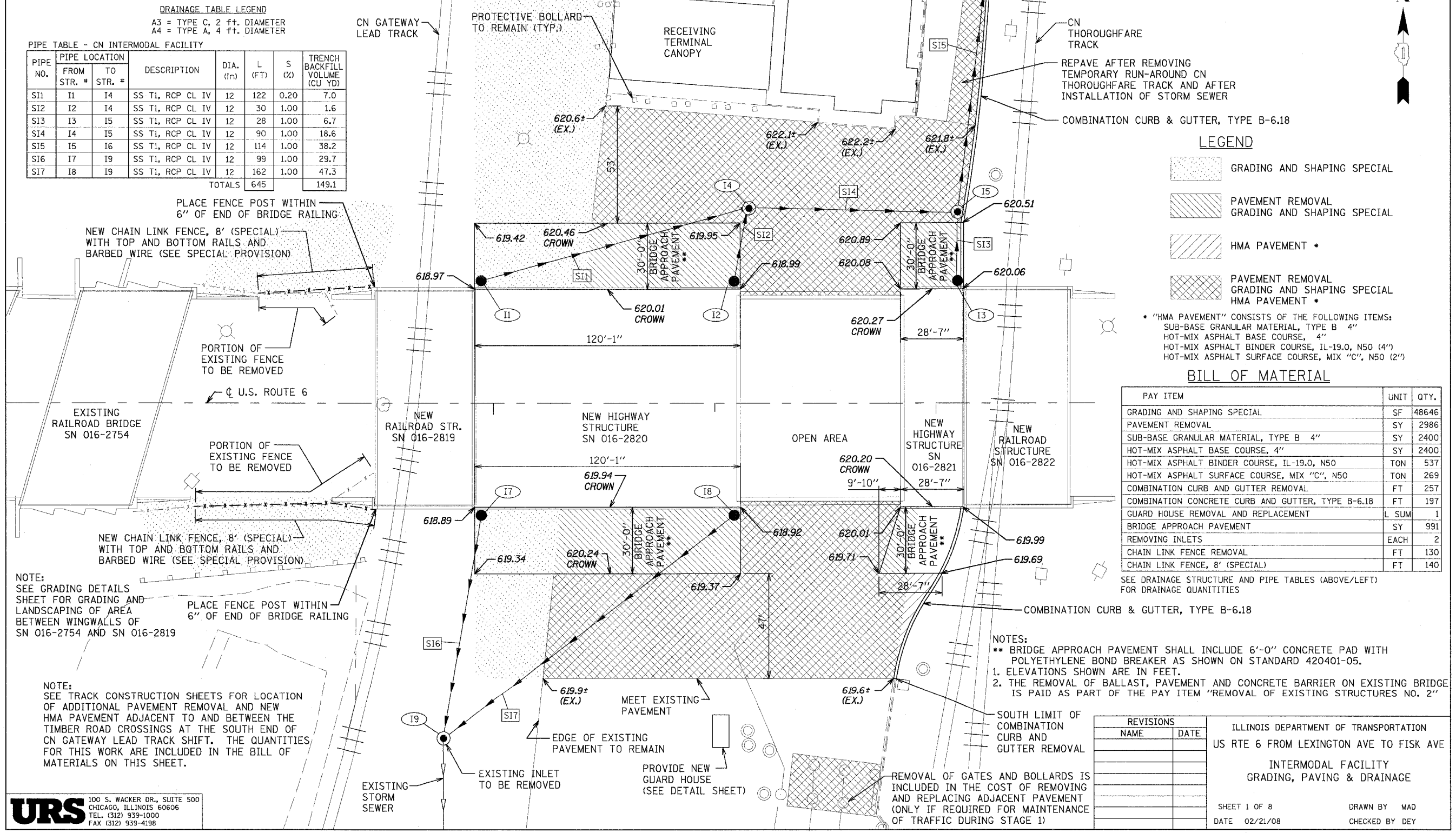
DRAINAGE STRUCTURE TABLE - CN INTERMODAL FACILITY

NO.	STA. (FT)	OFFSET (FT)	STRUCTURE TYPE/SIZE				FRAME & GRATE	INVERT (FT)				RIM EL. (FT)
			MH	CB	INL	OTHER		N	S	E	W	
I1	93+94.4	55.1 LT	A3				T-1-OL			617.86		618.9
I2	95+08.8	55.1 LT	A3				T-1-OL	617.92				618.9
I3	96+09.8	55.1 LT	A3				T-1-OL	617.00				620.0
I4	95+15.6	87.8 LT	A4				T-1-CL		617.62	617.62	617.62	620.0
I5	96+09.8	86.2 LT	A4				T-1-CL	616.72	616.72		616.72	620.6
I6	96+24.4	203.1 LT	A4				T-1-OL	615.58	615.58			620.4
I7	93+94.4	50.7 RT	A3				T-1-OL		614.88			618.8
I8	95+08.8	50.7 RT	A3				T-1-OL		615.03			618.8
I9	93+77.2	152.0 RT	A4				T-1-OL	613.89	613.89	613.89		618.0
TOTALS			4	5								

PIPE TABLE - CN INTERMODAL FACILITY

PIPE NO.	PIPE LOCATION		DESCRIPTION	DIA. (IN)	L (FT)	S (%)	TRENCH BACKFILL VOLUME (CU YD)
	FROM STR. #	TO STR. #					
SI1	I1	I4	SS T1, RCP CL IV	12	122	0.20	7.0
SI2	I2	I4	SS T1, RCP CL IV	12	30	1.00	1.6
SI3	I3	I5	SS T1, RCP CL IV	12	28	1.00	6.7
SI4	I4	I5	SS T1, RCP CL IV	12	90	1.00	18.6
SI5	I5	I6	SS T1, RCP CL IV	12	114	1.00	38.2
SI6	I7	I9	SS T1, RCP CL IV	12	99	1.00	29.7
SI7	I8	I9	SS T1, RCP CL IV	12	162	1.00	47.3
TOTALS					645		149.1

F.A.P. RTE.	SECTION	COUNTY	TOTAL SHEETS	SHEET NO.
351	2008-001VB	COOK	579	341
STA.		TO STA.		
FED. ROAD DIST. NO.		ILLINOIS FED. AID PROJECT		
CONTRACT NO. 60E10				



LEGEND

- GRADING AND SHAPING SPECIAL
- PAVEMENT REMOVAL
- GRADING AND SHAPING SPECIAL
- HMA PAVEMENT *
- PAVEMENT REMOVAL
- GRADING AND SHAPING SPECIAL
- HMA PAVEMENT *

* "HMA PAVEMENT" CONSISTS OF THE FOLLOWING ITEMS:
 SUB-BASE GRANULAR MATERIAL, TYPE B 4"
 HOT-MIX ASPHALT BASE COURSE, 4"
 HOT-MIX ASPHALT BINDER COURSE, 1L-19.0, N50 (4")
 HOT-MIX ASPHALT SURFACE COURSE, MIX "C", N50 (2")

BILL OF MATERIAL

PAY ITEM	UNIT	QTY.
GRADING AND SHAPING SPECIAL	SF	48646
PAVEMENT REMOVAL	SY	2986
SUB-BASE GRANULAR MATERIAL, TYPE B 4"	SY	2400
HOT-MIX ASPHALT BASE COURSE, 4"	SY	2400
HOT-MIX ASPHALT BINDER COURSE, 1L-19.0, N50	TON	537
HOT-MIX ASPHALT SURFACE COURSE, MIX "C", N50	TON	269
COMBINATION CURB AND GUTTER REMOVAL	FT	257
COMBINATION CONCRETE CURB AND GUTTER, TYPE B-6.18	FT	197
GUARD HOUSE REMOVAL AND REPLACEMENT	L SUM	1
BRIDGE APPROACH PAVEMENT	SY	991
REMOVING INLETS	EACH	2
CHAIN LINK FENCE REMOVAL	FT	130
CHAIN LINK FENCE, 8" (SPECIAL)	FT	140

SEE DRAINAGE STRUCTURE AND PIPE TABLES (ABOVE/LEFT) FOR DRAINAGE QUANTITIES

NOTES:
 ** BRIDGE APPROACH PAVEMENT SHALL INCLUDE 6'-0" CONCRETE PAD WITH POLYETHYLENE BOND BREAKER AS SHOWN ON STANDARD 420401-05.
 1. ELEVATIONS SHOWN ARE IN FEET.
 2. THE REMOVAL OF BALLAST, PAVEMENT AND CONCRETE BARRIER ON EXISTING BRIDGE IS PAID AS PART OF THE PAY ITEM "REMOVAL OF EXISTING STRUCTURES NO. 2"

NOTE:
 SEE GRADING DETAILS SHEET FOR GRADING AND LANDSCAPING OF AREA BETWEEN WINGWALLS OF SN 016-2754 AND SN 016-2819

NOTE:
 SEE TRACK CONSTRUCTION SHEETS FOR LOCATION OF ADDITIONAL PAVEMENT REMOVAL AND NEW HMA PAVEMENT ADJACENT TO AND BETWEEN THE TIMBER ROAD CROSSINGS AT THE SOUTH END OF CN GATEWAY LEAD TRACK SHIFT. THE QUANTITIES FOR THIS WORK ARE INCLUDED IN THE BILL OF MATERIALS ON THIS SHEET.

REVISIONS

NAME	DATE

ILLINOIS DEPARTMENT OF TRANSPORTATION
 US RTE 6 FROM LEXINGTON AVE TO FISK AVE
 INTERMODAL FACILITY
 GRADING, PAVING & DRAINAGE

SHEET 1 OF 8
 DATE 02/21/08
 DRAWN BY MAD
 CHECKED BY DEY