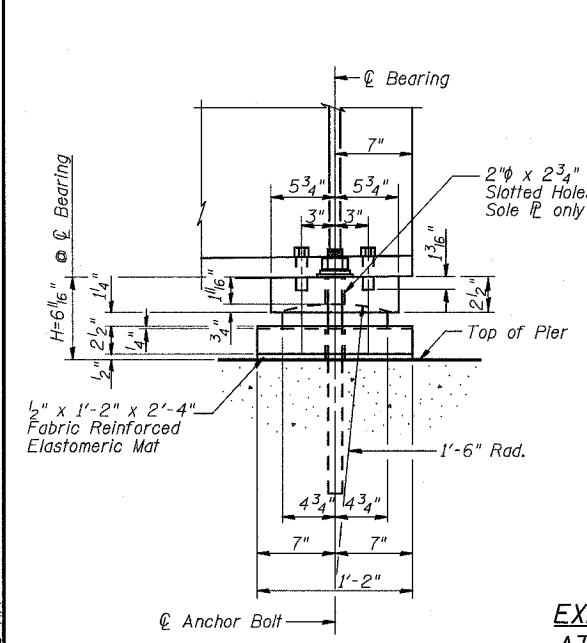


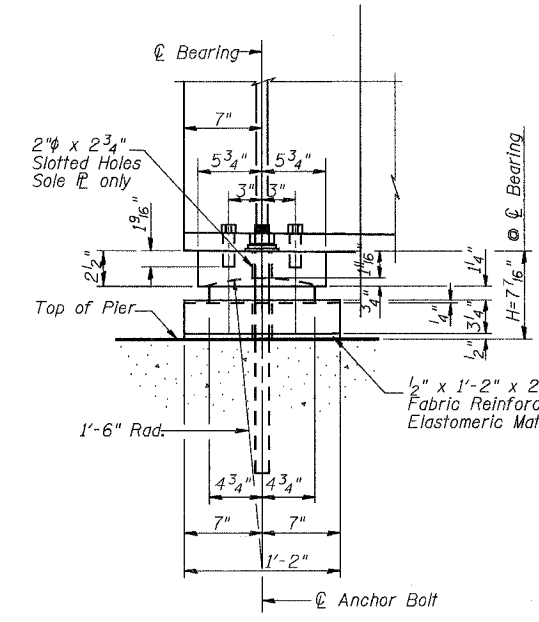
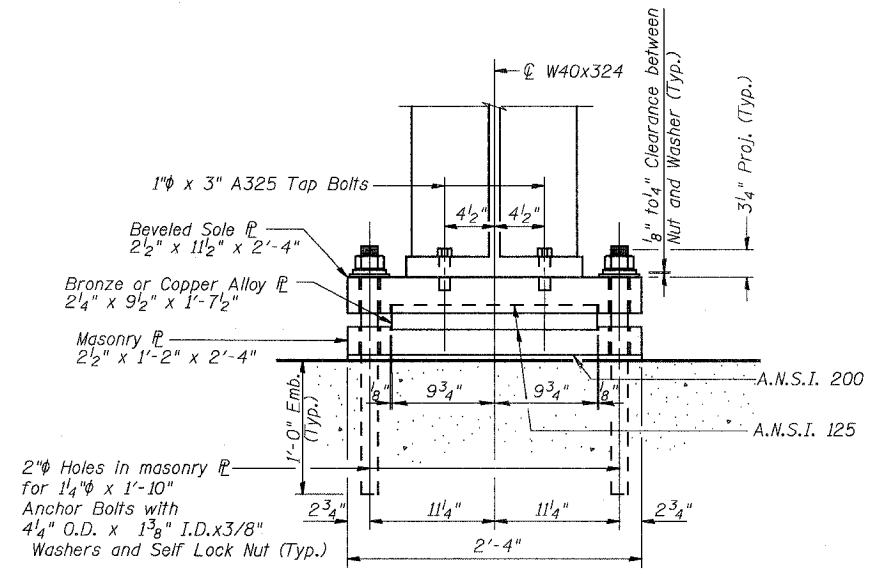
STATE OF ILLINOIS
DEPARTMENT OF TRANSPORTATION

ROUTE NO.	SECTION	COUNTY	TOTAL SHEETS	SHEET NO.
F.A.P. 351	2008-001VB	COOK	579	360
FED. ROAD DIST. NO. 7 ILLINOIS FED. AID PROJECT-				
CONTRACT NO. 60E10				

SHEET NO. 12
37 SHEETS



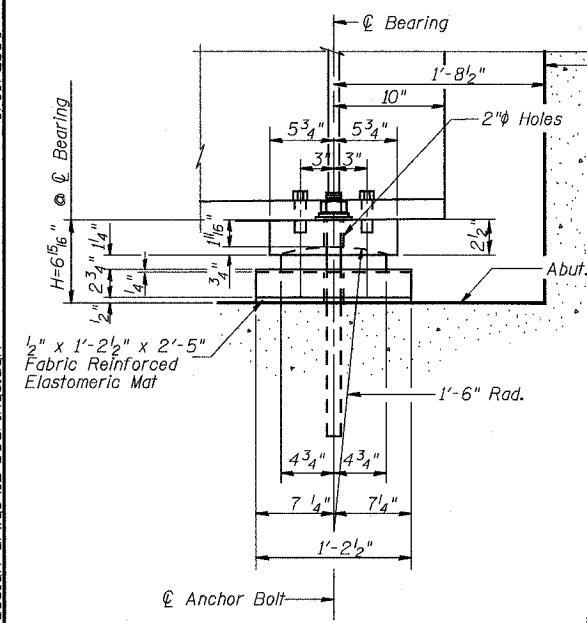
**EXPANSION BEARING
AT PIER, SPAN 1**



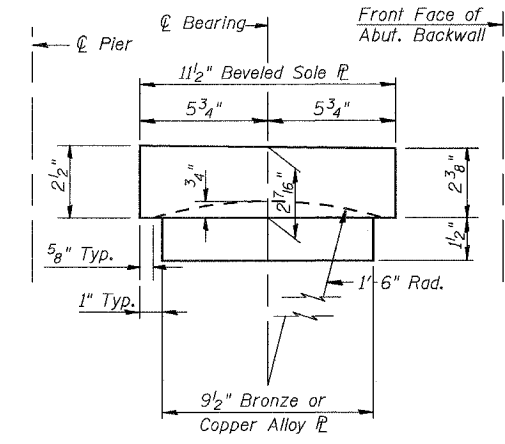
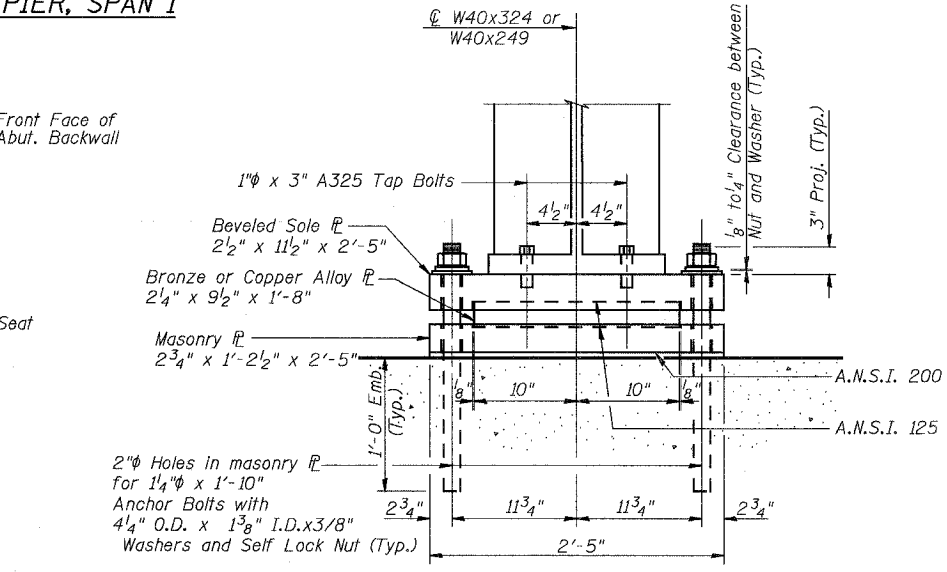
**EXPANSION BEARING
AT PIER, SPAN 2**

Notes:

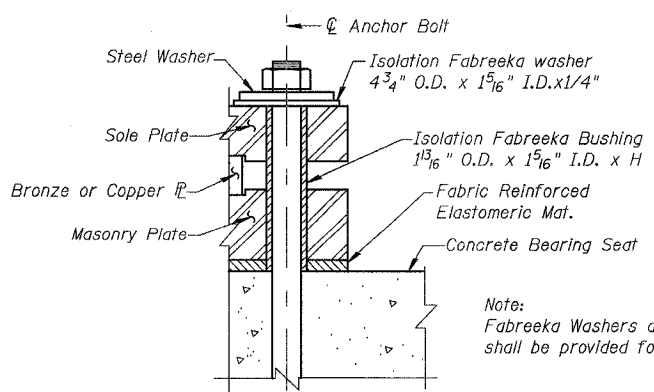
- All material for Sole Plates and Masonry Plates shall conform to A.S.T.M. Specification A36 Steel.
- Bronze Bearing and Expansion plates shall conform to A.S.T.M. B22, Alloy C91300 or C91100. Solid lubricant shall be in accordance with A.R.E.M.A. Chapter 15. Section 10.4.2.3. Cost is included in Furnishing and Erecting Structural Steel.
- All Structural Steel Bearing Plates shall be Flat Rolled Steel Plates with all surfaces smooth and free from warp and all edges smooth, & straight.
- All Plate cuts shall be Machine or Machine Flame Cuts.
- See Section 1028 of the Standard Specifications for material requirements for fabric reinforced elastomeric mats, washers and bushings. Cost included in Concrete Structures.
- Anchor Bolts shall be galvanized high-strength carbon steel conforming to the requirements of ASTM F1554, Grade 105 with zinc plated (ASTM B633). Nuts meeting the requirements ASTM A563, Grade DH and washers meeting the requirements of ASTM F436, Type 1, hot dip galvanized.
- Holes in the concrete seats for anchor bolts shall be drilled through the masonry plates to the diameter and depth shown or according to the anchor bolt manufacturer's recommendation after beams or girders have been erected and adjusted.
- Prior to setting the anchor bolts, the holes shall be dry and all dust and loose particles shall be removed by the use of compressed air or vacuuming. Anchor bolts shall not be disturbed until cure time has elapsed.



**FIXED BEARING
(AT ABUTMENTS)**



**BRONZE OR COPPER ALLOY PLATE
AND BEVELED SOLE PLATE**



**CROSS SECTION THRU ANCHOR
BOLT, SOLE & MASONRY PLATES**

Note:
Fabreka Washers and Bushings and Fabric Reinforced Elastomeric Mat shall be provided for all expansion and fixed bearings.

BILL OF MATERIAL

ITEM	UNIT	SUPER	SUB	TOTAL
Anchor Bolts, 1/4"	Each		208	208

DESIGNED	DRS
CHECKED	JJG
DRAWN	SOI
CHECKED	JJG

REVISIONS	
NAME	DATE

ILLINOIS DEPARTMENT OF TRANSPORTATION
US RTE 6 FROM I-294 TO IL RTE 1
BEARINGS

METRA & CN BRIDGE 20.6
OVER U.S. RTE. 6 (159TH STREET)
STATION 91+24.94 STRUCTURE NO. 016-2755
SCALE: DATE: 2/21/2008

URS
100 South Wacker Drive,
Suite 500
Chicago, IL 60606
(312) 939-1000

3/13/2008 9:15:28 AM G:\17049\069\structures\2755_w_r\final_design_dr\wsg\12-bearings.dgn