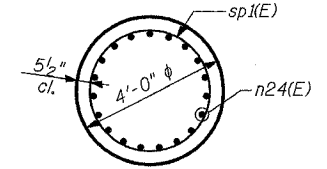


STATE OF ILLINOIS
DEPARTMENT OF TRANSPORTATION

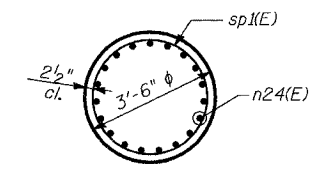
ROUTE NO.	SECTION	COUNTY	TOTAL SHEETS	SHEET NO.
F.A.P. 351	2008-001VB	COOK	579	365
FED. ROAD DIST. NO. 7		ILLINOIS	FED. AID PROJECT-	

SHEET NO. 17
37 SHEETS

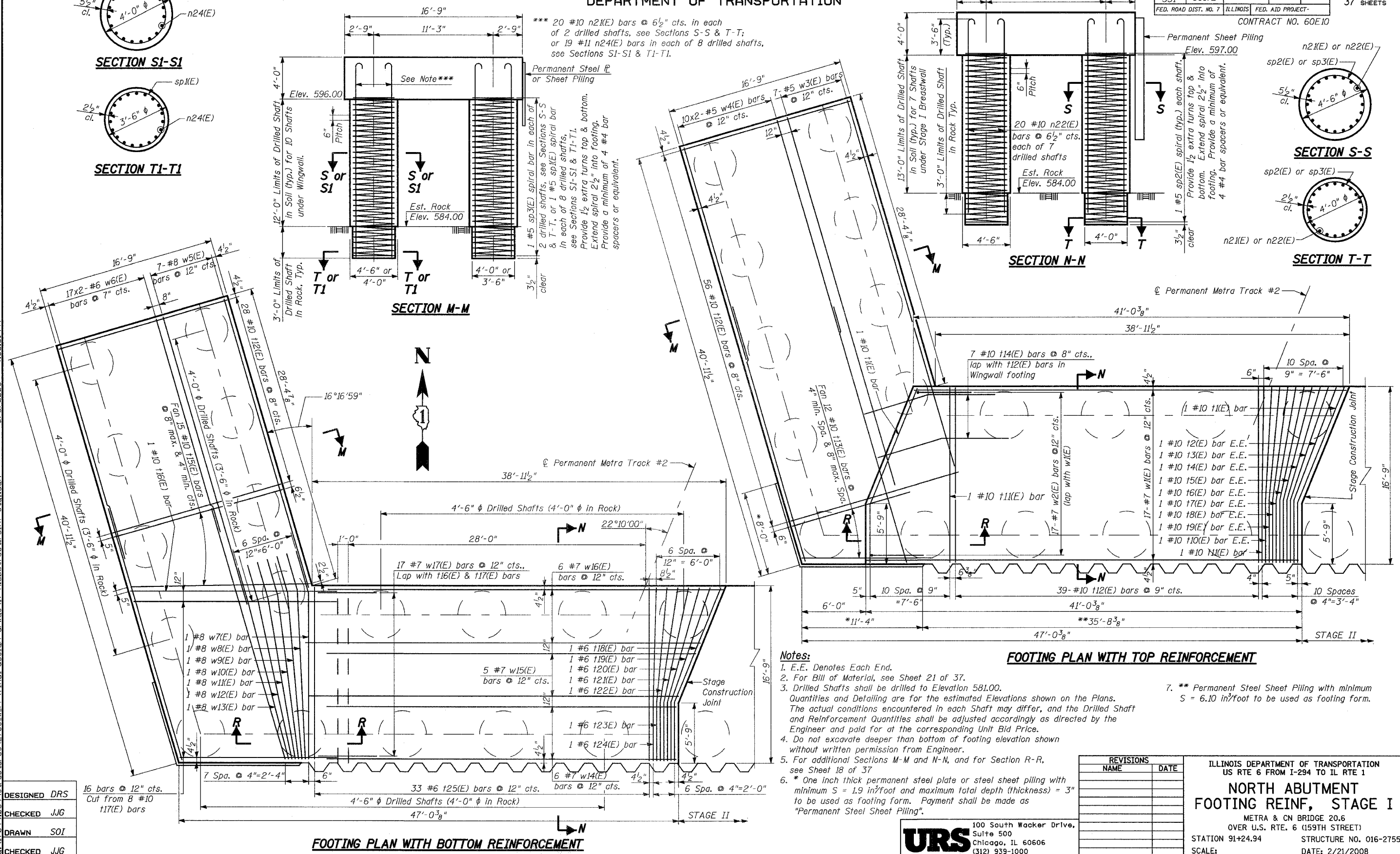
CONTRACT NO. 60E10



SECTION S1-S1



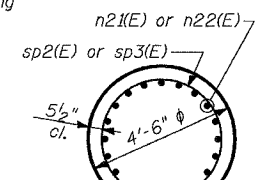
SECTION T1-T1



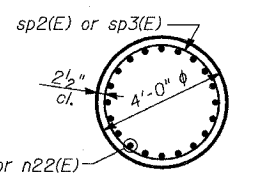
*** 20 #10 n2(E) bars @ 6 1/2" cts. in each of 2 drilled shafts, see Sections S-S & T-T; or 19 #11 n24(E) bars in each of 8 drilled shafts, see Sections S1-S1 & T1-T1.

Permanent Steel Pile or Sheet Piling
See Note***
Elev. 596.00
Elev. 584.00
Est. Rock
Elev. 584.00
1 #5 sp3(E) spiral bar in each of 2 drilled shafts, see Sections S-S & T-T, or 1 #5 sp(E) spiral bar in each of 8 drilled shafts, see Sections S1-S1 & T1-T1. Provide 1/2 extra turns top & bottom. Extend spiral 2 1/2" into footing. Provide a minimum of 4 #4 bar spacers or equivalent.

Permanent Sheet Piling
Elev. 597.00
13'-0" Limits of Drilled Shaft in Soil (typ.) for 7 Shafts under Stage I Breastwall
3'-0" Limits of Drilled Shaft in Rock Typ.
20 #10 n22(E) bars @ 6 1/2" cts. each of 7 drilled shafts
Est. Rock Elev. 584.00
1 #5 sp2(E) spiral (typ.) each shaft. Provide 1/2 extra turns top & bottom. Extend spiral 2 1/2" into footing. Provide a minimum of 4 #4 bar spacers or equivalent.



SECTION S-S



SECTION T-T

SECTION N-N

SECTION M-M

FOOTING PLAN WITH TOP REINFORCEMENT

FOOTING PLAN WITH BOTTOM REINFORCEMENT

- Notes:
1. E.E. Denotes Each End.
 2. For Bill of Material, see Sheet 21 of 37.
 3. Drilled Shafts shall be drilled to Elevation 581.00. Quantities and Detailing are for the estimated Elevations shown on the Plans. The actual conditions encountered in each Shaft may differ, and the Drilled Shaft and Reinforcement Quantities shall be adjusted accordingly as directed by the Engineer and paid for at the corresponding Unit Bid Price.
 4. Do not excavate deeper than bottom of footing elevation shown without written permission from Engineer.
 5. For additional Sections M-M and N-N, and for Section R-R, see Sheet 18 of 37.
 6. * One inch thick permanent steel plate or steel sheet piling with minimum S = 1.9 in/foot and maximum total depth (thickness) = 3" to be used as footing form. Payment shall be made as "Permanent Steel Sheet Piling".
 7. ** Permanent Steel Sheet Piling with minimum S = 6.10 in/foot to be used as footing form.

REVISIONS	
NAME	DATE

ILLINOIS DEPARTMENT OF TRANSPORTATION
US RTE 6 FROM I-294 TO IL RTE 1
**NORTH ABUTMENT
FOOTING REIN, STAGE I**
METRA & CN BRIDGE 20.6
OVER U.S. RTE. 6 (159TH STREET)
STATION 91+24.94 STRUCTURE NO. 016-2755
SCALE: DATE: 2/21/2008

URS
100 South Wacker Drive,
Suite 500
Chicago, IL 60606
(312) 939-1000

5/17/04 9:09 AM structures\2755_w_r_r\final_design_drwas\17-nabutfootrein-stal.dgn 4:33:51 PM 5/16/2008

DESIGNED	DRS
CHECKED	JJG
DRAWN	SOI
CHECKED	JJG

16 bars @ 12" cts.
Cut from 8 #10
t17(E) bars