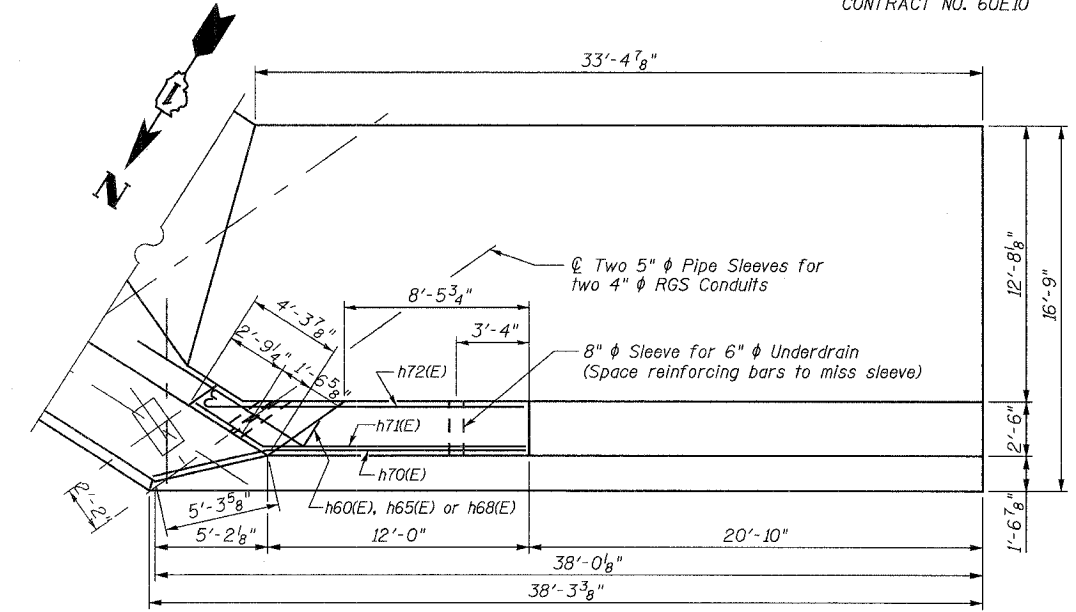
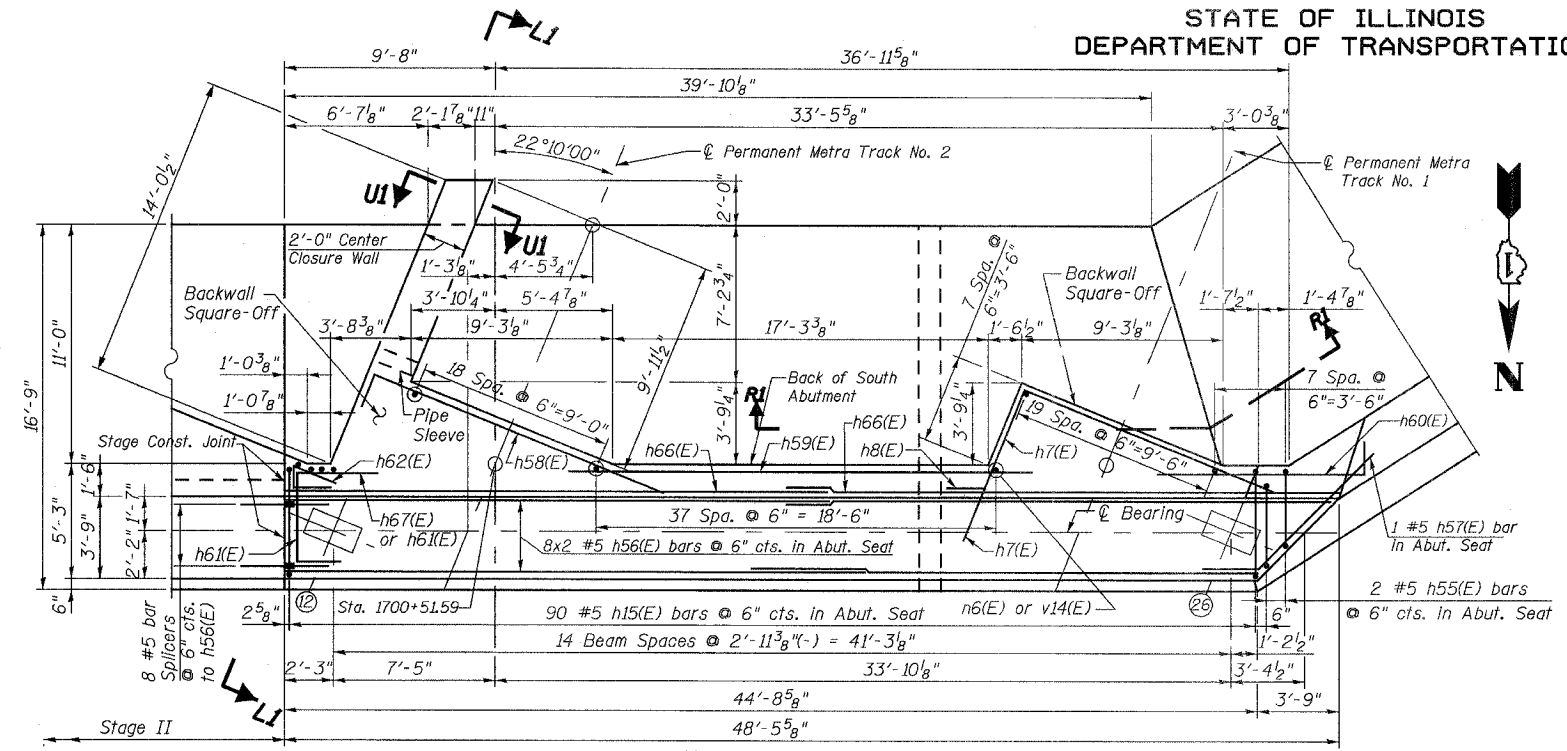


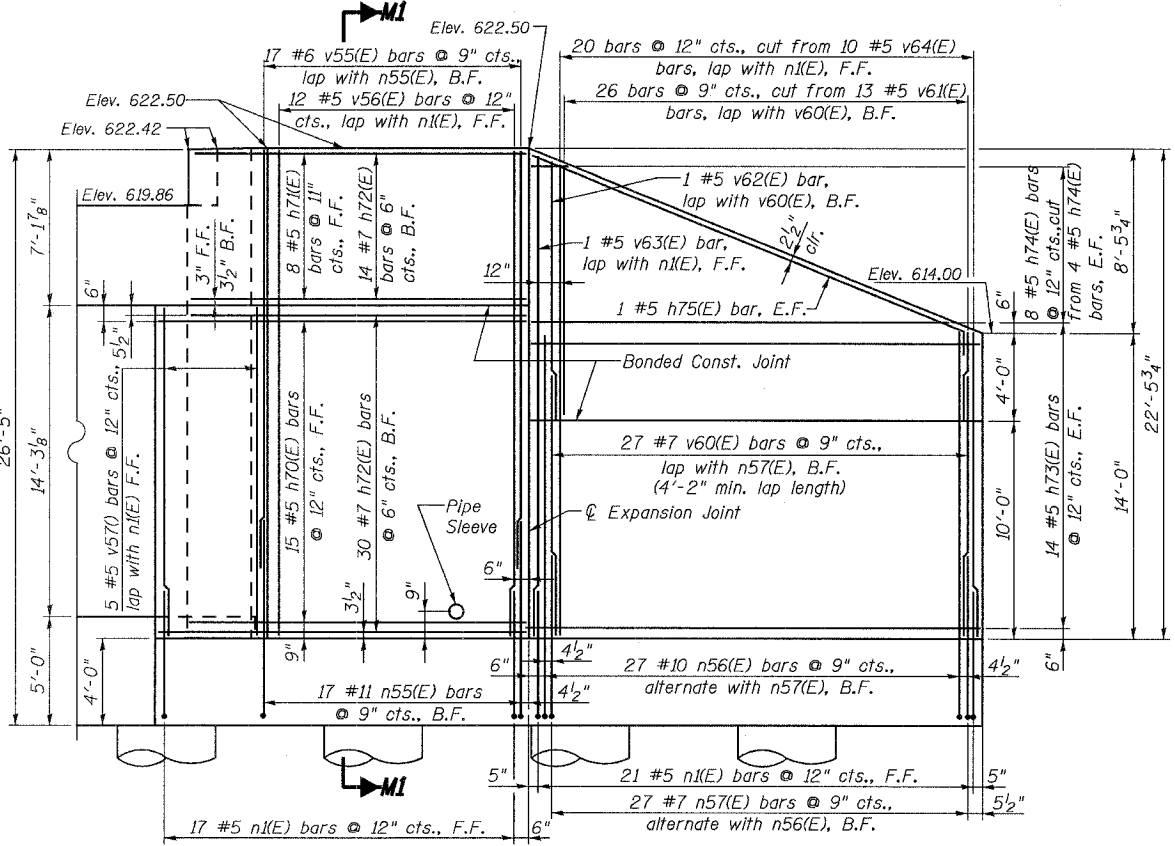
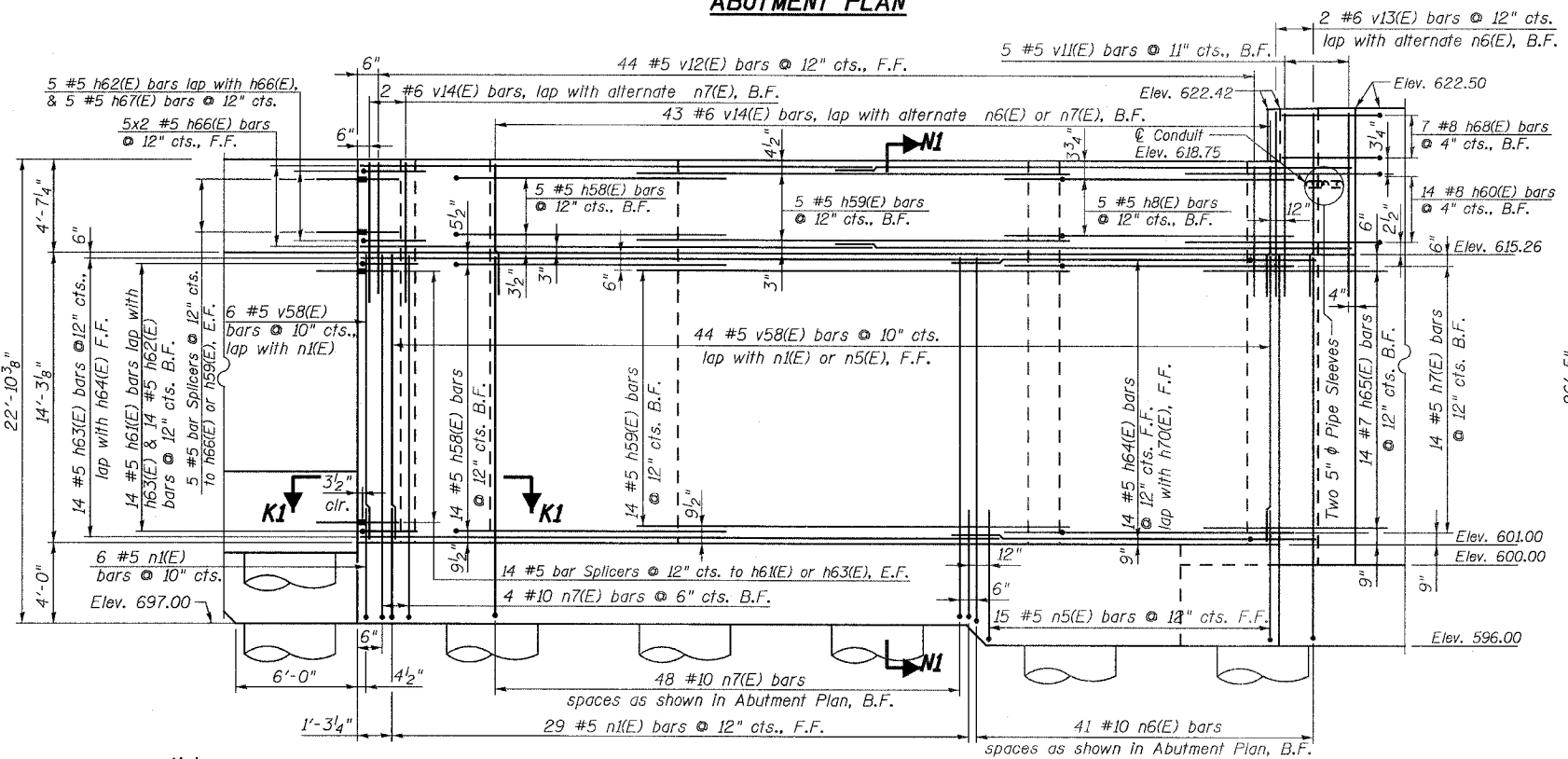
STATE OF ILLINOIS
DEPARTMENT OF TRANSPORTATION

ROUTE NO.	SECTION	COUNTY	TOTAL SHEETS	SHEET NO.
F.A.P. 351	2008-001VB	COOK	579	370
FED. ROAD DIST. NO. 7		ILLINOIS FED. AID PROJECT-		
CONTRACT NO. 60E10				

SHEET NO. 22
37 SHEETS



5/16/2008 4:33:54 PM
C:\17049\069\structures\2755_w.r\final design drawings\22-abut.stg.dwg



- Notes:**
- Ⓢ Denotes Beam Number.
 - For Sections L1-L1, M1-M1, N1-N1, R1-R1, and U1-U1, see Sheet 24 of 37. For Section K1-K1 see Sheet 23 of 37.
 - For additional locations of Sections M1-M1, N1-N1, and R1-R1, see Sheet 23 of 37.
 - Cost of pipe sleeves is included with Concrete Structures. See Walkway Section on Sheet No. 6 of 37 for additional details of 4" φ Conduits.
 - For Permanent Steel Sheet Piling see Sheets 23 and 24 of 37.
 - For 1 1/4" deep recess in backwall below walkway, see Section E-E on Sheet 8 of 37.
 - For plates and angles required for walkway joints, see Section B-B on Sheet 8 of 37.
 - For plates and angles required for deck joints in backwall, see Section P-P on Sheet 7 of 37.
 - For additional reinforcement required in each Backwall Square Off, see Abutment Backwall Square Off Plan on Sheet No. 26 of 37.

DESIGNED	DRS
CHECKED	JJG
DRAWN	DRS/SOI
CHECKED	JJG

URS
100 South Wacker Drive,
Suite 500
Chicago, IL 60606
(312) 939-1000

REVISIONS	
NAME	DATE

ILLINOIS DEPARTMENT OF TRANSPORTATION
US RTE 6 FROM I-294 TO IL RTE 1
**SOUTH ABUTMENT
STAGE I**
METRA & CN BRIDGE 20.6
OVER U.S. RTE. 6 (159TH STREET)
STATION 91+24.94 STRUCTURE NO. 016-2755
SCALE: DATE: 2/21/2008