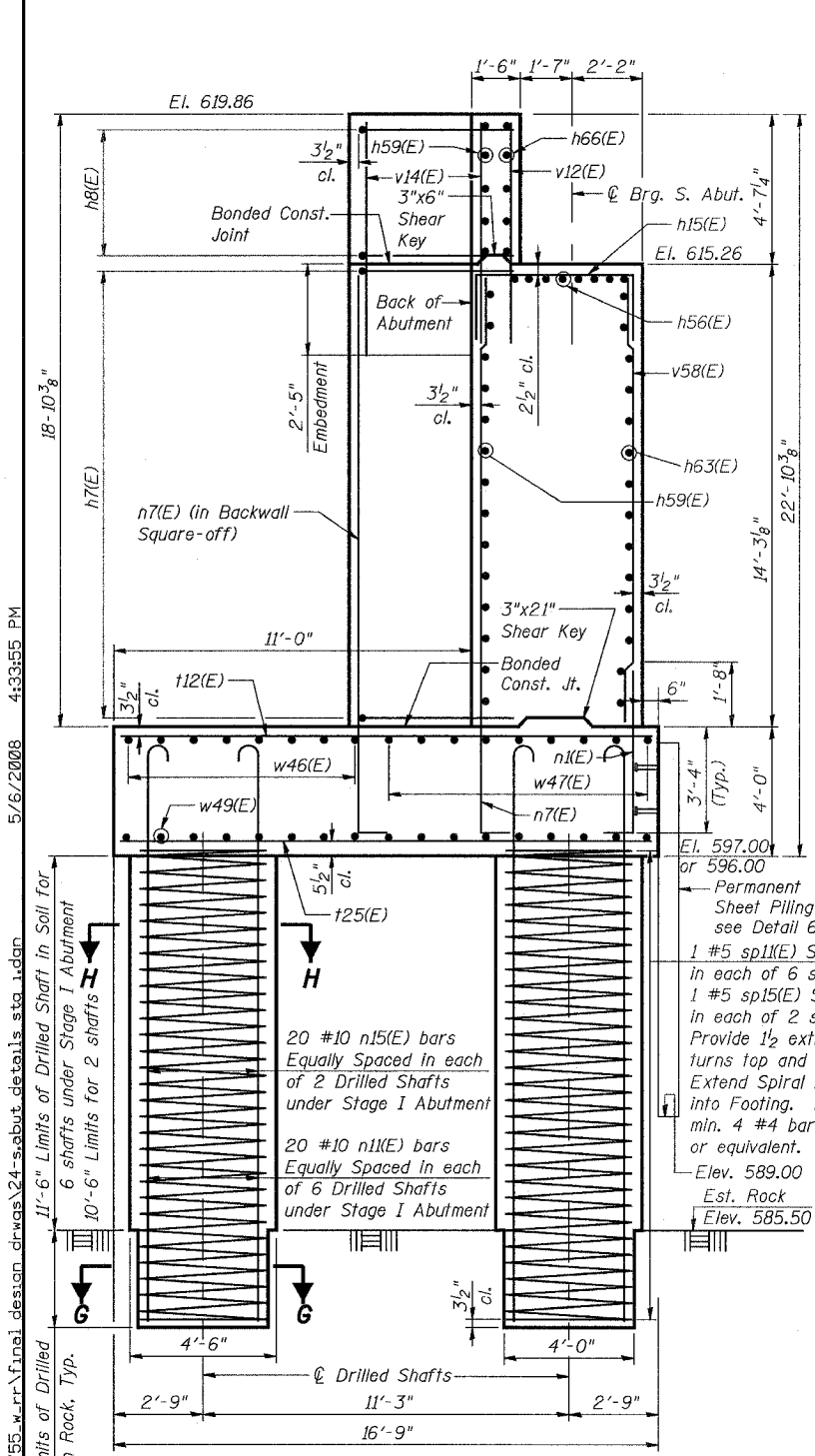


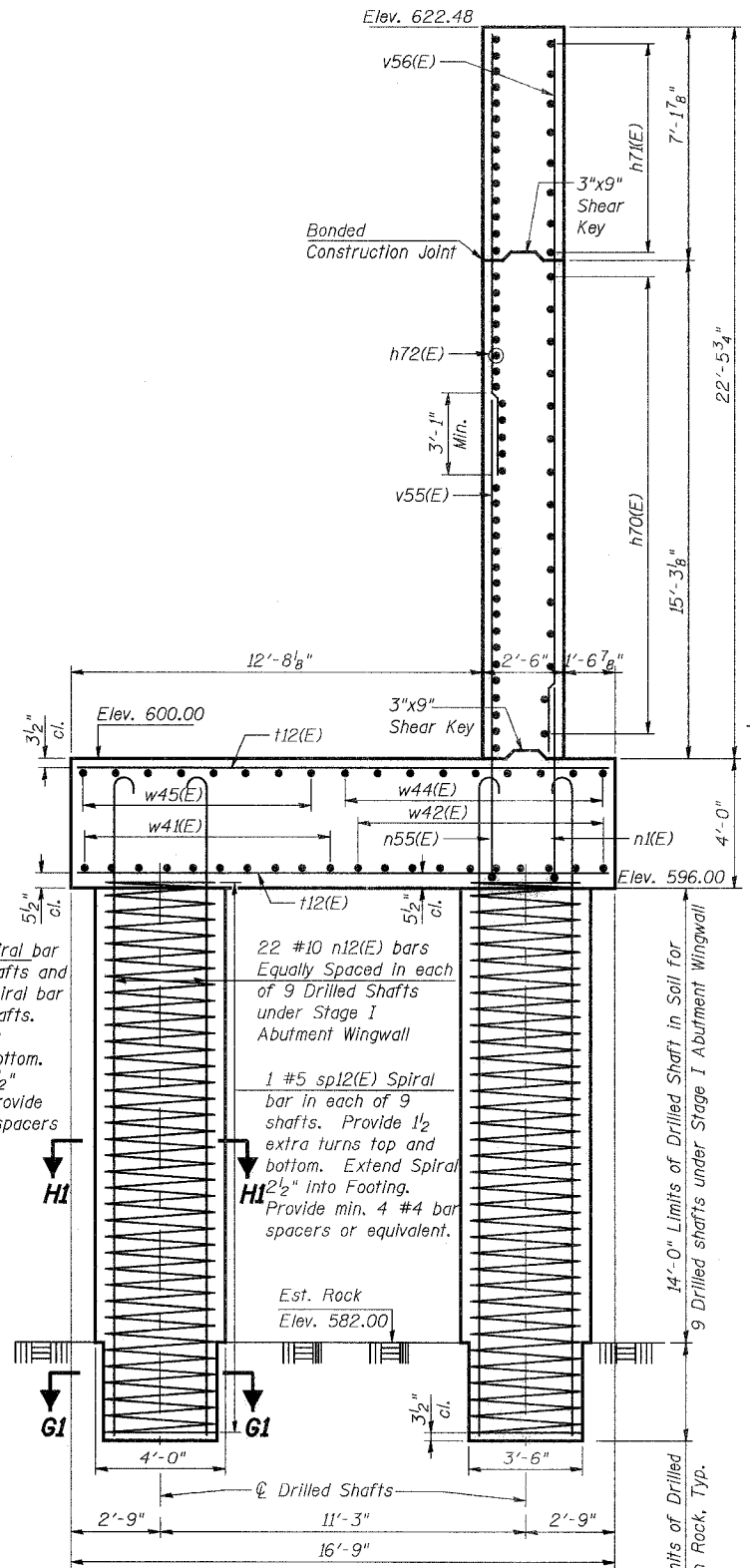
STATE OF ILLINOIS
DEPARTMENT OF TRANSPORTATION

ROUTE NO.	SECTION	COUNTY	TOTAL SHEETS	SHEET NO.
F.A.P. 351	2008-001VB	COOK	579	372
FED. ROAD DIST. NO. 7		ILLINOIS	FED. AID PROJECT-	
CONTRACT NO. 60E10				

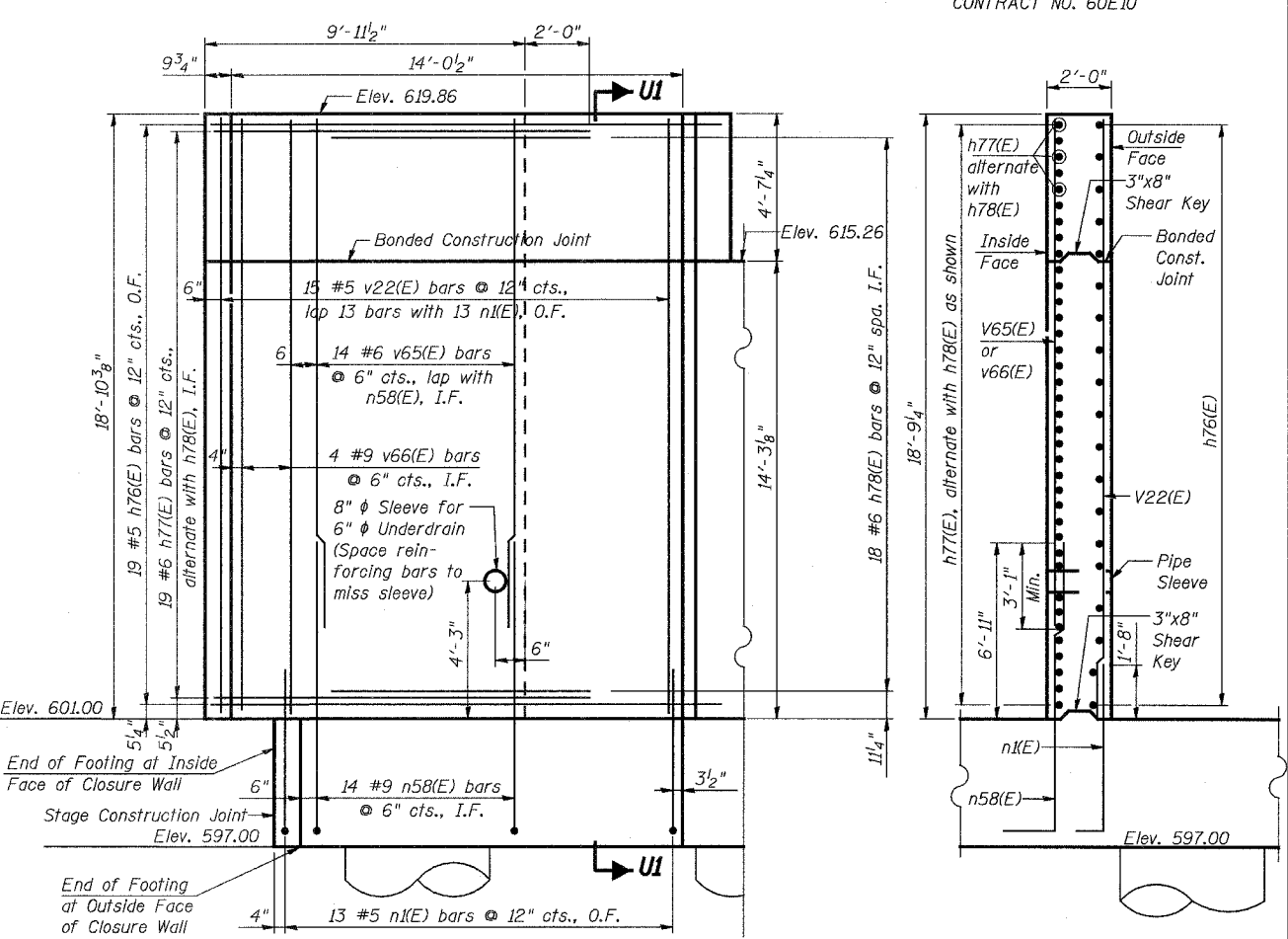
SHEET NO. 24
37 SHEETS



SECTION NI-NI

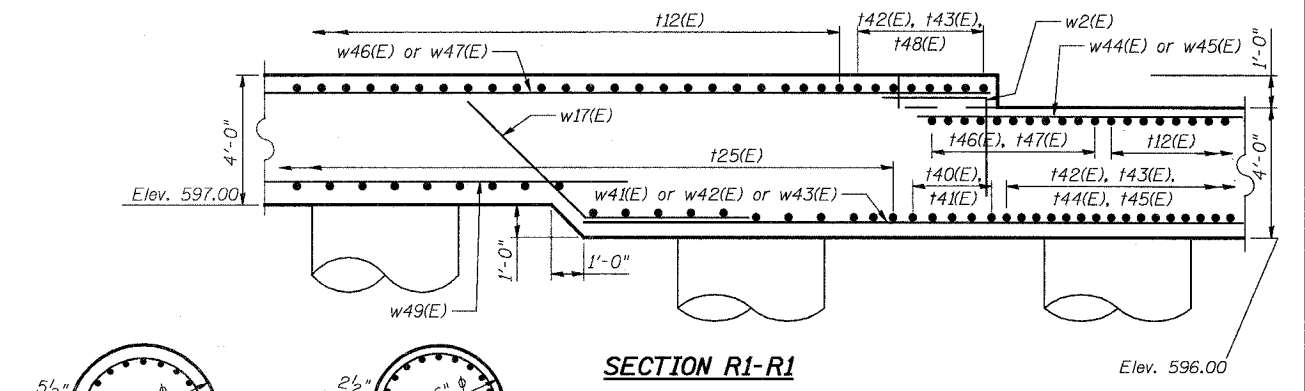


SECTION MI-MI



**SECTION L1-L1
(CENTER CLOSURE WALL ELEVATION)**

SECTION U1-U1



SECTION HI-HI

SECTION GI-GI

5/16/2008 4:33:55 PM
 C:\17049\069\structures\2755_w_r\final_design_dwg\24-s.abut_details_sta.dwg
 3'-0" Limits of Drilled Shaft in Rock, Typ.
 11'-6" Limits of Drilled Shaft in Soil for Stage I Abutment
 10'-6" Limits for 2 shafts
 6 shafts under Stage I Abutment
 20 #10 n15(E) bars Equally Spaced in each of 2 Drilled Shafts under Stage I Abutment
 20 #10 n1(E) bars Equally Spaced in each of 6 Drilled Shafts under Stage I Abutment
 1 #5 sp11(E) Spiral bar in each of 6 shafts and 1 #5 sp15(E) Spiral bar in each of 2 shafts. Provide 1/2 extra turns top and bottom. Extend Spiral 2 1/2" into Footing. Provide min. 4 #4 bar spacers or equivalent. Est. Rock Elev. 589.00
 1 #5 sp12(E) Spiral bar in each of 9 shafts. Provide 1/2 extra turns top and bottom. Extend Spiral 2 1/2" into Footing. Provide min. 4 #4 bar spacers or equivalent. Est. Rock Elev. 582.00
 14'-0" Limits of Drilled Shaft in Soil for Stage I Abutment Wingwall
 9 Drilled shafts under Stage I Abutment Wingwall
 3'-0" Limits of Drilled Shaft in Rock, Typ.

Notes:

1. For locations of Sections MI-MI, NI-NI and R1-R1 see Sheet Nos. 22 and 23 of 37.
2. For location of Section L1-L1 and additional location of Section U1-U1 see Sheet 22 of 37.
3. For Sections H-H and G-G see Sheet 26 of 37.
4. Cost of pipe sleeve is included with Concrete Structures.
5. For Detail 6, see Sheet No. 23 of 37.

DESIGNED	DRS
CHECKED	JJG
DRAWN	SOI
CHECKED	JJG

REVISIONS	
NAME	DATE

ILLINOIS DEPARTMENT OF TRANSPORTATION
US RTE 6 FROM I-294 TO IL RTE 1
**SOUTH ABUTMENT DETAILS
STAGE I**
METRA & CN BRIDGE 20.6
OVER U.S. RTE. 6 (159TH STREET)
STATION 91+24.94 STRUCTURE NO. 016-2755
SCALE: DATE: 2/21/2008

URS
100 South Wacker Drive,
Suite 500
Chicago, IL 60606
(312) 939-1000