

SOUTH ABUTMENT BILL OF MATERIAL

BAR	NO.	NO.	SIZE	LENGTH	SHAPE
STAGE I	STAGES II & III	STAGES II & III			
h7(E)	14		#7	18'-10"	
h8(E)	5	5	#5	18'-6"	
h15(E)	90		#5	8'-8"	
h25(E)		15	#5	9'-3"	
h40(E)		17	#5	33'-3"	
h41(E)		16	#5	34'-6"	
h42(E)		11	#5	15'-6"	
h43(E)		11	#5	19'-3"	
h44(E)		19	#5	11'-6"	
h45(E)		20	#7	27'-7"	
h46(E)		8	#5	5'-7"	
h47(E)		8	#5	11'-5"	
h48(E)		5	#5	15'-11"	
h49(E)		8	#5	32'-10"	
h50(E)		65	#5	8'-8"	
h55(E)	2		#5	7'-8"	
h56(E)	16		#5	25'-0"	
h57(E)	1		#5	10'-0"	
h58(E)	19		#5	15'-2"	
h59(E)	19		#5	21'-3"	
h60(E)	14		#8	10'-4"	
h61(E)	14		#5	10'-6"	
h62(E)	19		#5	5'-10"	
h63(E)	14		#5	30'-0"	
h64(E)	14		#5	18'-5"	
h65(E)	14		#7	9'-0"	
h66(E)	10		#5	25'-2"	
h67(E)	5		#5	4'-10"	
h68(E)	7		#8	7'-0"	
h70(E)	15		#5	17'-2"	
h71(E)	8		#5	15'-10"	
h72(E)	44		#7	15'-7"	
h73(E)	28		#5	20'-4"	
h74(E)	4		#5	20'-7"	
h75(E)	2		#5	23'-10"	
h76(E)	19		#5	15'-0"	
h77(E)	19		#6	12'-2"	
h78(E)	18		#6	8'-6"	
h79(E)		30	#7	8'-6"	
n1(E)	86		#5	6'-0"	
n5(E)	15		#5	7'-0"	
n6(E)	41		#10	20'-0"	
n7(E)	52		#10	19'-0"	
n9(E)		16	#10	13'-10"	
n11(E)	140		#10	19'-4"	
n12(E)	198		#10	21'-10"	
n13(E)		140	#10	22'-10"	
n14(E)		144	#10	25'-4"	
n15(E)	40		#10	18'-4"	
n40(E)	94		#5	6'-0"	
n41(E)	45		#10	14'-1"	
n42(E)	68		#10	15'-6"	
n55(E)	17		#11	16'-6"	
n56(E)	27		#10	19'-2"	
n57(E)	27		#7	9'-8"	
n58(E)	14		#9	12'-0"	
u12(E)	52		#10	16'-1"	
u25(E)	40	36	#6	16'-1"	
u39(E)	53	53	#7	16'-1"	
u40(E)	34	34	#10	13'-4"	
u41(E)	2		#6	16'-8"	
u42(E)	3		#10	16'-3"	
u43(E)	3		#10	16'-5"	
u44(E)	4		#11	16'-7"	
u45(E)	2		#11	16'-9"	
u46(E)	3		#11	14'-11"	
u47(E)	5		#10	10'-0"	
u48(E)	2		#10	16'-8"	
u149(E)	3		#6	11'-3"	
u150(E)	7		#11	16'-5"	
u151(E)	9		#11	16'-3"	
u153(E)	150		#11	16'-1"	
u160(E)		11	#6	11'-3"	
u1(E)	4	4	#5	4'-6"	
u2(E)	4	4	#5	4'-11"	
u3(E)	4	4	#5	5'-4"	
u4(E)	4	4	#5	5'-9"	
u5(E)	4	4	#5	6'-2"	
u6(E)	4	4	#5	6'-7"	
u7(E)	4	4	#5	7'-0"	
u8(E)	4	4	#5	7'-5"	
u9(E)	4	4	#5	7'-9"	
u10(E)	4	4	#5	7'-9"	
u11(E)	4	4	#5	10'-3"	
u12(E)	4	4	#5	12'-8"	
u20(E)		12	#7	8'-0"	
v11(E)	5		#5	9'-2"	
v12(E)	44		#5	6'-5"	
v13(E)	2		#6	9'-7"	
v14(E)	46		#6	6'-10"	
v15(E)		5	#5	10'-4"	
v19(E)		13	#5	14'-11"	
v20(E)		16	#6	9'-4"	
v21(E)		3	#6	14'-11"	
v22(E)	15		#5	18'-5"	
v40(E)		35	#5	16'-7"	
v41(E)		45	#6	11'-3"	
v42(E)		43	#5	10'-5"	
v44(E)		36	#6	6'-11"	
v45(E)		31	#5	6'-6"	
v46(E)		18	#5	9'-3"	
v55(E)	17		#6	19'-1"	
v56(E)	12		#5	22'-3"	
v57(E)	5		#5	15'-0"	
v58(E)	50		#5	14'-0"	
v60(E)	27		#7	12'-2"	
v61(E)	13		#5	11'-6"	
v62(E)	1		#5	7'-10"	
v63(E)	1		#5	22'-1"	
v64(E)	10		#5	35'-7"	
v65(E)	14		#6	16'-1"	
v66(E)	4		#9	18'-5"	
w2(E)	17		#7	8'-6"	
w17(E)	17		#7	8'-10"	
w41(E)	20		#10	21'-6"	
w42(E)	20		#10	23'-6"	
w43(E)	18		#8	13'-2"	
w44(E)	18		#5	21'-0"	
w45(E)	16		#5	19'-7"	
w46(E)	16		#7	22'-8"	
w47(E)	18		#7	24'-0"	
w48(E)		14	#5	33'-2"	
w49(E)	17	27	#7	33'-2"	
w50(E)		34	#7	37'-3"	
w51(E)		12	#7	14'-7"	
sp11(E)	7		#5	14'-5"	
sp12(E)	9		#5	16'-11"	
sp13		7	#5	17'-11"	
sp14		8	#5	20'-5"	
sp15(E)	2		#5	13'-5"	
Porous Granular Embankment			Cu. Yd.	1108	
Structure Excavation			Cu. Yd.	1056	
Non-Special Waste Disposal			Cu. Yd.	1130.6	
Concrete Structures			Cu. Yd.	786.4	
Reinforcement Bars			Lbs.	5710	
Reinforcement Bars, Epoxy Coated			Lbs.	154,370	
Concrete Sealer			Sq. Ft.	295	
Geocomposite Wall Drain			Sq. Ft.	391	
Braced Excavation			Cu. Yd.	1766.8	
Drilled Shaft in Soil			Cu. Yd.	234.3	
Drilled Shaft in Rock			Cu. Yd.	38.3	
Bar Splitters			Each	80	

5/6/2008 4:59:33 PM
 C:\17049.069\structures\2755.v.r\Final design drows\27_sabutte\bill of mat.dgn

DESIGNED	DRS
CHECKED	JJG
DRAWN	SOI
CHECKED	JJG

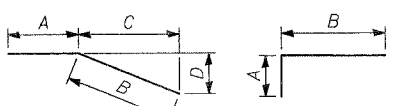
STATE OF ILLINOIS
DEPARTMENT OF TRANSPORTATION

ROUTE NO.	SECTION	COUNTY	TOTAL SHEETS	SHEET NO.
F.A.P. 351	2008-001VB	COOK	579	375
FED. ROAD DIST. NO. 7		ILLINOIS	FED. AID PROJECT-	

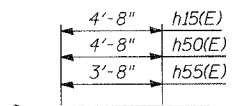
CONTRACT NO. 60E10

BENDING DIMENSIONS

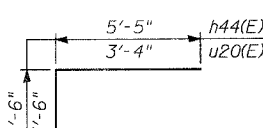
BAR	A	B	C	D
h7(E)	7'-0"	11'-10"		
h42(E)	6'-10"	8'-8"		
h43(E)	6'-10"	12'-5"		
h46(E)	1'-7"	4'-0"	3'-8 ⁵ / ₈ "	1'-5 ⁵ / ₈ "
h57(E)	8'-0"	2'-0"	1'-5"	1'-5"
h58(E)	10"	14'-4"		
h60(E)	1'-4"	9'-0"		
h64(E)	16'-5"	2'-0"	1'-5"	1'-5"
h67(E)	10"	4'-0"		
h70(E)	11'-10"	5'-4"	5'-2 ¹ / ₂ "	1'-1 ¹ / ₈ "
h71(E)	11'-10"	4'-0"	3'-4 ¹ / ₂ "	2'-1 ³ / ₄ "
h75(E)	21'-10"	2'-0"	9'-0"	10 ¹ / ₄ "
n1(E)	10"	5'-2"		
n5(E)	10"	6'-2"		
n6(E)	1'-10"	18'-2"		
n7(E)	1'-10"	17'-2"		
n9(E)	1'-7"	12'-3"		
n40(E)	0'-10"	5'-2"		
n41(E)	1'-10"	12'-3"		
n42(E)	1'-10"	13'-8"		
n55(E)	1'-7"	14'-11"		
n56(E)	1'-10"	17'-4"		
n57(E)	1'-2"	8'-6"		
n58(E)	1'-7"	10'-5"		
w2(E)	4'-3"	4'-3"		
w17(E)	4'-5"	4'-5"	3'-1 ¹ / ₂ "	3'-1 ¹ / ₂ "
w43(E)	9'-5"	3'-9"	3'-2"	2'-0 ¹ / ₂ "
w50(E)	3'-0"	34'-3"		
w51(E)	9'-0"	5'-7"	3'-11 ³ / ₈ "	3'-11 ³ / ₈ "



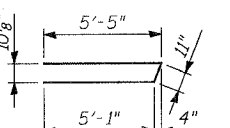
BARS WITH VARIABLE DIMENSIONS



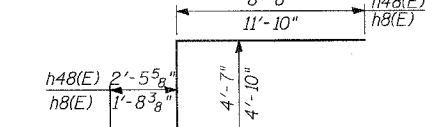
BARS h15(E), h50(E) & h55(E)



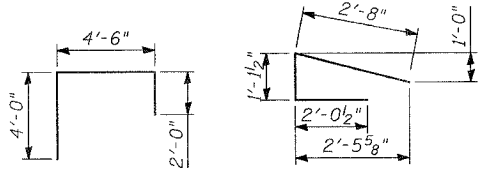
BAR h44(E) & u20(E)



BAR h47(E)



BARS h8(E) & h48(E)



BAR h61(E)

BAR h62(E)

BARS u1(E) To u12(E)

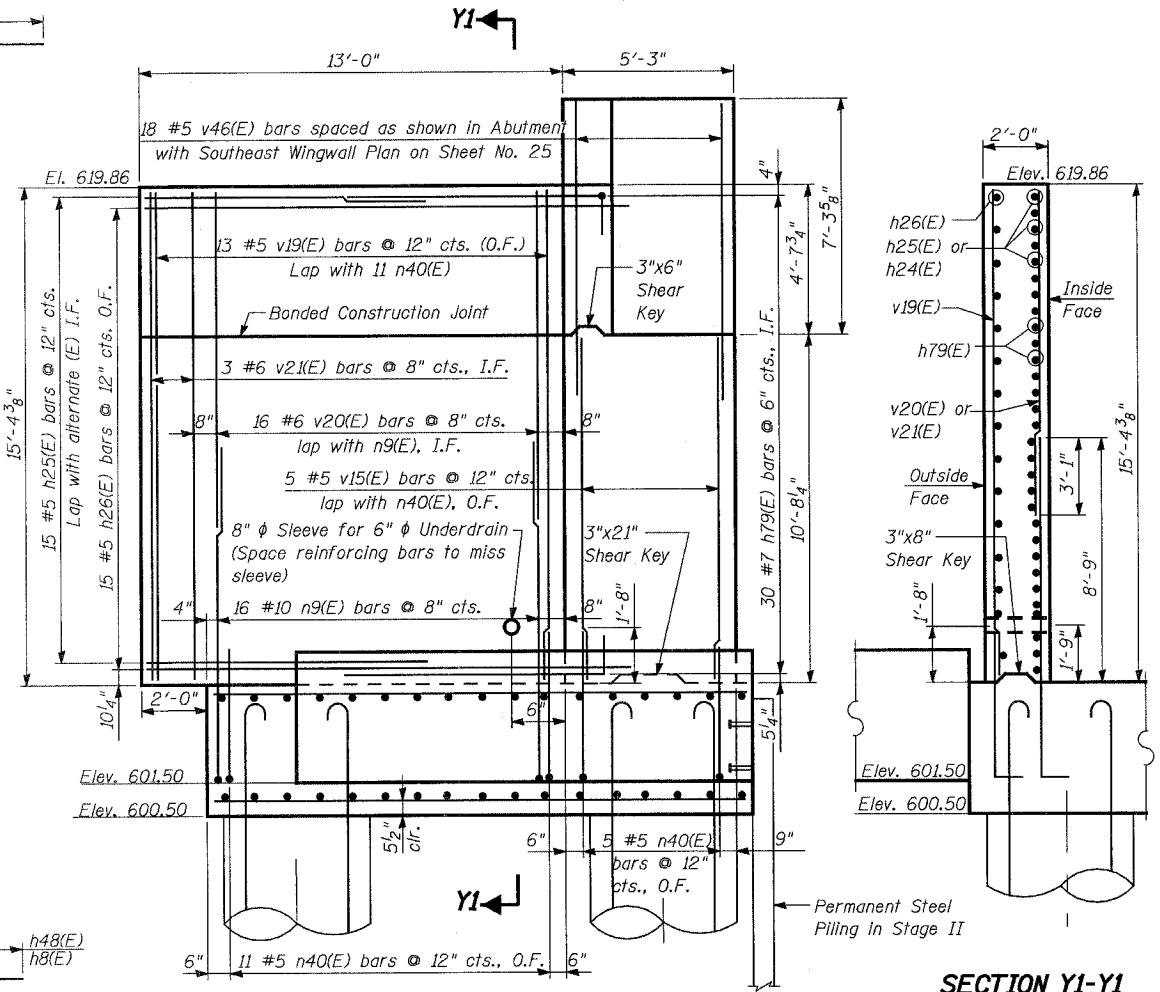
SPIRAL BARS

BENDING DIMENSIONS

BAR	E	F	G
n11(E)	17'-11"	1'-5"	1'-1 ¹ / ₄ "
n12(E)	20'-5"	1'-5"	1'-1 ¹ / ₄ "
n13(E)	21'-5"	1'-5"	1'-1 ¹ / ₄ "
n14(E)	23'-11"	1'-5"	1'-1 ¹ / ₄ "
n15(E)	16'-11"	1'-5"	1'-1 ¹ / ₄ "
h72(E)	14'-9"	0'-10"	0'-7"

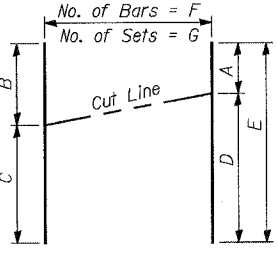
BENDING DIMENSIONS

BAR	H
sp11(E)	3'-7"
sp12(E)	3'-1"
sp13	3'-7"
sp14	2'-7"
sp15(E)	3'-7"
u1(E)	1'-2"
u2(E)	1'-7"
u3(E)	2'-0"
u4(E)	2'-5"
u5(E)	2'-10"
u6(E)	3'-3"
u7(E)	3'-8"
u8(E)	4'-1"
u9(E)	4'-5"
u10(E)	4'-5"
u11(E)	6'-11"
u12(E)	9'-4"



SECTION X1-X1

SECTION Y1-Y1



CUTTING DIAGRAM

CUTTING DIAGRAM DIMENSIONS

BAR	A	B	C	D	E	F	G
h74(E)	1'-8"	9'-0 ³ / ₄ "	11'-6 ¹ / ₄ "	18'-11"	20'-7"	4	2
h46(E)	6'-8"	7'-3"	7'-7 ³ / ₈ "	8'-3"	14'-11"	3	1
v61(E)	3'-11"	5'-7 ¹ / ₈ "	5'-10 ¹ / ₈ "	7'-7"	11'-6"	13	1
v64(E)	13'-11"	17'-7"	18'-0"	21'-8"	35'-7"	10	1

NOTES:

- Cost of pipe sleeve is included with Concrete Structures.
- For locations of X1-X1 and Y1-Y1, see Sheet Nos. 25 and 26 of 37.
- Length of spiral given is height of spiral.

REVISIONS	NAME	DATE

ILLINOIS DEPARTMENT OF TRANSPORTATION
US RTE 6 FROM I-294 TO IL RTE 1

SOUTH ABUTMENT DETAILS AND BILL OF MATERIAL

METRA & CN BRIDGE 20.6
OVER U.S. RTE. 6 (159TH STREET)

STATION 91+24.94 STRUCTURE NO. 016-2755
SCALE: DATE: 2/21/2008

URS
100 South Wacker Drive,
Suite 500
Chicago, IL 60606
(312) 939-1000